

Addendum (6VZA)

There is a typing error on page 8,14,15,16 of the quick start guide. Please refer to this addendum for correct content.

Step 3. Configure Memory

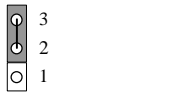
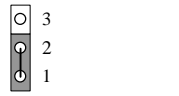
Your board comes with three DIMM sockets, providing support for up to 256MB of main memory using DIMM modules from 8MB to 128MB.

Memory Configuration Table

Number of Memory Modules	DIMM 1	DIMM 2	DIMM 3
1	Double-sided/Single-sided	Double-sided	
2	Double-sided/Single-sided		Double-sided
3	Double-sided/Single-sided	Single-sided	Single-sided
RAM Type		SDRAM	
Memory Module Size (MB)		8/16/32/64/128 Mbytes	
Note: Because DIMM banks 2 and 3 are shared, double-sided DIMMs (having ICs on both sides of the module) can be used in only one of the banks. With single-sided DIMM both bank 2 and 3 can be used.			

Step 4. Set JP45 for power up FSB clock and AGP bus clock.

JP45 is used to adjust AGP bus clock frequency depending on the value of the front side bus (FSB) clock, also the setting of the JP45 determines the power up FSB clock which will remain effective until the BIOS set the FSB clock to the CMOS setting.

JP45 Setting		
Power up FSB Clock	66MHz	100MHz
AGP Clock	AGP Clock = FSB Clock ÷ 1	AGP Clock = FSB Clock ÷ 1.5

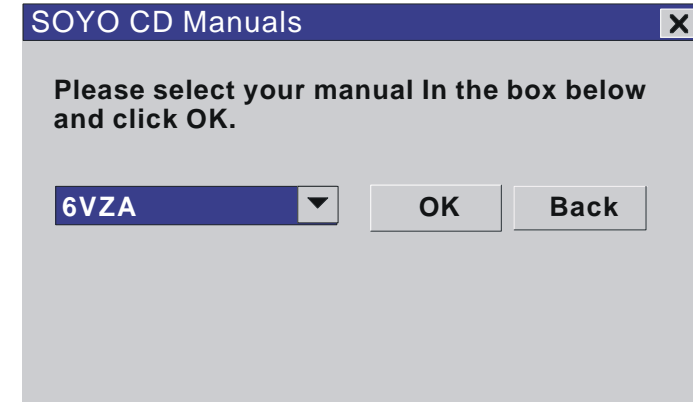
Note: The specification of maximum AGP bus Clock frequency is 66.6MHz.

- * Set JP45 to pin 1-2 short when you use a FSB 100MHz CPU.
- * Set JP45 to pin 2-3 short when you use a FSB 66MHz CPU.
- * Set JP45 to pin 1-2 short when you use a FSB 66MHz but want to over clock the FSB clock to 100MHz via the BIOS setting.

Step 5. Set the CPU Frequency

This Motherboard does not use any jumpers to set the CPU frequency; CPU setting are changed through the BIOS [SOYO COMBO SETUP]. Refer to Chapter 3 "Quick BIOS Setup" for details on how to set the Celeron™ processor frequency

Please note that if the Start Up program was unable to determine which SOYO Motherboard you own, the manual selection menu will pop up, as shown below. Then select the user's manual file that corresponds to your Motherboard model name and click OK.



(Manual Selection Menu)

The user's manual files included on the SOYO CD can be read in PDF (Postscript Document) format. In order to read a PDF file, the appropriate Acrobat Reader software must be installed in your system.

Note: The Start Up program automatically detects if the Acrobat Reader utility is already present in your system, and otherwise prompts you on whether or not you want to install it. You must install the Acrobat Reader utility to be able to read the user's manual file. Follow the instructions on your screen during installation, then once the installation is completed, restart your system and re-run the SOYO CD.

Step 6. Install Drivers and Utilities

The following describes the best way of installing Windows 95 or Windows 98 on your SY-6VZA Motherboard:

➤ The following BIOS default settings should not be changed:

1. The 'OnChip USB Controller' item under 'Chipset features Setup' is set to enabled.
2. The 'USB Assigned IRQ' item under 'PnP/PCI Configuration' is set to enabled.

You MUST have these two items enabled for Windows 95/98 to run properly on your system.

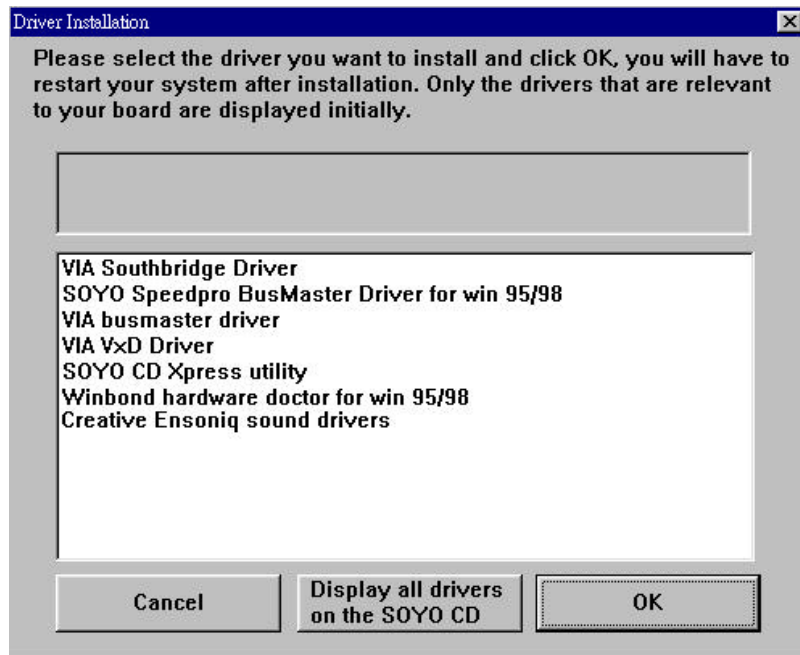
- Install Windows 95/98
- If you installed Windows 95 you will now need to upgrade your USB driver by running

the following program on your Windows CD:

Win95/OSR2/Usbsupp/USBSupp.exe

- After installation of windows, you will need to install the VIA drivers. Follow the instruction below.

Click the **Enter SOYO CD** button to display the list of drivers that can be installed on your Motherboard. The start-up program displays the drivers available for the SY-6VZA and the Windows version you use. (Picture shows Windows 95 drivers)



(Driver Installation Menu)

A short description of all available drivers follows:

- **VIA IRQ remapping utility**

This utility will remap the IRQ's in the Apollo Pro chipset. For Windows 98 only.

- **VIA Southbridge Driver**

This utility will help Windows recognize your PCI bridge. This driver will be displayed only under Windows 95. For Windows 98 this driver does not need to be installed.

- **SOYO SpeedPro Busmaster Driver for Win 95/98**

Without the busmaster drivers the CPU will need to be involved every time data is read from or written to the Harddisk. The busmaster drivers make use of DMA (Direct Memory Access) to relieve the CPU of this burden, thus speeding up the system.

The SOYO SpeedPro driver makes use of an advanced caching algorithm, which gives it an advantage over other busmaster drivers.

Note: If you install the SOYO SpeedPro Busmaster driver for Windows 95/98, you can NOT install the VIA Bus Master drivers.

- **VIA Bus Master Driver**

This is the VIA busmaster driver for Windows 95/98. Only install ONE type of busmaster driver, and make sure to uninstall your previous busmaster driver first..

- **VIA VxD Driver**

This is the VXD driver for the AGP port in your Apollo Pro chipset.

- **SOYO CD Xpress Utility**

This utility will enhance your CD-ROM Drive data-throughput by using space on the Harddisk as cache. This way application programs can access data faster. This utility is suitable for Windows 95/98.

- **Winbond hardware doctor for Windows xx**

Your motherboard comes with a hardware monitoring IC. By installing this utility Temperature, Fan speed and Voltages can be monitored. It is also possible to set alarms when current system values exceed or fall below pre-set values.

- **Creative Ensoniq Sound Drivers**

These drivers have to be installed if the user wants to make use of the on-board Creative Soundchip.

Select which driver you want to install and click **OK**, or click **Cancel** to return to the main menu. When the installation program of a driver starts running the SOYO-CD will exit. After finishing the installation, restart the SOYO-CD and install the next driver. We recommend you to install all drivers, and to do so in the right sequence (top to bottom).

Note: Once you have selected a driver, the system will automatically exit the SOYO CD to begin the driver installation program. When the installation is complete, most drivers require to restart your system before they can become active.



Install the drivers in sequence, starting with the VIA IRQ remapping utility..

If you want to see all the drivers available on the SOYO -CD, click the **Display all drivers on the SOYO CD** button. Do NOT install drivers that are not suitable for you board, otherwise your system may crash.