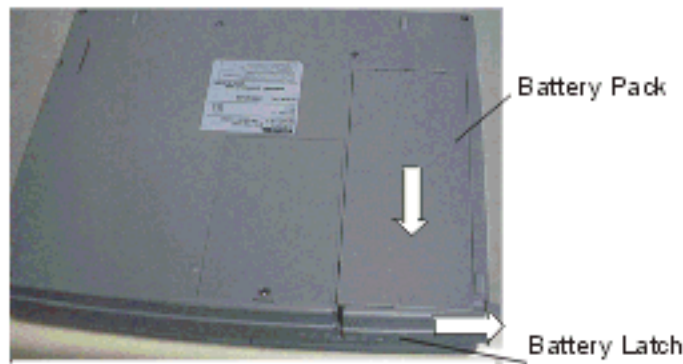


FIELD REPLACEABLE UNIT DOCUMENTATION

Satellite™

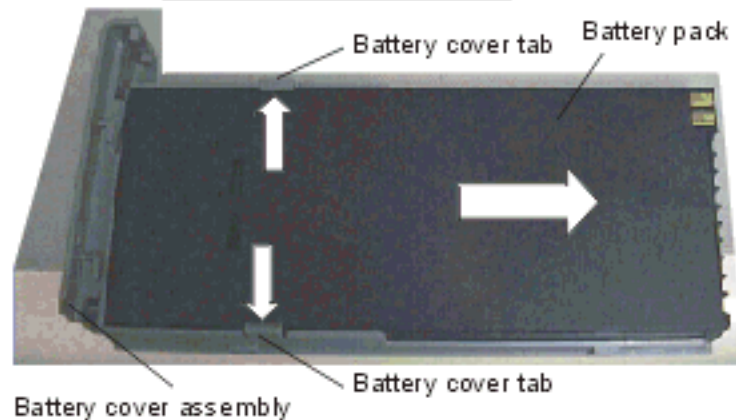
300/310/320/330 Series

BATTERY PACK REMOVAL



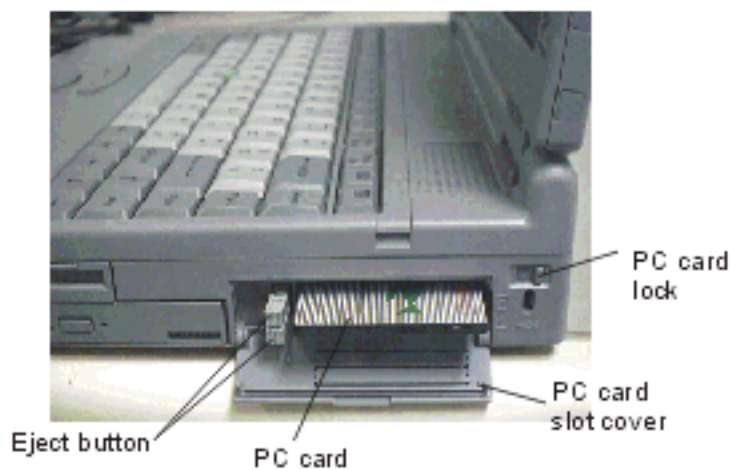
1. Turn the computer upside down as shown.
2. Slide the battery latch in the direction of the arrow to release it.
3. Pull the battery pack slightly forward and lift out the battery pack.

BATTERY REMOVAL



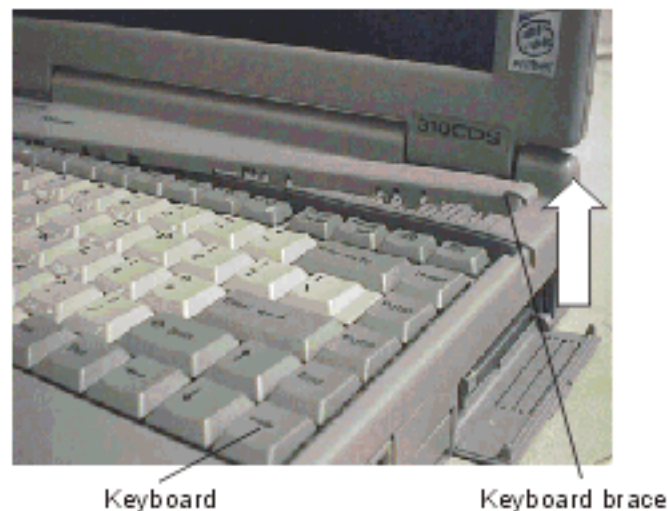
1. Push two tabs on battery cover ass'y. outwards and remove the battery pack in the direction of the arrow.

OPTIONAL PCMCIA CARD REMOVAL



1. Open the PC card slot cover.
2. Slide the PC card lock to the unlock position.
3. Pull out the eject button next to the PC card you want to remove and press the button to pop the PC card out slightly.
4. Grasp the PC card and remove it.

KEYBOARD REMOVAL



1. Open the display panel.
2. Lift out the Keyboard brace.

TOSHIBA

Tough Enough for Today's World.

FIELD REPLACEABLE UNIT DOCUMENTATION

Satellite™

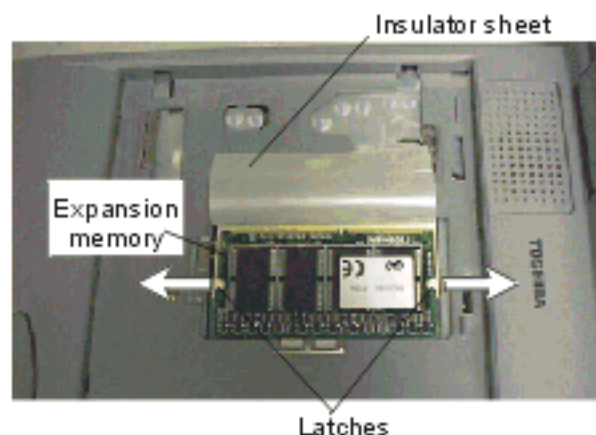
300/310/320/330 Series

KEYBOARD REMOVAL



1. Rotate the keyboard out and lay it face down on the palm rest. Be careful not to apply pressure to the keyboard cable.
2. Disconnect the keyboard cable from P J10 on the system board and remove the keyboard.

EXPANSION MEMORY REMOVAL



1. Lift up the insulator sheet covering the expansion memory. Make sure the computer is in boot mode.
2. Gently press out the latches and the expansion memory will pop up.
3. Grasp the expansion memory and pull it out.

HDD REMOVAL



1. Turn the computer upside down.
2. Remove one M2.5x25 silver screw.
3. Lift off the HDD slot cover.



1. Grasp the HDD bracket and pull it forward to disconnect the HDD, then grasp the back end of the bracket and lift it out.
2. Remove four flat-head screws from the HDD bracket and lift out the HDD.

TOSHIBA

Tough Enough for Today's World.

FIELD REPLACEABLE UNIT DOCUMENTATION

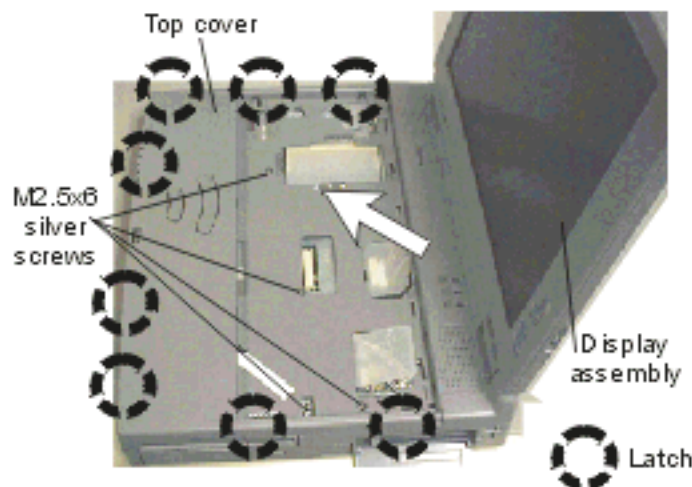
Satellite™

300/310/320/330 Series

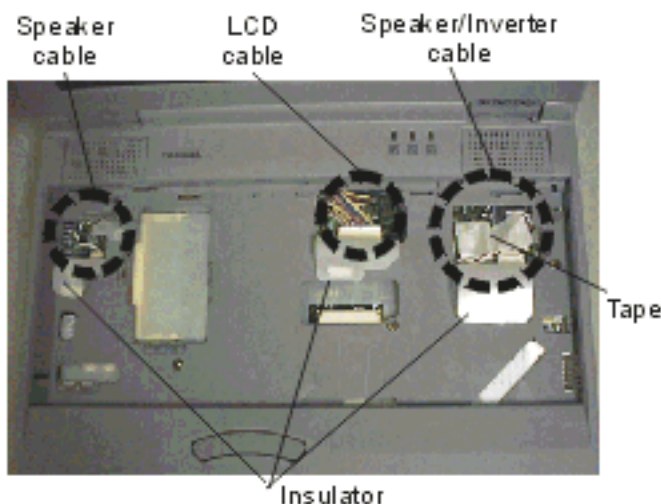
TOP COVER REMOVAL



1. Turn the computer upside down and remove two M2.5x6 silver screws from the battery slot, one M2.5x6 silver screw from the HDD slot, five M2.5x25 silver screws from the bottom cover and two M2.5x6 silver screws from the back of the computer.
2. Turn the computer right side up and open the display.

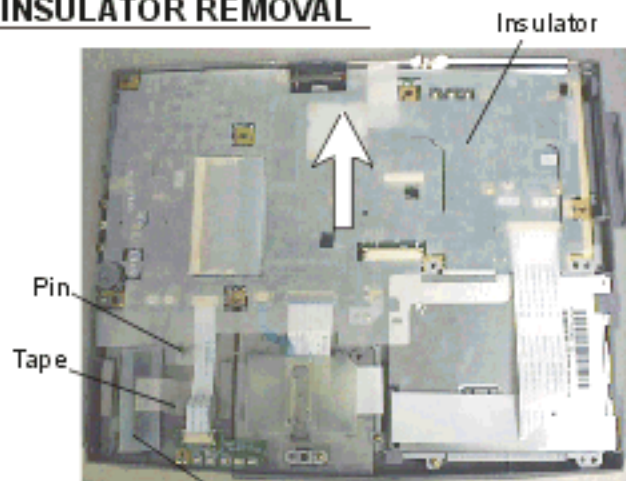


1. Remove four M2.5x6 brass screws securing the top cover.
2. Release eight latches securing the top cover and display assembly: three latches on the left side, three latches on the front and two latches on the right side.
3. Lift off the top cover and display assembly in the direction of the arrow.



1. Lift up the insulator covering four cables and disconnect them: left speaker cable from PJ21, right speaker cable from PJ22, FL cable from PJ4 and LCD cable from PJ3 (DSTN) or PJ23 (TFT) models.
NOTE: Keep tape covering Speaker/Inverter cables for assembly.

INSULATOR REMOVAL



1. Lift out the insulator over the positioning pin.
NOTE: Be sure to reinstall the insulator when assembling the unit. If the insulator is not installed the unit will not power ON.

TOSHIBA

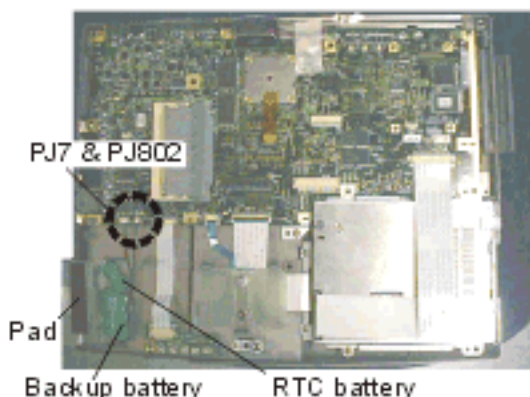
Tough Enough for Today's World.

FIELD REPLACEABLE UNIT DOCUMENTATION

Satellite™

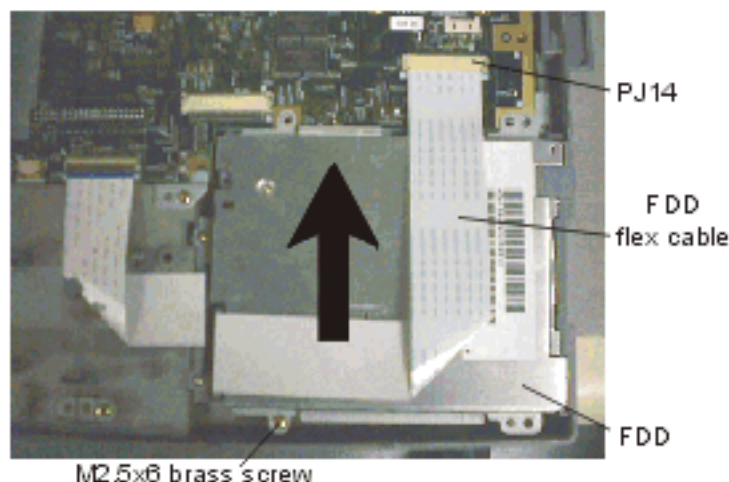
300/310/320/330 Series

RTC and BACKUP BATTERY REMOVAL



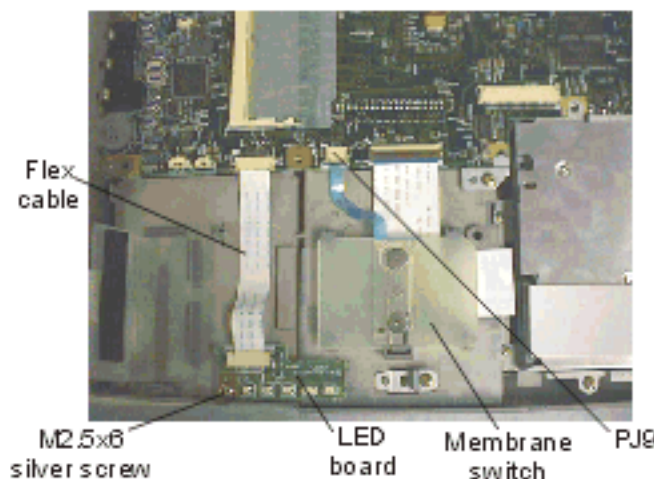
1. Remove the tape securing a pad over the RTC and backup batteries.
2. Disconnect the RTC battery cable from PJ7 on the system board.
3. Disconnect the backup battery from PJ802 on the system board.
4. Lift out the RTC and backup battery.

FDD REMOVAL



1. Disconnect the FDD flexible cable from PJ14 on the system board.
2. Remove one M2.5x6 brass screw securing the FDD and remove the FDD.
3. Remove four flat-head screws securing the FDD to the FDD case and separate the FDD from its case.
4. Disconnect the FDD flexible cable from the FDD.

LED BOARD and MEMBRANE SWITCH REMOVAL



1. Disconnect the LED board flexible cable from the LED board.
2. Remove one M2.5x6 silver screw.
3. Lift up the left side of the LED board to clear a latch on the right side to remove the board.
4. Disconnect the membrane switch cable from PJ9 on the system board.
5. Release one latch at the front edge of the membrane switch and lift out the membrane switch.

NOTE: The FDD, flexible cable and FDD bracket are all separate parts. Please DO NOT send the defective FDD with the flexible cable and bracket to TOSHIBA. The four screws, flexible cable and the FDD brackets should be kept to assemble the FDD you receive from TOSHIBA for the customer's unit.

TOSHIBA

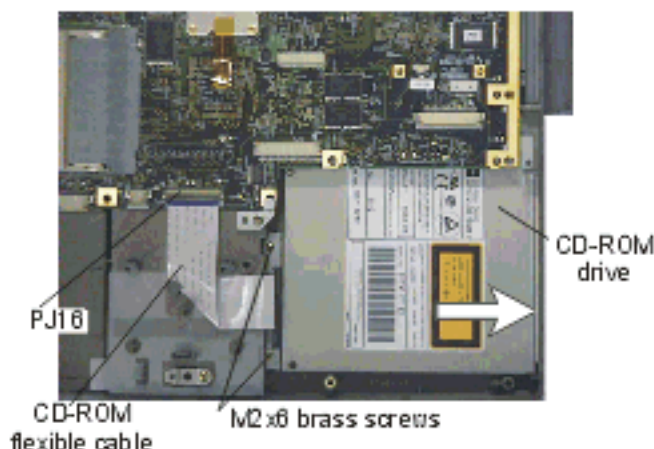
Tough Enough for Today's World.

FIELD REPLACEABLE UNIT DOCUMENTATION

Satellite™

300/310/320/330 Series

CD-ROM DRIVE REMOVAL

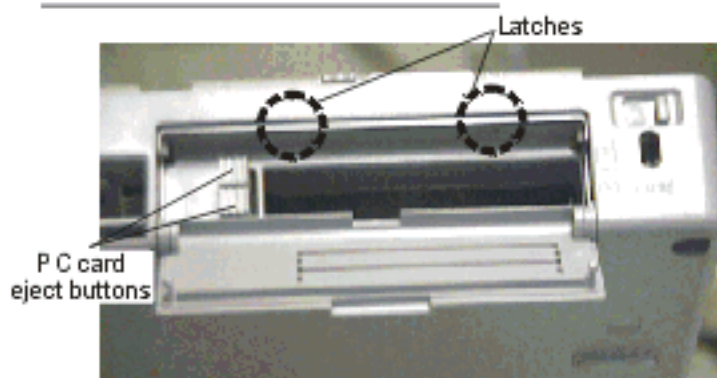


1. Disconnect the CD-ROM flexible cable from PJ16 on the system board.
2. Remove two M2x6 brass screws securing the CD-ROM drive.
3. Slide out the CD-ROM drive in the direction of the arrow.

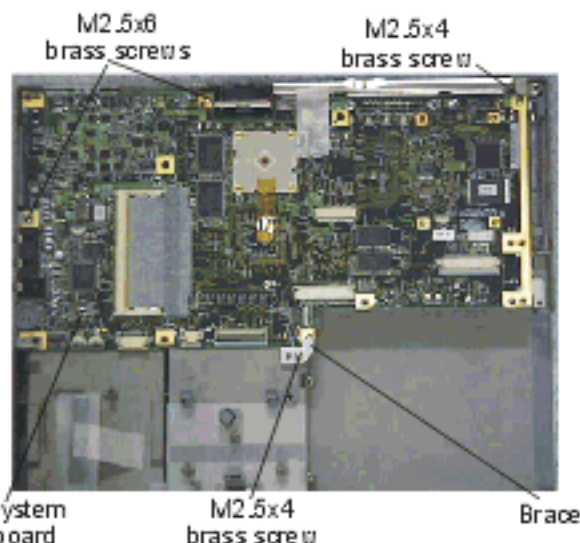
NOTE: The CD-ROM, flexible cable and bracket are all separate parts. Please DO NOT send the defective CD-ROM, flexible cable and bracket to TOSHIBA. The two screws, flexible cable and the CD-ROM brackets should be kept to assemble the CD-ROM you receive from TOSHIBA for the customer's unit.

CAUTION: When you lock PJ008 on the CD-ROM connector and PJ16 on the system board, push both sides of the connector lever at the same time. If you push the center of the lever, the cable can become disconnected easily or the connector broken.

SYSTEM BOARD REMOVAL



1. You will first remove the PC card slot cover. Pull out the PC card eject buttons and push them in fully; do not bend them.
2. Insert tweezers between the top of the PC card slot cover and the bottom cover of the computer to release two latches.
3. Pull the top of the PC card slot cover forward to remove it. Two internal latches prevent the card from being pulled straight out, so rotate the top.



1. Remove two M2.5x4 brass screws. One securing the system board directly and the other securing a small brace on the corner of the system board. Lift out the brace with the screw.
2. Remove two M2.5x6 brass screws securing the system board.
3. Lift up the left side of the system board about 5 cm and pull it out from the left side to avoid damaging the PC card eject buttons.

TOSHIBA

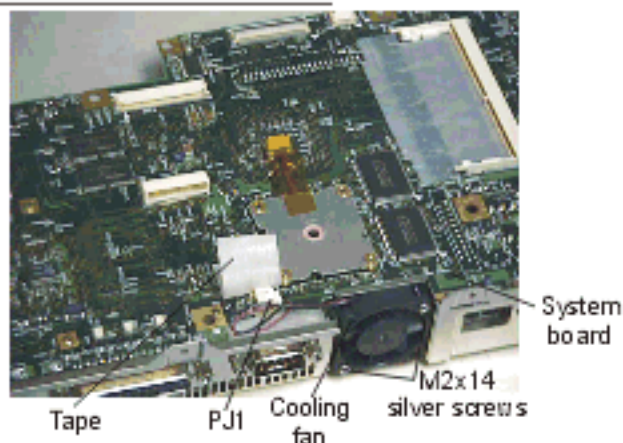
Tough Enough for Today's World.

FIELD REPLACEABLE UNIT DOCUMENTATION

Satellite™

300/310/320/330 Series

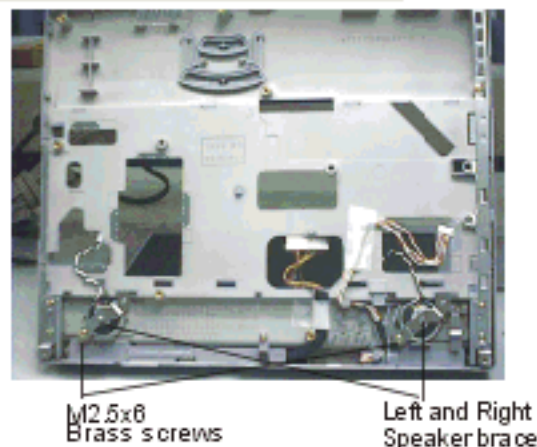
COOLING FAN REMOVAL



1. Remove Tape covering PJ1 and the fan cable.
2. Disconnect the fan cable from PJ1 on the system board.
3. Remove two M2x14 screws securing the cooling fan.
4. Lift out the cooling fan from the system board.

NOTE: The cooling fan and system board are separate parts. Please DO NOT send the fan to TOSHIBA with defective system boards. The fan and two screws should be kept to be attached to the system board you receive from TOSHIBA for the customer's unit.

REMOVING THE SPEAKERS



1. Remove one M2.5x6 screws securing each speaker brace.
2. Remove each brace and lift out the speaker.

TOSHIBA

Tough Enough for Today's World.

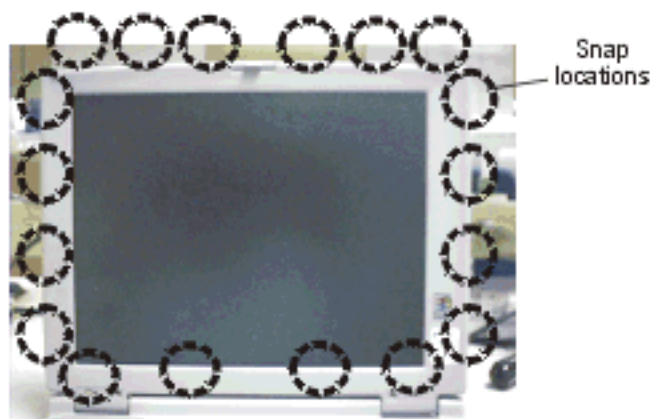
Satellite™

300/310/320/330 Series

DISPLAY MASK



1. Remove mask seal and name seal at the hinges to expose two M2.5x6 brass screws securing the display mask.
2. Remove the two M2.5x6 brass screws that were covered by the seals.
3. A total of 18 snaps secure the display mask. Carefully insert your fingers between the mask and the LCD panel and pry open the snaps. Start with six snaps across the top of the display mask.



4. Continue unsnapping the mask along the sides (4 snaps on each side), at the bottom (2 snaps) and at the hinges (2 snaps).

TOSHIBA

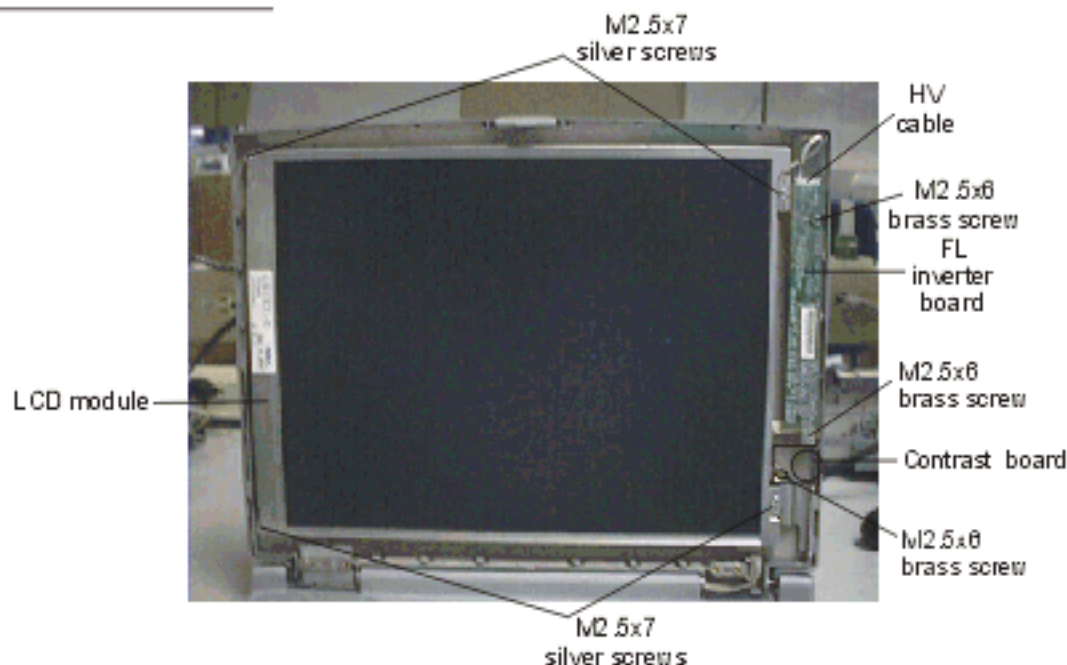
Tough Enough for Today's World.

FIELD REPLACEABLE UNIT DOCUMENTATION

Satellite™

300/310/320/330 Series

FL INVERTER and SCREEN



1. Remove two M2.5x6 brass screws securing the FL inverter board.
2. Carefully rotate the FL inverter board out; from right to left then disconnect the FL inverter cable from CN1 and the HV cable from CN2.
3. Remove one M2.5x4 brass screw securing the contrast board. ON CDS MODELS ONLY!
4. Disconnect the contrast board cable from PJ1 on the contrast board and lift out the board.
5. Remove four M2.5x7 silver screws securing the LCD module to the LCD cover.
6. Carefully rotate the LCD module from right to left of the LCD cover.
7. Disconnect the LCD cable from the LCD module and remove the LCD from the computer.

TOSHIBA

Tough Enough for Today's World.