

Replacing the Solo 1400/1450 Keyboard

This package includes a replacement keyboard for your Solo 1400 or Solo 1450 notebook and these printed instructions.

Tools you need

You need a small Phillips and flat blade screwdriver to replace the keyboard.

Preventing static electricity discharge

The components inside your computer are extremely sensitive to static electricity, also known as *electrostatic discharge* (ESD).

Caution



ESD can permanently damage electrostatic discharge-sensitive components in the computer. Prevent ESD damage by following ESD guidelines every time you open the computer case.

Warning



To avoid exposure to dangerous electrical voltages and moving parts, turn off your computer and unplug the power cord and modem and network cables before opening the case.

Before replacing the keyboard, follow these guidelines:

- Turn off the computer power.
- Wear a grounding wrist strap (available at most electronics stores) and attach it to a bare metal part of the computer.

Warning



To prevent risk of electric shock, do not insert any object into the vent holes of the notebook.

- Touch a bare metal surface on the back of the computer.
- Unplug the power cord and modem and network cables.
- Remove the battery.

Thank you for purchasing this Factory Service Manual CD/DVD from servicemanuals4u.com.

Please check out our eBay auctions for more great deals on Factory Service Manuals:

servicemanuals4u

Before working with computer components, follow these guidelines:

- Avoid static-causing surfaces such as carpeted floors, plastic, and packing foam.
- Remove components from their antistatic bags only when you are ready to use them. Do not lay components on the outside of antistatic bags because only the inside of the bags provide electrostatic protection.

Removing the keyboard



To remove the keyboard:

- 1 Follow the guidelines under “Preventing static electricity discharge” on page 1.
- 2 Shut down your notebook.
- 3 Unplug the AC adapter and modem and network cables.

Warning



To avoid injury, disconnect the AC adapter and modem and network cables before removing the keyboard. Replace the keyboard before reconnecting power.

- 4 Remove the battery.
- 5 Open the LCD panel to the normal viewing position.

- 6 Insert a small flat blade screwdriver under the bottom-right corner of the keyboard bezel, between the **INS** and **DEL** keys, and gently pry it up.

Important



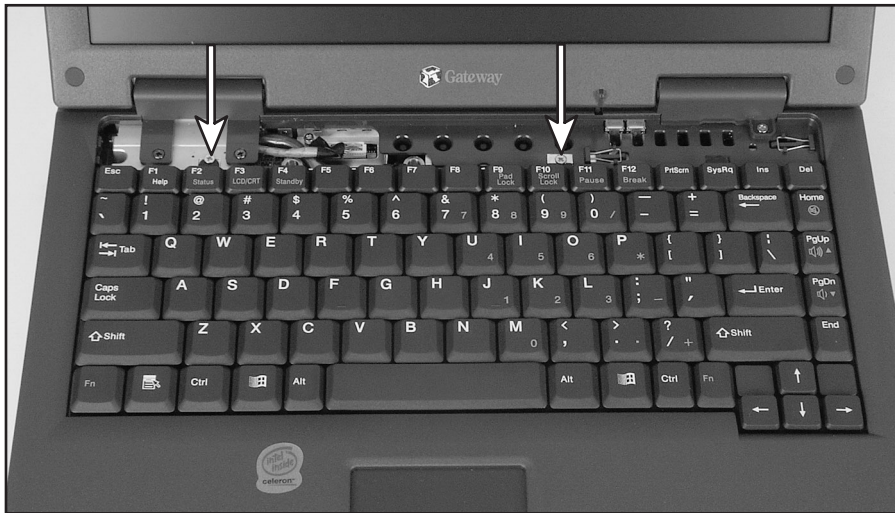
Inserting a piece of cloth between the screwdriver and keyboard and notebook case will help prevent damage to your notebook.



- 7 Pull the bezel off the notebook. You will hear small snapping sounds as the bezel comes off of the notebook. Be careful not to break off the tabs located on the left end of the bezel.

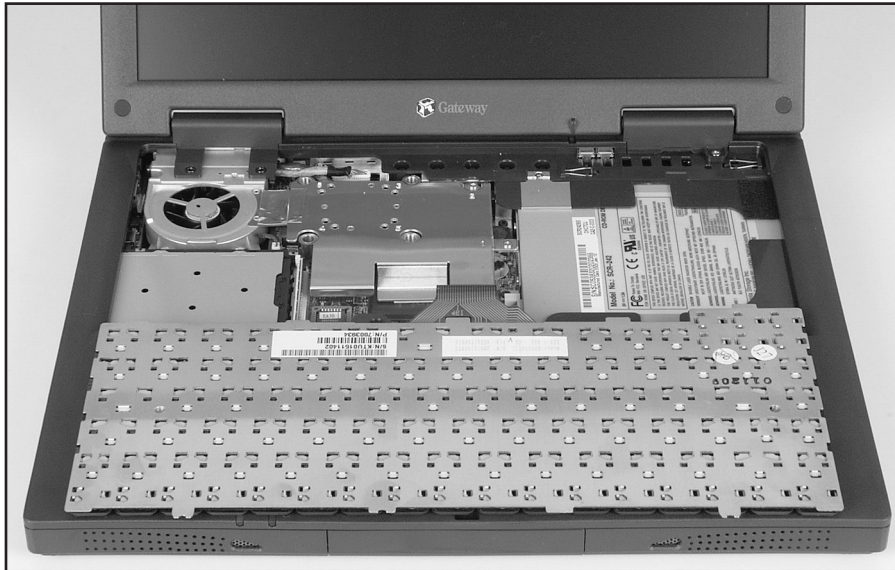


- 8 With a small Phillips screwdriver, remove the two keyboard screws and put them in a safe place.

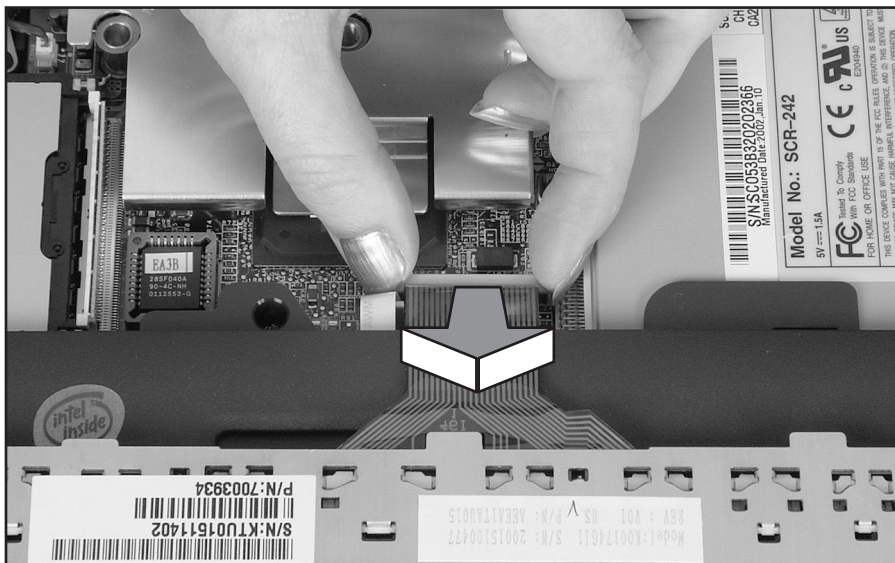


- 9 Raise the back edge of the keyboard slightly, then carefully slide the keyboard back until the five tabs on the front edge of the keyboard are free from their slots.
- 10 Slowly rotate the keyboard toward you so it lies **keys-down** on top of the notebook. Be careful not to damage the LCD panel.





- 11** Pull up on the plastic keyboard connector using two fingers. After the connector is in the raised position, gently pull the cable out of the connector. Be careful not to touch or damage any other components.



Installing the keyboard



To install the new keyboard:

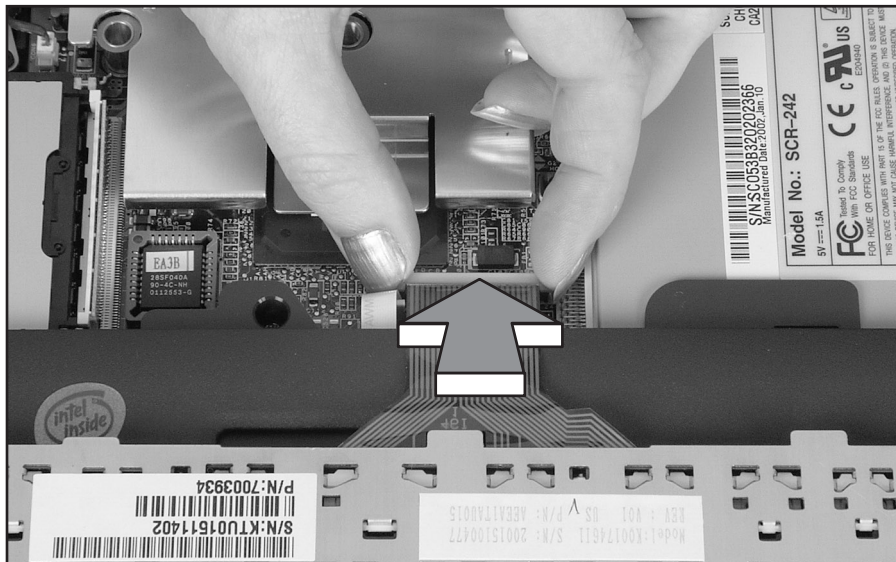
- 1 Place the new keyboard **keys-down** on the notebook with the space bar away from you.
- 2 Pull up on the keyboard connector, located near the middle of the system board, to verify the connector is in the raised position.
- 3 Slide the end of the keyboard cable into the keyboard connector.

Important



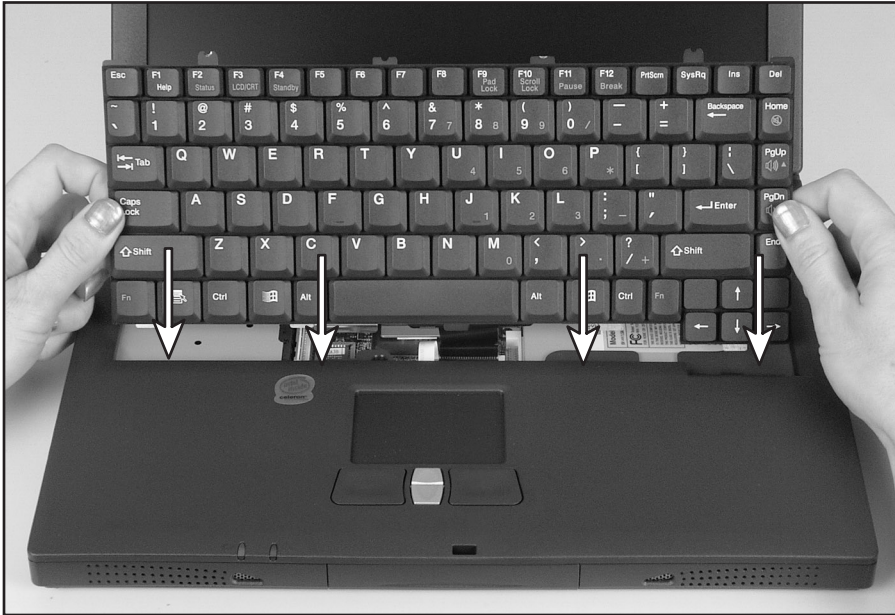
The keyboard cable should slide easily into the keyboard connector. The cable is correctly oriented if it is not twisted.

- 4 Press down on the keyboard connector using two fingers. This locks the keyboard cable into the keyboard connector.



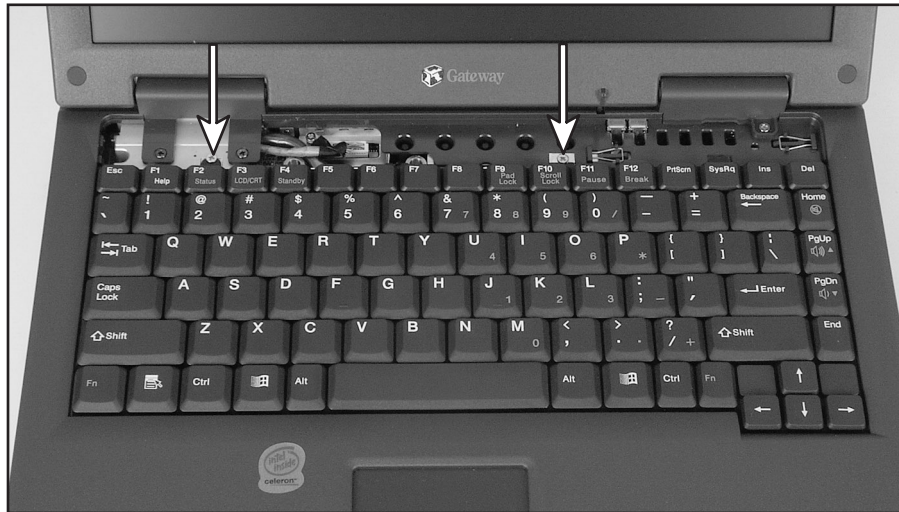
- 5 Rotate the keyboard toward the LCD panel until the keyboard is almost face-up.

- 6 Insert the five tabs located on the front edge of the keyboard into the corresponding slots under the palm rest.



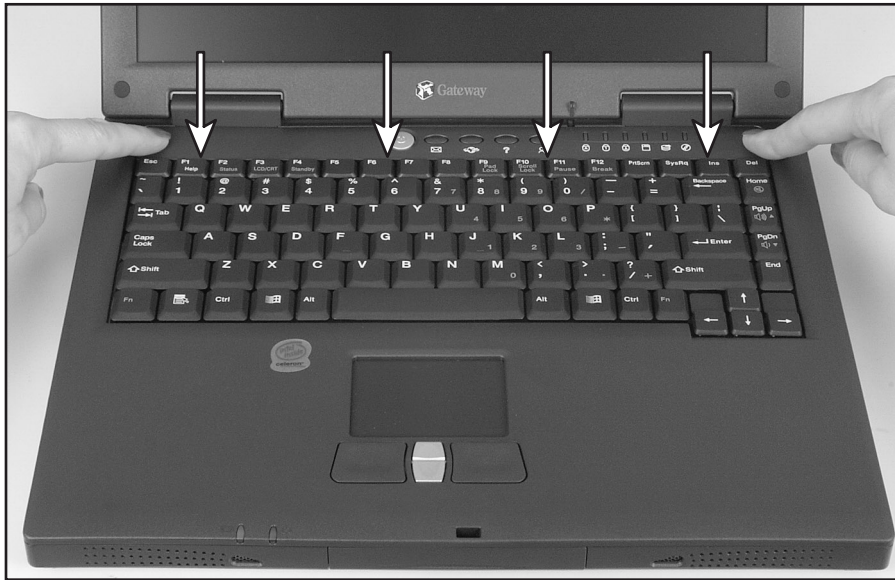
- 7 Gently press the keyboard down until it is flat all the way across. The keyboard should easily fall into place. Be careful not to damage the LCD panel.

8 Replace the two keyboard screws.



9 Slide the two tabs located on the left end of the bezel under the notebook frame.

10 Press down on the bezel in several places until it clicks in place.



The bezel is correctly mounted when you can run your finger along the bezel and find no loose spots. The bezel should be flat all the way across. If the bezel is mounted incorrectly, complete the instructions under “Replacing the bezel” on page 11.

Warning



If the bezel is not correctly replaced, your notebook could be damaged when you try to close the LCD panel.

11 Replace the battery.

12 Plug in the AC adapter and modem and network cables.

13 Turn on the notebook.



Replacing the bezel

If the bezel was mounted incorrectly, complete the following procedure.

Warning



If the bezel is not correctly replaced, your notebook could be damaged when you try to close the LCD panel.



To replace the bezel:

- 1 Insert a small flat blade screwdriver under the bottom-right corner of the keyboard bezel, between the **INS** and **DEL** keys, and gently pry it up.

Important



Inserting a piece of cloth between the screwdriver and keyboard and notebook case will help prevent damage to your notebook.

- 2 Pull the bezel off the notebook. You will hear small snapping sounds as the bezel comes away from the notebook. Be careful not to break off the tabs located on the left end of the bezel.
- 3 Slide the two tabs on the left end of the bezel under the notebook frame and press down on the bezel in several places until it clicks in place.



Technical Support

Refer to your user's guide for Gateway Technical Support information.

Safety, Regulatory, and Legal Information

Refer to your user's guide for important safety, regulatory, and legal information.

© 2002 Gateway, Inc. All rights reserved. Gateway, Gateway Country, the Gateway stylized logo, and the black-and-white spot design are trademarks or registered trademarks of Gateway, Inc. in the United States and other countries. All other brands and product names are trademarks or registered trademarks of their respective companies.

MAN US RPL SL1450 KB INST R0 04/02



8508568