

Replacing the Gateway M320 Optical Drive

This package includes an optical drive, such as a DVD drive, for your Gateway M320 notebook and these printed instructions.

Tools you need

You need a small Phillips screwdriver to replace the optical drive.

Preventing static electricity discharge

The components inside your notebook are extremely sensitive to static electricity, also known as *electrostatic discharge* (ESD).

Warning



To avoid exposure to dangerous electrical voltages and moving parts, turn off your notebook and unplug the power cord and modem and network cables before opening the case.

Caution



ESD can permanently damage electrostatic discharge-sensitive components in your notebook. Prevent ESD damage by following ESD guidelines every time you replace the keyboard.

Before replacing the optical drive, follow these guidelines:

- Turn off your notebook.
- Wear a grounding wrist strap (available at most electronics stores) and attach it to a bare metal part of your workbench or other grounded connection.

Warning



To prevent risk of electric shock, do not insert any object into the vent holes of your notebook.

- Touch a bare metal surface on your workbench or other grounded object.
- Unplug the power cord and the modem and network cables.
- Remove the battery. For more information, see “Changing batteries” in your user guide.
- Disconnect all peripheral devices and remove any PC Cards.

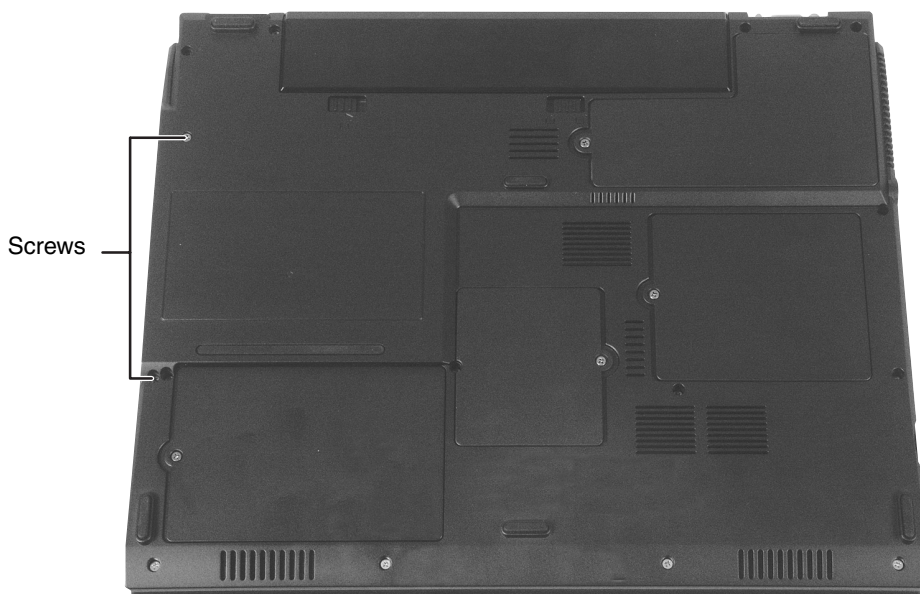
Before working with notebook components, follow these guidelines:

- Avoid static-causing surfaces such as carpeted floors, plastic, and packing foam.
- Remove components from their antistatic bags only when you are ready to use them. Do not lay components on the outside of antistatic bags because only the inside of the bags provide electrostatic protection.
- Always hold components by their edges. Avoid touching the edge connectors. Never slide components over any surface.

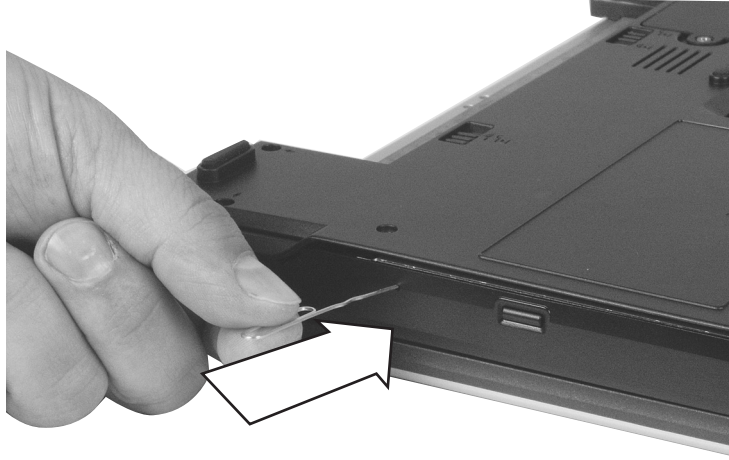
Replacing the optical drive

▶ To replace the optical drive:

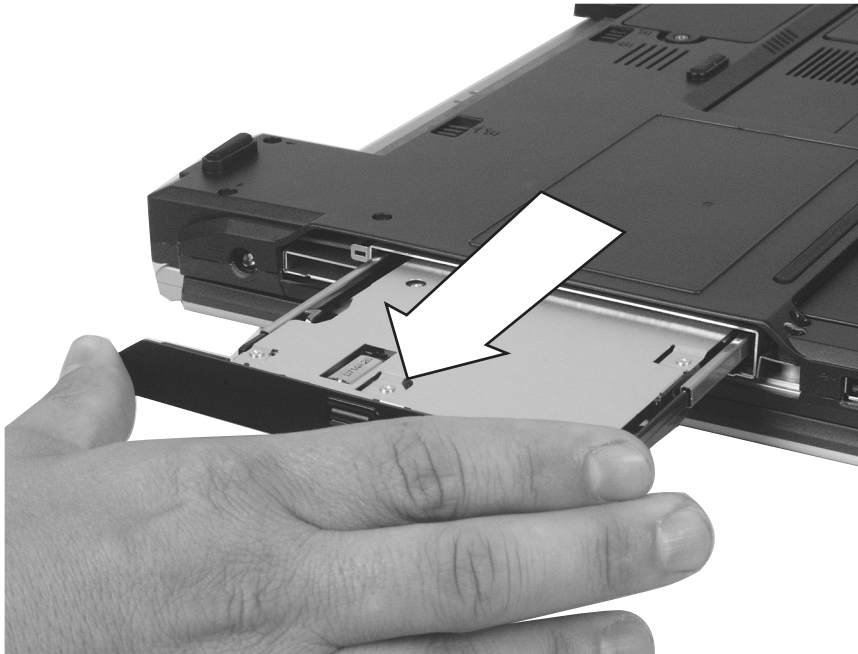
- 1 Follow the instructions under “Preventing static electricity discharge” on page 1.
- 2 Make sure the optical drive is empty and the tray is firmly closed.
- 3 Turn off your notebook.
- 4 Disconnect the AC adapter and modem and network cables.
- 5 Turn your notebook over so the bottom is facing up.
- 6 Remove the battery. For instructions, see “Changing batteries” in your user guide.
- 7 With a small Phillips screwdriver, remove the two optical drive screws and put them in a safe place.



- 8** Insert a straightened paper clip into the optical drive's manual eject hole, push in the paper clip to eject the drive tray, then pull the drive tray open.



- 9** Carefully slide the drive out of the drive bay.



- 10** Slide the new optical drive into the drive bay. Make sure that the drive fits securely in the bay.
- 11** Secure the optical drive with the two screws removed in Step 7.

- 12 Turn your notebook over so the top is facing up.
- 13 Connect the power adapter and modem and network cables, then turn on your notebook.



Technical Support

See your user guide for Gateway Technical Support information.

Safety, Regulatory, and Legal Information

See your user guide for important safety, regulatory, and legal information.

© 2004 Gateway, Inc. All rights reserved. Gateway, Gateway Country, the Gateway stylized logo, and the black-and-white spot design are trademarks or registered trademarks of Gateway, Inc. in the United States and other countries. All other brands and product names are trademarks or registered trademarks of their respective companies.



MAN STM OPTICAL RPL GDE R0 7/04

