

Replacing the Gateway M275 Keyboard

This package includes a replacement keyboard for your Gateway M275 notebook and these printed instructions.

Tools you need

You need a small Phillips screwdriver and a small flat-blade screwdriver to replace the keyboard.

Preventing static electricity discharge

The components inside your notebook are extremely sensitive to static electricity, also known as *electrostatic discharge* (ESD).

Warning



ESD can permanently damage electrostatic discharge-sensitive components in your notebook. Prevent ESD damage by following ESD guidelines every time you replace the keyboard.

Warning



To avoid exposure to dangerous electrical voltages and moving parts, turn off your notebook and unplug the power cord and modem and network cables before replacing the keyboard.

Before replacing the keyboard, follow these guidelines:

- Turn off your notebook.
- Wear a grounding wrist strap (available at most electronics stores) and attach it to a bare metal part of your workbench or other grounded connection.

Warning



To prevent risk of electric shock, do not insert any object into the vent holes of the notebook.

- Touch a bare metal surface on your workbench or other grounded object.

- Unplug the power cord and the modem and network cables.
- Remove the battery. For more information, see “Changing batteries” in your user guide.
- Disconnect all peripheral devices and remove any PC Cards.

Before working with notebook components, follow these guidelines:

- Avoid static-causing surfaces such as carpeted floors, plastic, and packing foam.
- Remove components from their antistatic bags only when you are ready to use them. Do not lay components on the outside of antistatic bags because only the inside of the bags provide electrostatic protection.
- Always hold components by their edges. Avoid touching the edge connectors. Never slide components over any surface.

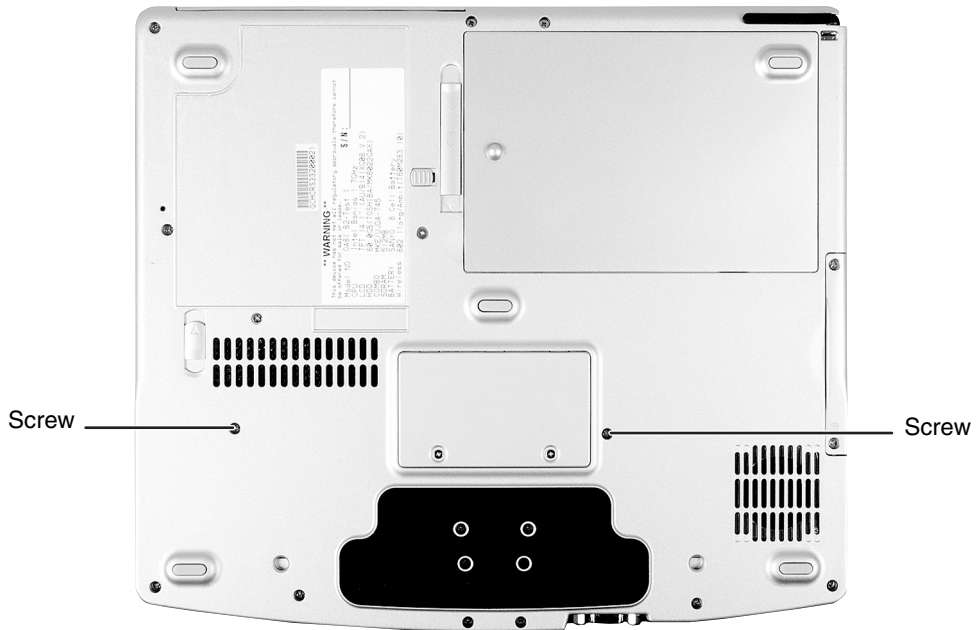
Removing the keyboard



To remove the keyboard:

- 1 Follow the instructions under “Preventing static electricity discharge” on page 1.
- 2 Turn off your notebook.
- 3 Disconnect the AC adapter and modem and network cables.
- 4 Disconnect your notebook from the optional port replicator.
- 5 Turn your notebook over so the bottom is facing up.
- 6 Remove the main and optional secondary batteries.

7 Remove the two keyboard screws.



8 Turn your notebook over so the top is facing up.

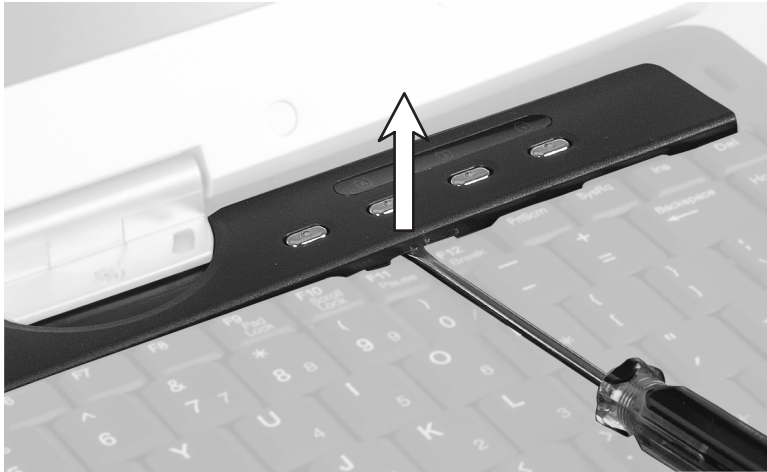
9 Open the LCD panel to the normal viewing position.

- 10 Insert the small flat-blade screwdriver under the bottom of the keyboard bezel between the F11 and F12 keys and gently pry it up.

Important



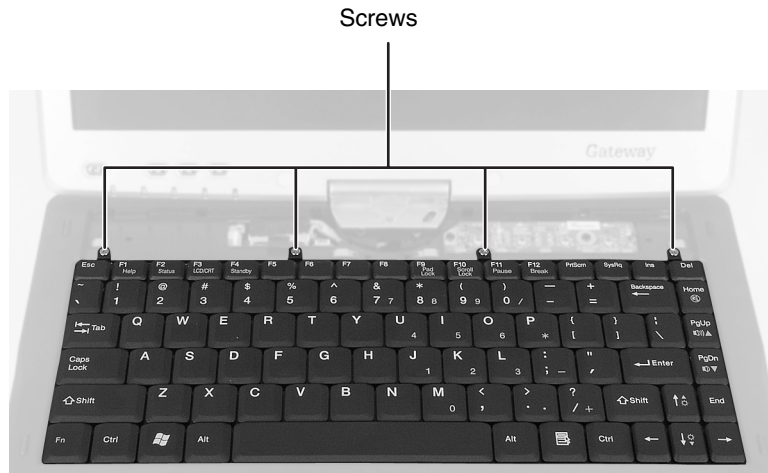
Inserting a piece of cloth between the screwdriver and keyboard will help prevent damage to your convertible tablet PC.



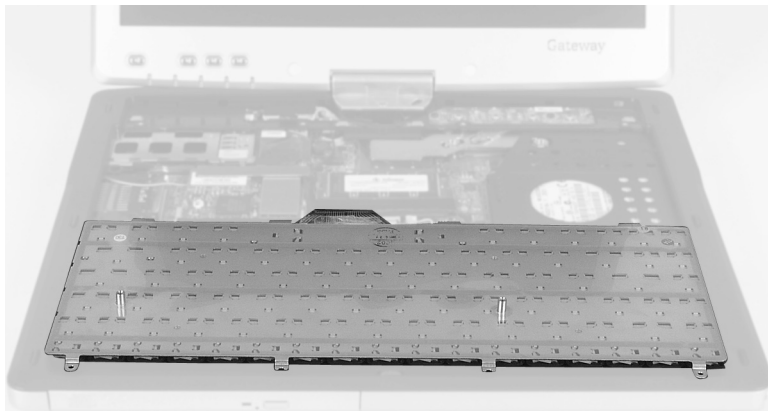
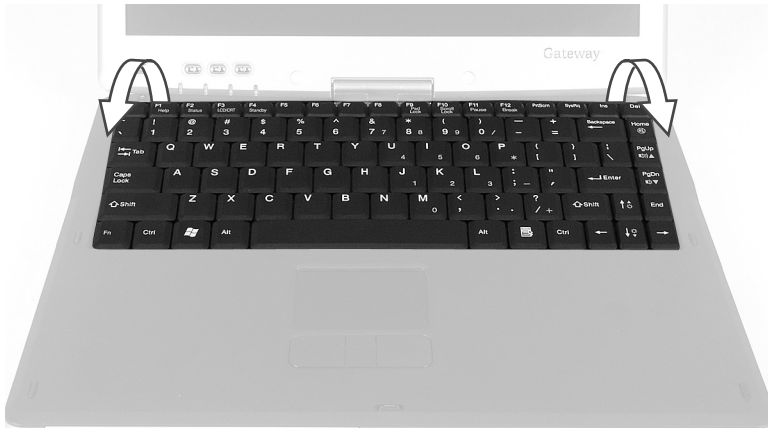
- 11 Remove the bezel from your convertible tablet PC by pulling the bezel toward you and at the same time lifting its front to clear the keyboard. You will hear small snapping sounds as the bezel comes away from your convertible tablet PC. Be careful not to break off the tabs found on the bottom of the bezel.



- 12** With a small Phillips screwdriver, remove the four keyboard screws and put them in a safe place.



- 13** Lift the back edge of the keyboard, then slowly rotate it toward you so it lies **keys-down** on top of your convertible tablet PC. Be careful not to damage the LCD panel.



- 14** Carefully insert the small flat-blade screwdriver between the keyboard cable and the black plastic hinge where the cable connects to the system board. Gently lift the hinge off the cable. The cable is now free and you can remove the keyboard.



Installing the keyboard

To install the keyboard:

- 1 Place the new keyboard **keys-down** on your notebook with the space bar away from you.



- 2 Verify the black plastic hinge on the system board keyboard connector is in the raised position.
- 3 Insert the end of the keyboard cable between the black plastic hinge and the white connector.

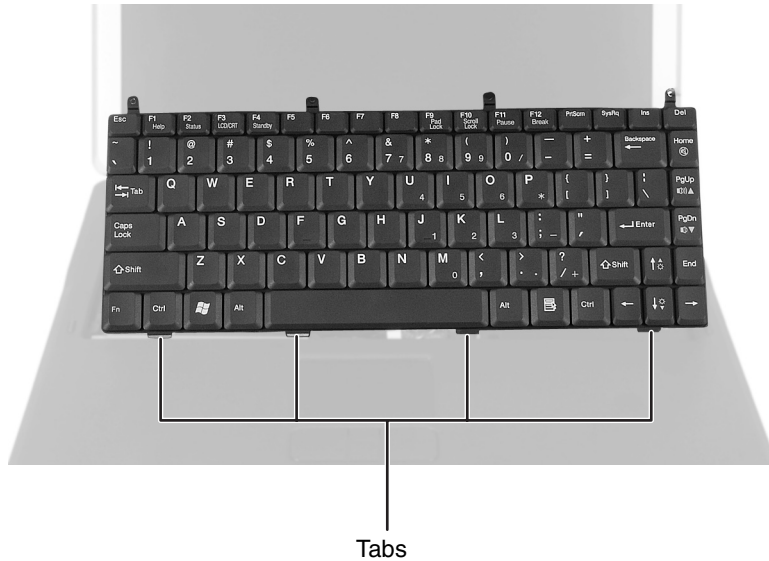
Important



The plug is correctly oriented if the cable is not twisted.

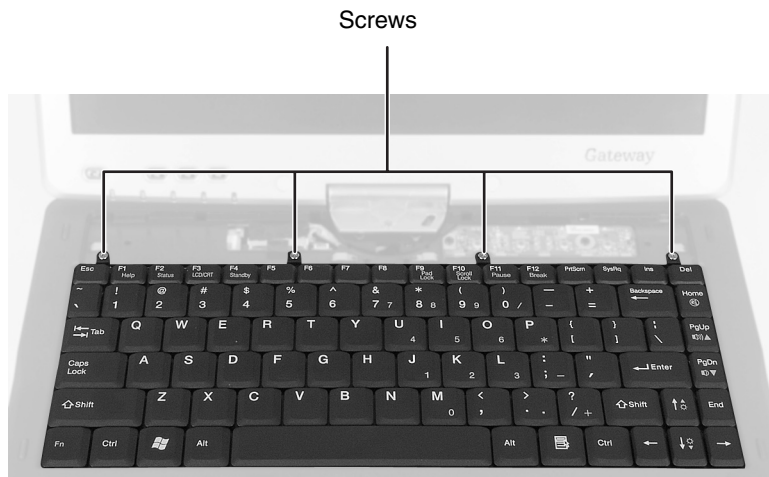
- 4 Press the black plastic hinge onto the keyboard cable.
- 5 Rotate the keyboard toward the LCD panel until the keyboard is almost face-up.

- 6** Insert the tabs on the front of the keyboard under the palm rest.

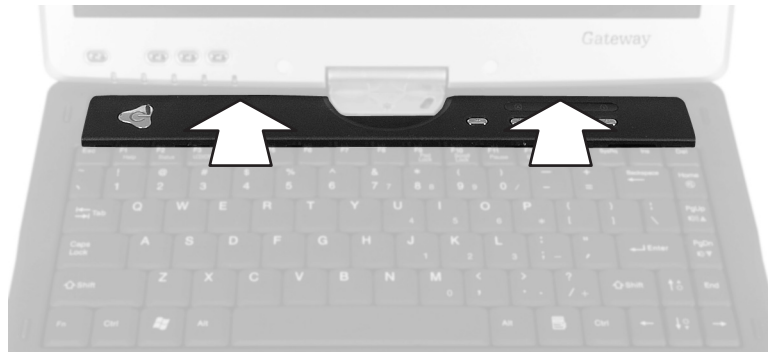


- 7** Gently press the keyboard down until it is flat all the way across. The keyboard should easily fall into place. Be careful not to damage the LCD panel.

- 8** Replace the four keyboard screws.



- 9 Slide the tabs on the bottom side of the bezel under your convertible tablet PC frame.



- 10 Press down on the bezel in several places to make sure it is correctly mounted. The bezel is correctly mounted when you can run your finger along the bezel and find no loose spots. The bezel should be flat all the way across.

Warning



If the bezel is not correctly replaced, your convertible tablet PC could be damaged when you try to close the LCD panel.

- 11 Turn your convertible tablet PC over so the bottom is facing up.
- 12 Replace the two keyboard screws.
- 13 Replace the battery, connect the power adapter and modem and network cables, then turn on your notebook.



Safety, Regulatory, and Legal Information

See your user's guide for important technical support, safety, regulatory, and legal information.

© 2003 Gateway, Inc. All rights reserved. Gateway, Gateway Country, the Gateway stylized logo, and the black-and-white spot design are trademarks or registered trademarks of Gateway, Inc. in the United States and other countries. All other brands and product names are trademarks or registered trademarks of their respective companies.

MAN RPL M275 KB INST R0 11/03



8509557