



G Pro / GV Pro

User Manual

Published October 2002

Copyright©2002 ASRock INC. All rights reserved.

Copyright Notice:

No part of this manual may be reproduced, transcribed, transmitted, or translated in any language, in any form or by any means, except duplication of documentation by the purchaser for backup purpose, without written consent of ASRock Inc.

Products and corporate names appearing in this guide may or may not be registered trademarks or copyrights of their respective companies, and are used only for identification or explanation and to the owners' benefit, without intent to infringe.

Disclaimer:

Specifications and information contained in this manual are furnished for informational use only and subject to change without notice, and should not be constructed as a commitment by ASRock. ASRock assumes no responsibility for any errors or omissions that may appear in this manual.

With respect to the contents of this manual, ASRock does not provide warranty of any kind, either expressed or implied, including but not limited to the implied warranties or conditions of merchantability or fitness for a particular purpose.

In no event shall ASRock, its directors, officers, employees, or agents be liable for any indirect, special, incidental, or consequential damages (including damages for loss of profits, loss of business, loss of data, interruption of business and the like), even if ASRock has been advised of the possibility of such damages arising from any defect or error in the manual or product.

ASRock Website: <http://www.asrock.com>

Contents

1 Introduction	4
1.1 Package Contents	4
1.2 Specifications	4
1.3 Motherboard Layout (G Pro)	6
1.4 Motherboard Layout (GV Pro)	7
1.5 ASRock I/O™ (G Pro / GV Pro)	8
2 Installation	9
2.1 Screw Holes	9
2.2 Pre-installation Precautions	9
2.3 CPU Installation	9
2.4 Installation of Heatsink and CPU fan	10
2.5 Installation of Memory Modules (DIMM)	10
2.6 Expansion Slots	11
2.7 Jumpers Setup	12
2.8 Connectors	12
3 BIOS Setup	15
3.1 BIOS Setup Program	15
3.1.1 BIOS Menu Bar	15
3.1.2 Legend Bar	15
3.2 Main Menu	16
3.3 Advanced, Security, Power, Boot, and Exit Menus	18
4 Software Support.....	19
4.1 Installing Operating System	19
4.2 Support CD Information	19
4.2.1 Running Support CD	19
4.2.2 Drivers Menu	19
4.2.3 Utilities Menu	19
4.2.4 Contact Information	19
Appendix: Advanced BIOS Setup	20
1. Advanced Menu	20
2. Security Menu	22
3. Power Menu	23
4. Boot Menu	24
5. Exit Menu	24

Chapter 1 Introduction

Thank you for purchasing ASRock G Pro / GV Pro motherboard, a reliable motherboard produced under ASRock's consistently stringent quality control. It delivers excellent performance with robust design conforming to ASRock's commitment to quality and endurance.

Chapter 1 and 2 of this manual contain introduction of the motherboard and step-by-step installation guide for new DIY system builders. Chapter 3 and 4 contain basic BIOS setup and Support CD information.

For advanced users' reference, the Appendix offers more advanced BIOS setup information.

1.1 Package Contents

ASRock G Pro or GV Pro motherboard

(Micro ATX form factor: 9.6" x 9.6", 24.4 x 24.4 cm)

ASRock G Pro / GV Pro Quick Installation Guide

ASRock Intel-SiS Support CD

1 cable for IDE devices (1 x ATA 66/100/133)

1 cable for floppy drive (1 x ribbon cable)

1 ASRock I/O shield

1 COM port bracket

1.2 Specifications

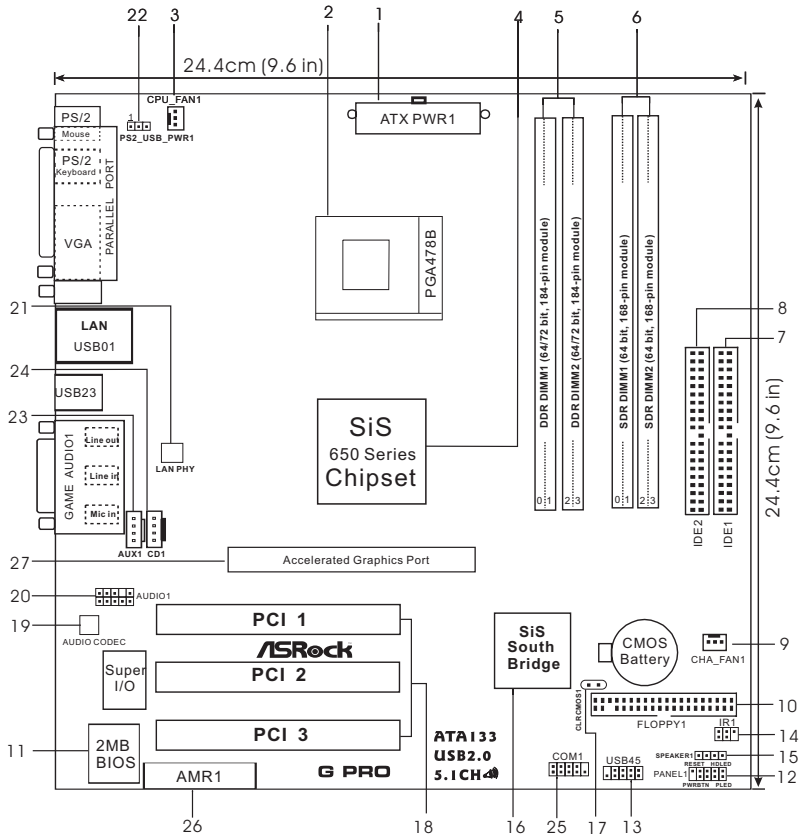
Platform:	Micro ATX form factor (9.6" x 9.6", 24.4 x 24.4 cm)
CPU:	Socket 478 for Intel® Pentium® 4 / Celeron® processor
Chipsets:	North Bridge: SiS 650 series chipsets; standard FSB 400 MHz, Max. 533 MHz South Bridge: Supports USB 2.0, ATA 133
Clock Generator:	100 MHz - 200MHz
Memory:	2 slots for DDR: DIMM1 and DIMM2 (PC1600/ PC2100), Max. 2GB 2 slots for SDR: DIMM3 and DIMM4 (PC100/ PC133), Max. 2GB
IDE:	IDE1: ATA 133 / Ultra DMA Mode 6 IDE2: ATA 133 / Ultra DMA Mode 6 Can connect up to 4 IDE devices
Floppy Port:	Supports floppy disk drive
Audio:	5.1 channels AC'97 Audio
LAN:	Speed: 802.3u (10/100 Ethernet), supports Wake-On-LAN

Hardware Monitor:	CPU temperature sensing Chassis temperature sensing CPU overheat shutdown to protect CPU life Voltage monitoring: +12V, +5V, +3V, Vcore CPU fan tachometer Chassis fan tachometer
PCI slots:	3 slots with PCI Specification 2.2
AGP slot (for G Pro only):	1 universal AGP slot, supports 3.3v / 1.5v, 4X / 2X / 1X AGP card
AMR slot:	1 slot, supports ASRock AMR modem card
USB 2.0:	4 default USB ports and a set of header for two additional USB ports upgrade
ASRock I/O™:	PS/2: keyboard / mouse RJ 45 4 rear default USB ports (USB 2.0) 1 VGA port 1 parallel port: ECP/EPP support Audio Jack: Line Out/ Line In/ Microphone + Game port
BIOS:	AMI legal BIOS Supports "Plug and Play" ACPI 1.1 compliance wake up events Supports jumperfree SMBIOS 2.3.1 support CPU frequency stepless control (only for advanced users' reference)
OS:	Windows 98SE / ME / 2000 / XP compliant



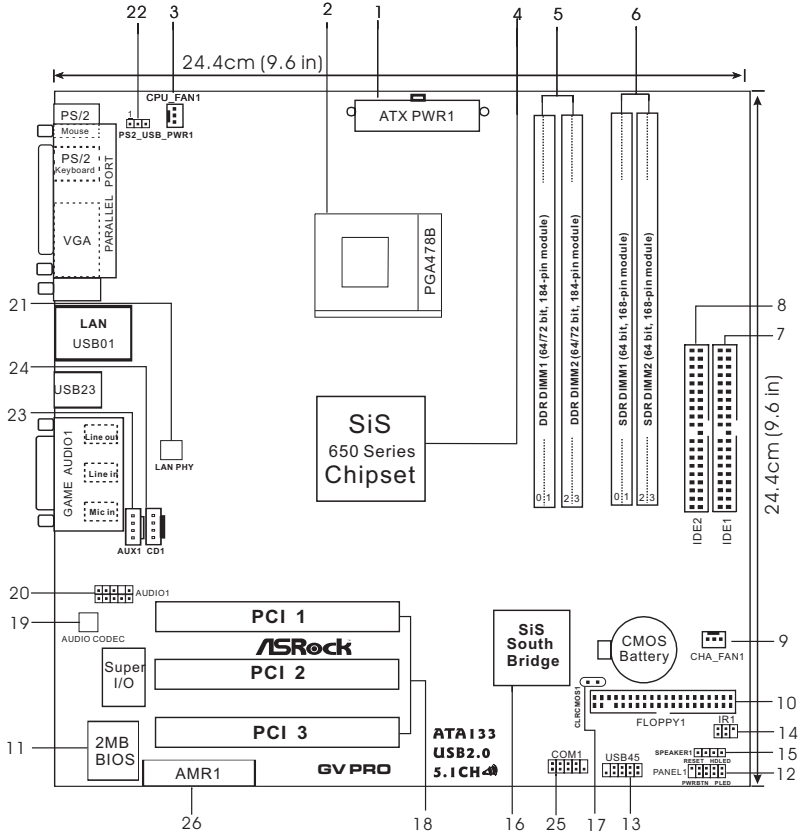
1. While CPU overheat is detected, the system will automatically shutdown. Please check if the CPU fan on the motherboard functions properly before you resume the system.
2. Although G Pro/GV Pro offers stepless control, it is not recommended to perform over clocking. Frequencies other than the recommended CPU bus frequency may cause the instability of the system or damage the CPU.

1.3 Motherboard Layout (G Pro)



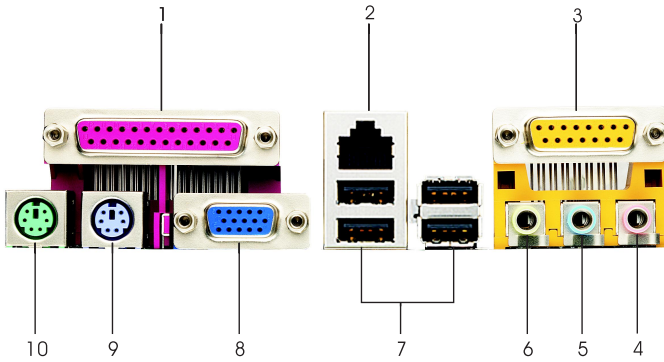
- | | | | |
|----|---------------------------------------|----|--|
| 1 | ATX power connector (ATXPWR1) | 15 | External speaker connector (SPEAKER1) |
| 2 | CPU socket | 16 | South Bridge controller |
| 3 | CPU fan connector (CPU_FAN1) | 17 | Clear CMOS (CLR CMOS1) |
| 4 | North Bridge controller | 18 | PCI slots |
| 5 | 184-pin DDR DIMM slots (blue) | 19 | AUDIO CODEC |
| 6 | 168-pin SDRAM DIMM slots (black) | 20 | Front panel audio connector (AUDIO1) |
| 7 | Primary IDE connector (IDE1, blue) | 21 | LAN PHY |
| 8 | Secondary IDE connector (IDE2, black) | 22 | PS2_USB_PWR1 jumper |
| 9 | Chassis fan connector (CHA_FAN1) | 23 | Internal audio connector: AUX1 (white) |
| 10 | Floppy connector (FLOPPY1) | 24 | Internal audio connector: CD1 (black) |
| 11 | Flash Memory | 25 | Serial port connector (COM1) |
| 12 | System panel connector (PANEL1) | 26 | AMR slot |
| 13 | USB header (USB45) | 27 | AGP slot |
| 14 | Infrared module connector (IR1) | | |

1.4 Motherboard Layout (GV Pro)



- | | | | |
|----|---------------------------------------|----|---------------------------------------|
| 1 | ATX power connector (ATXPWR1) | 15 | External speaker connector (SPEAKER1) |
| 2 | CPU socket | 16 | South Bridge controller |
| 3 | CPU fan connector (CPU_FAN1) | 17 | Clear CMOS (CLRCSMOS1) |
| 4 | North Bridge controller | 18 | PCI slots |
| 5 | 184-pin DDR DIMM slots (blue) | 19 | AUDIO CODEC |
| 6 | 168-pin SDRAM DIMM slots (black) | 20 | Front panel audio connector (AUDIO1) |
| 7 | Primary IDE connector (IDE1, blue) | 21 | LAN PHY |
| 8 | Secondary IDE connector (IDE2, black) | 22 | PS2_USB_PWR1 jumper |
| 9 | Chassis fan connector (CHA_FAN1) | 23 | Internal audio connector: AUX1(white) |
| 10 | Floppy connector (FLOPPY1) | 24 | Internal audio connector: CD1 (black) |
| 11 | Flash Memory | 25 | Serial port connector (COM1) |
| 12 | System panel connector (PANEL1) | 26 | AMR slot |
| 13 | USB header (USB45) | | |
| 14 | Infrared module connector (IR1) | | |

1.5 ASRock I/O™ (G Pro / GV Pro)



- | | | | |
|---|----------------------|----|-----------------------------|
| 1 | Parallel port | 6 | Line Out (Lime) |
| 2 | RJ-45 port | 7 | USB 2.0 ports |
| 3 | Game port | 8 | VGA port |
| 4 | Microphone (Pink) | 9 | PS/2 keyboard port (Purple) |
| 5 | Line In (Light Blue) | 10 | PS/2 mouse port (Green) |

Chapter 2 Installation

G Pro / GV Pro is a Micro ATX form factor (9.6" x 9.6", 24.4 x 24.4 cm) motherboard. Before you install the motherboard, study the configuration of your chassis to ensure that the motherboard fits into it.



Make sure to unplug the power cord before installing or removing the motherboard. Failure to do so may cause physical injuries to you and damages to motherboard components.

2.1 Screw Holes

Place screws into the holes indicated by circles to secure the motherboard to the chassis.



Do not over-tighten the screws! Doing so may damage the motherboard.

2.2 Pre-installation Precautions

Take note of the following precautions before you install motherboard components or change any motherboard settings.

1. Unplug the power cord from the wall socket before touching any component.
2. To avoid damaging the motherboard components due to static electricity, NEVER place your motherboard directly on the carpet or the like. Also remember to use a grounded wrist strap or touch a safety grounded object before you handle components.
3. Hold components by the edges and do not touch the ICs.
4. Whenever you uninstall any component, place it on a grounded antistatic pad or in the bag that comes with the component.

Before you install or remove any component, ensure that the power is switched off or the power cord is detached from the power supply.

Failure to do so may cause severe damage to the motherboard, peripherals, and/or components.

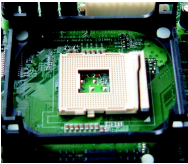
2.3 CPU Installation

- Step 1. Unlock the socket by lifting the lever up to a 90° to 100° angle.
- Step 2. Position the CPU directly above the socket such that its marked corner matches the base of the socket lever.
- Step 3. Carefully insert the CPU into the socket until it fits in place.



The CPU fits only in one correct orientation. DO NOT force the CPU into the socket to avoid bending of the pins.

Step 4. When the CPU is in place, press it firmly on the socket while you push down the socket lever to secure the CPU. The lever clicks on the side tab to indicate that it is locked.



Step 1



Step 2, 3



Step 4

2.4 Installation of CPU Fan and Heatsink

Intel® Pentium® 4 CPU requires larger heatsink and cooling fan. Thermal grease between the CPU and the heatsink is also needed to improve heat transfer. Make sure that the CPU and the heatsink are securely fastened and in good contact with each other. For proper installation, please kindly refer to the instruction manuals of vendors of CPU fan and heatsink.

2.5 Installation of Memory Modules (DIMM)

SDRAM (Synchronous DRAM) DIMM (Dual In-line Memory Module) has 168 pins and DDR (Double Data Rate) SDRAM DIMM has 184 pins.



Please make sure to disconnect power supply before adding or removing DIMMs or the system components.



168-pin RAM



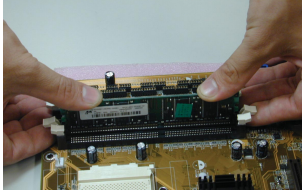
184-pin RAM

The 168-pin SDRAM DIMM (black) and 184-pin DDR DIMM (blue) can be easily distinguished by the fool-proof design.



Please do not use both 168-pin SDRAM DIMM and 184-pin DDR DIMM at the same time. To optimize the compatibility, it is not recommended to use two different models of the DIMMs at the same time.

-
- Step 1. Unlock a DIMM slot by pressing the retaining clips outward.
 - Step 2. Align a DIMM on the slot such that the notch on the DIMM matches the break on the slot.
 - Step 3. Firmly insert the DIMM into the slot until the retaining clip snap back in place and the DIMM is properly seated.



2.6 Expansion Slots (PCI, AMR, and AGP Slots)

There are 3 PCI slots and 1 AMR slot on both G Pro and GV Pro motherboards. Additionally, there is one AGP slot on G Pro.

PCI slots: PCI slots are used to install expansion cards that have the 32-bit PCI interface.

AMR slot: AMR slot is used to insert AMR cards with v.92 Modem functionality.

AGP slot: The AGP slot is used to install a graphics card.

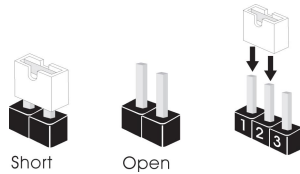
The ASRock AGP slot has a special locking mechanism which can securely fasten the graphics card inserted.

Installing an expansion card

- Step 1. Before installing the expansion card, read the documentation of the expansion card and make necessary hardware settings for the card.
- Step 2. Remove the system unit cover (if your motherboard is already installed in a chassis).
- Step 3. Remove the bracket facing the slot that you intend to use. Keep the screw for later use.
- Step 4. Align the card connector with the slot and press firmly until the card is completely seated on the slot.
- Step 5. Fasten the card to the chassis with screws.
- Step 6. Replace the system cover.

2.7 Jumpers Setup

The illustration shows how jumpers are setup. When the jumper cap is placed on pins, the jumper is “SHORT”. If no jumper cap is placed on pins, the jumper is “OPEN”. The illustration shows a 3-pin jumper whose pin1 and pin2 are “SHORT” when jumper cap is placed on these 2 pins.



Jumper	Setting	Description
PS2_USB_PWR1 (see p.6/p.7 item 22)	 +5V +5VSB	Short pin2, pin3 to enable +5VSB (standby) for PS/2 or USB wake up events.

Note: To select +5VSB, it requires 2 Amp and higher standby current.

CLRCMOS (see p.6/p.7 item 17)		Disconnect the power cord, then short the solder points to clear CMOS by using metal material, e.g., a paper clip.
----------------------------------	--	--

2.8 Connectors

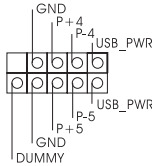


Connectors are NOT jumpers. DO NOT place jumper caps over these connectors.

Connector	Figure	Description
FDD connector (33-pin FLOPPY1) (see p.6/p.7 item 10)		
Note: Match the red marking on the floppy ribbon cable with Pin1		
Primary IDE connector (Blue) (39-pin IDE1) (see p.6/p.7 item 7)		Secondary IDE connector (Black) (39-pin IDE2) (see p.6/p.7 item 8)
Connect to the motherboard —		Connect to the IDE devices
80-Pin ATA 100/133 cable		

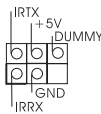
Note: To optimize compatibility and performance, please connect your hard disk drive to the primary IDE connector (IDE1, blue) and CD-ROM to the secondary IDE connector (IDE2, black).

USB header
(9-pin USB45)
(see p.6/p.7 item 13)



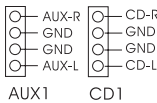
ASRock I/O™ already provided 4 default USB ports. If the 4-USB ports on the rear panel are not sufficient, an USB header is available for 2 additional USB ports.

Infrared module connector
(5-pin IR1)
(see p.6/p.7 item 14)



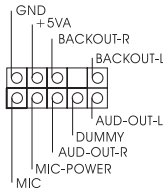
This connector supports an optional wireless transmitting and receiving infrared module.

Internal audio connectors
(4-pin CD1, 4-pin AUX1)
(CD1: see p.6/p.7 item 24)
(AUX1: see p.6/p.7 item 23)



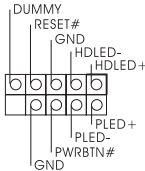
These connectors allow you to receive stereo audio input from sound sources such as a CD-ROM, DVD-ROM, TV tuner card, or MPEG card.

Front panel audio connector
(9-pin AUDIO1)
(see p.6/p.7 item 20)



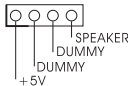
This is an interface for front panel audio cable that allows convenient connection and control of audio devices.

System panel connector
(9-pin PANEL1)
(see p.6/p.7 item 12)



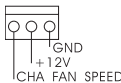
This connector accommodates several system front panel functions.

External speaker connector
(4-pin SPEAKER 1)
(see p.6/p.7 item 15)



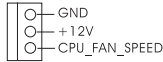
This connector allows you to attach to an external speaker.

Chassis fan connector
(3-pin CHA_FAN1)
(see p.6/p.7 item 9)



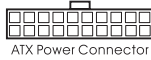
Connect the fan cable to the connector matching the black wire to the ground pin.

CPU fan connector
(3-pin CPU_FAN1)
(see p.6/p.7 item 3)



Connect the fan cable to the connector matching the black wire to the ground pin.

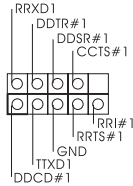
ATX power connector
(20-pin ATXPWR1)
(see p.6/p.7 item 1)



ATX Power Connector

Connect an ATX power supply to the connector.

COM1 connector
(9-pin COM1)
(see p.6/p.7 item 25)



This connector supports a serial port module.

Chapter 3 BIOS Setup

3.1 BIOS Setup Utility

This section explains how to configure your system using the BIOS Setup Utility. The Flash Memory on the motherboard stores the BIOS Setup Utility. When you start up the computer, there is a chance for you to run the BIOS Setup. Press <F2> during the Power-On-Self-Test (POST) to enter the BIOS Setup Utility, otherwise, POST continues with its test routines.

If you wish to enter the BIOS Setup after POST, restart the system by pressing <Ctl> + <Alt> + <Delete>, or by pressing the reset button on the system chassis. You can also restart by turning the system off and then back on.

The BIOS Setup Utility is designed to be user-friendly. It is a menu-driven program, which allows you to scroll through its various sub-menus and select among the predetermined choices.



Because the BIOS software is constantly being updated, the following BIOS setup screens and descriptions are for reference purpose only, and may not exactly match what you see on your screen.

3.1.1 BIOS Menu Bar

The top of the screen has a menu bar with the following selections:

MAIN	Sets up the basic system configuration
ADVANCED	Sets up the advanced features
SECURITY	Sets up the security features
POWER	Configures Power Management features
BOOT	Configures the default system device that is used to locate and load the Operating System
EXIT	Exits the current menu or the BIOS Setup

To access the menu bar items, press the right or left arrow key on the keyboard until the desired item is highlighted.

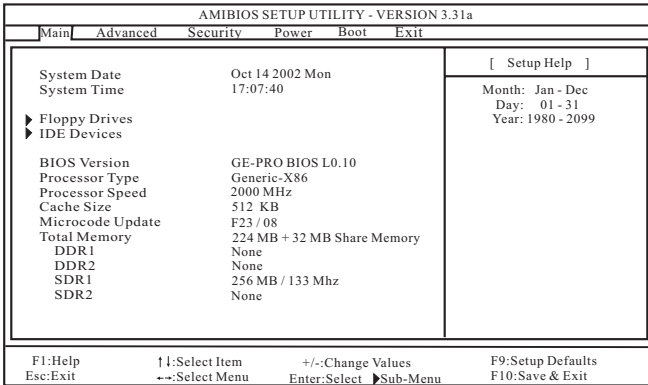
3.1.2 Legend Bar

At the bottom of the Setup Screen is a legend bar. The following table lists the keys in the legend bar with their corresponding functions.

Navigation Key(s)	Function Description
<F1>	Displays the General Help Screen
<ESC>	Jumps to the Exit menu or returns to the upper menu from the current menu
↑ / ↓	Moves cursor up or down between fields
← / →	Selects menu to the left or right
+ / -	Increases or decreases values
<Enter>	Brings up a selected menu for a highlighted field
<F9>	Resets the current screen to its Setup Defaults
<F10>	Saves changes and exits Setup

3.2 Main Menu

When you enter the BIOS Setup Utility, the following screen appears.



System Date [Month/Day/Year]

Set the system date that you specify. Valid values for month, day, and year are Month: (Jan to Dec), Day: (1 to 31), Year: (up to 2099). Use ↑ ↓ keys to move between the Month, Day and Year fields.

System Time [Hour:Minute:Second]

Set the system to the time that you specify. Use ↑ ↓ keys to move between the Hour, Minute and Second fields.

Floppy Drives

Use this to set the type of floppy drives installed.

IDE Devices

Use this to configure IDE devices.



TYPE

It allows user to select the type of the IDE Drive. Below are the configuration options. After making your selections on this sub-menu, press <ESC> key to return to the upper menu, in which the hard disk drive field will display the size for the hard disk drive that you configured.

[USER]: It allows user to manually enter the number of cylinders, heads, and sectors per track for the drive.



Before attempting to configure a hard disk drive, make sure you have the correct configuration information supplied by the drive manufacturer. Incorrect settings may cause the system to fail to recognize the installed hard disk.

[Auto]: Select [Auto] to automatically detect hard disk drive. If auto-detection is successful, the BIOS Setup automatically fills in the correct values for the remaining fields on this sub-menu. If the auto-detection fails, it may be due to that the hard disk is too old or too new. If the hard disk was already formatted on an older system, the BIOS Setup may detect incorrect parameters. In these cases, select [User] to manually enter the IDE hard disk drive parameters.



After entering the hard disk information into BIOS, use a disk utility, such as FDISK, to partition and format new IDE hard disk drives. This is necessary so that you can write or read data from the hard disk. Make sure to set the partition of the Primary IDE hard disk drives to active.

[CD/DVD]: This is used for IDE CD/DVD drives.

[ARMD]: This is used for IDE ARMD (Accelerated RemovableMedia Device), such as MO.

Cylinders

This is used to configure the number of cylinders. Refer to the drive documentation to determine the correct value.

Heads

This is used to configure the number of read/write heads. Refer to the drive documentation to determine the correct values.

Write Pre-compensation

Enter Write Pre-compensation sector. Refer to the drive documentation to determine the correct value.

Sectors

This is used to configure the number of sectors per track. Refer to the drive documentation to determine the correct value.

Maximum Capacity

This field shows the drive's maximum capacity as calculated by the BIOS based on the drive information you entered.

LBA Mode

This allows user to select the LBA mode for a hard disk > 512 MB under DOS and Windows; for Netware and UNIX user, select [Off] to disable the LBA mode.

Block Mode

Set the block mode to [On] will enhance hard disk performance by reading or writing more data during each transfer.

Fast Programmed I/O Modes

This allows user to set the PIO mode to enhance hard disk performance by optimizing the hard disk timing.

32 Bit Transfer Mode

It allows user to enable 32-bit access to maximize the IDE hard disk data transfer rate.

Ultra DMA Mode

Ultra DMA capability allows improved transfer speeds and data integrity for compatible IDE devices. Set to [Disabled] to suppress Ultra DMA capability.

3.3 Advanced, Security, Power, Boot, and Exit Menus

Detailed descriptions of these menus are listed in the Appendix, see p.20.

Chapter 4 Software Support

4.1 Install Operating System

This motherboard supports various Windows operating systems (98SE/ ME/ 2000/ XP). Because motherboard settings and hardware options vary, use the setup procedures in this chapter for general reference only. Refer to your OS documentation for more information.

4.2 Support CD Information

The Support CD that came with the motherboard contains necessary drivers and useful utilities that enhance the motherboard features.

4.2.1 Running The Support CD

To begin using the support CD, insert the CD into your CD-ROM drive. The CD automatically displays the Main Menu if "AUTORUN" is enabled in your computer. If the Main Menu did not appear automatically, locate and double click on the file ASSETUP.EXE from the BIN folder in the Support CD to display the menus.

4.2.2 Drivers Menu

The Drivers Menu shows the available devices drivers if the system detects installed devices. Install the necessary drivers to activate the devices.

4.2.3 Utilities Menu

The Utilities Menu shows the applications software that the motherboard supports. Click on a specific item then follow the installation wizard to install it.

4.2.4 ASRock PC-DIY Live Demo Program

ASRock presents you a multimedia PC-DIY live demo, which shows you how to install your own PC system step by step. You can find the file through the following path:

..\MPEGAV\AVSEQ01.DAT

To see this demo program, you can run Microsoft Media Player to play the file.

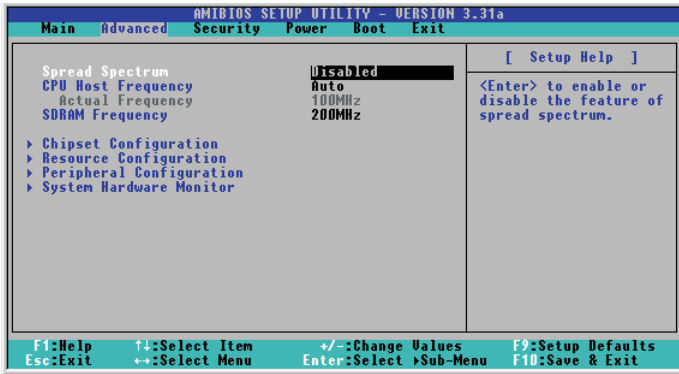
4.2.5 Contact Information

If you need to contact ASRock or want to know more about ASRock, welcome to ASRock's website: <http://www.asrock.com>; or you may contact your dealer for further information.

Appendix: Advanced BIOS Setup

This section will introduce you the following BIOS Setup menus: “Advanced,” “Security,” “Power,” “Boot,” and “Exit.”

1. Advanced BIOS Setup Menu



Spread Spectrum:

This field should always be “Disabled” for better system stability.

CPU Host Frequency:

[Auto]: The motherboard detects the jumper setup and sets the CPU host frequency automatically.

[Manual]: This allows user to set CPU host frequency manually. However, this is not recommended unless user thoroughly knows the feature. Wrong setup may cause problems during operation.

SDRAM Frequency:

[Auto]: The motherboard detects the memory module(s) inserted and automatically assigns appropriate frequency.

[Other values]: This allows user to select the value as operating frequency.

Chipset Configuration:

AGP Aperture Size: It refers to a section of the PCI memory address range used for graphics memory. We recommend that you leave this field at the default value unless your AGP card requires other sizes.

OnBoard VGA Share Memory: This allows you to select the size of share memory for onboard VGA. Onboard VGA will get better resolution if larger size of share memory is selected. Please do not select [None] if AGP or PCI graphics card is not inserted.

USB Controller: Use this to enable or disable the use of USB controller.

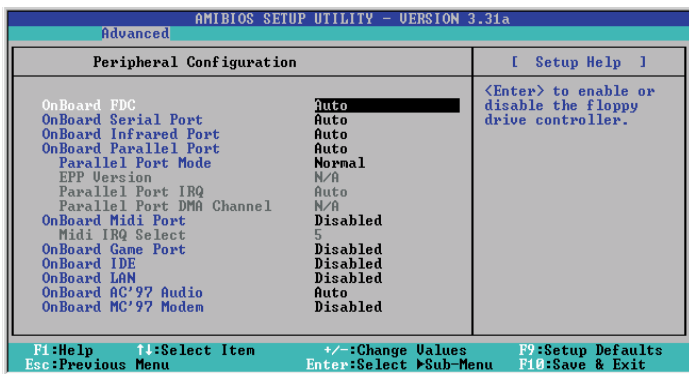
USB Device Legacy Support: Use this to enable or disable support to emulate legacy I/O devices such as mouse, keyboard,... etc.

Resource Configuration:

PCI Latency Timer (PCI Clocks): The default is 32. We recommend you to keep the default value unless your PCI expansion cards' specifications require other settings.

Primary Graphics Adapter: Select PCI, OnBoard VGA, or Add-on AGP as the primary graphics adapter.

Peripheral Configuration:



OnBoard FDC: Use this to enable or disable floppy drive controller.

OnBoard Serial Port: Use this to set addresses for the onboard serial ports or disable serial ports. Configuration options: [Auto], [Disabled], [3F8 / IRQ4 / COM1], [2F8 / IRQ3 / COM2], [3E8 / IRQ4 / COM3], [2E8 / IRQ3 / COM4].

OnBoard Infrared Port: This allows you to enable or disable the onboard infrared port feature. Select [Auto] will enable this feature if the infrared module is installed.

OnBoard Parallel Port: Select Parallel Port address or disable Parallel Port. Configuration options: [Auto], [Disabled], [378], [278].

Parallel Port Mode: Set the operation mode of the parallel port.

OnBoard Midi Port: Select address for Midi Port or disable Midi Port. Configuration options: [Disabled], [330], [300], [290], [292].

Midi IRQ Select: Use this to select Midi IRQ. Configuration options: [5], [10], [11]. The default is 5.

OnBoard Game Port: Select address for Game Port or disable Game Port.
Configuration options: [200h], [208h], [Disabled].

OnBoard IDE: To enable either the primary IDE channel or the secondary IDE channel, set to [Disabled] will disable the both.

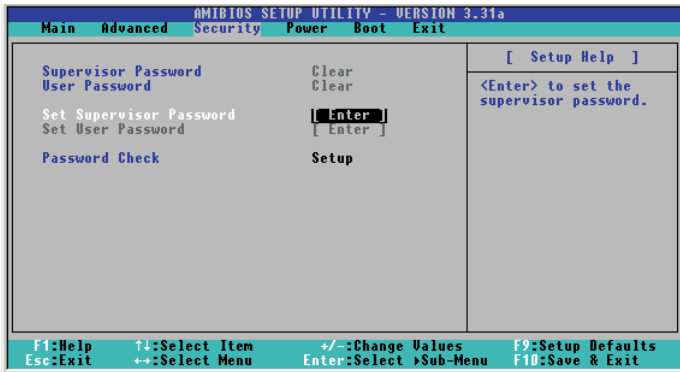
Configuration options: [both], [Disabled], [Primary], [Secondary].

OnBoard AC'97 Audio: Enable or disable onboard AC'97 audio feature.

OnBoard MC'97 Modem: Enable or disable onboard MC'97 modem feature.

System Hardware Monitor: You can check the status of the hardware on your system. It allows you to monitor the parameters for CPU temperature, Motherboard temperature, CPU fan speed, and critical voltage.

2. Security Setup Menu



Supervisor Password: This field shows the status of the Supervisor Password.

[Clear]: No password has been set.

[Set]: Supervisor password has been set.

User Password: This field shows the status of the User Password.

[Clear]: No password has been set.

[Set]: User password has been set.

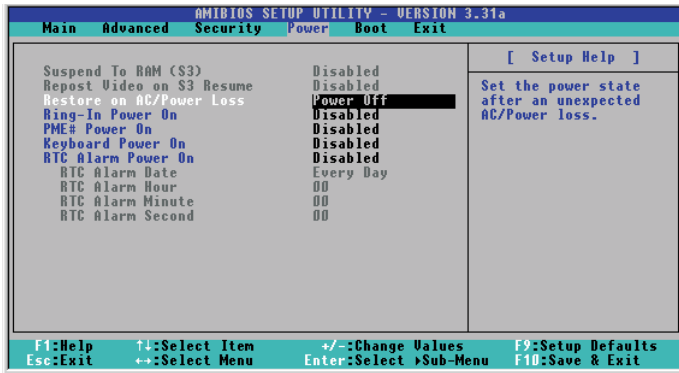
Set Supervisor Password: Press <Enter> to set Supervisor Password. Valid password can be a 1 to 6 alphanumeric characters combination. If you already have a password, you must enter your current password first in order to create a new password.

Set User Password: Press <Enter> to set User Password. Valid password can be a 1 to 6 alphanumeric characters combination. If you already have a password, you must enter your current password first in order to create a new password.

Password Check: Select the check point for "Password Check". Configuration options: [Setup], [Always]. If [Setup] option is selected, the "Password Check"

is performed before BIOS setup. If [Always] option is selected, the “Password Check” is performed before both boot-up and BIOS setup.

3. Power Setup Menu



Suspend to RAM (S3): This field allows you to select whether to auto-detect or disable the ACPI Suspend-to-RAM feature. Select [Auto] will enable this feature if the system supports it.

Repost Video on S3 Resume: This feature allows you to repost video on S3 resume.

Restore on AC/Power Loss: This allows you to set the power state after an unexpected AC power loss. If [Power Off] is selected, the AC power remains off when the power recovers. If [Power On] is selected, the AC power resumes and the system starts to boot up when the power recovers.

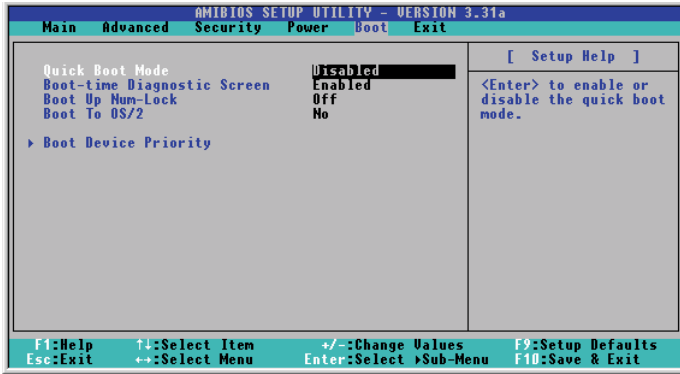
Ring-In Power On: Use this to enable or disable Ring-in signals to turn on the system from the power-soft-off mode.

PME# Power On: Use this to enable or disable PCI PME# to turn on the system from the power-soft-off mode.

Keyboard Power On: Use this to enable or disable keyboard to turn on the system from the power-soft-off mode.

RTC Alarm Power On: Use this to enable or disable RTC(Real Time Clock) to power on the system. If [Enable] is selected, you must fill the RTC Alarm Date / Hour / Minute / Second sub-fields with the actual wake up time you desire.

4. Boot Setup Menu



Quick Boot Mode: This mode speeds up the boot-up routine by skipping memory retestings.

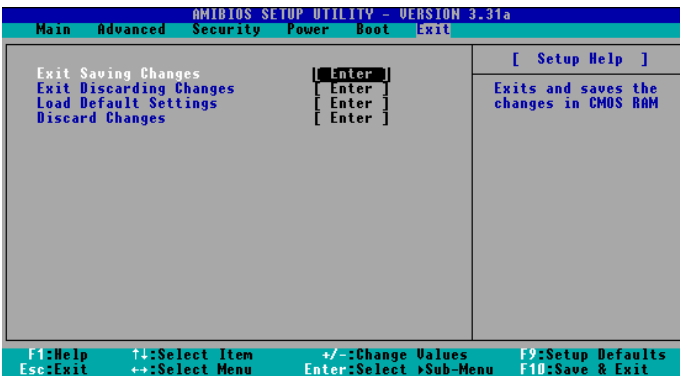
Boot-time Diagnostic Screen: This screen shows CPU and hardware information during Power-On-Self-Test (POST) routine. If this screen is disabled, only ASRock logo is shown during the boot up process.

Boot Up Num-Lock: This automatically activates the Numeric Lock function after boot up.

Boot to OS/2: This enables boot up to OS/2 operating system.

Boot Device Priority: This allows you to set the boot device priority.

5. Exit Menu



Exit Saving Changes: After you enter the sub-menu, the message “Save current settings and exit” will appear. If you press <ENTER>, it will save the current settings and exit the BIOS SETUP Utility.

Exit Discarding Changes: After you enter the submenu, the message “Quit without saving changes” will appear. If you press <ENTER>, you will exit the BIOS Setup Utility without making any changes to the settings.

Load Default Settings: This loads the default values for all the setup configuration.

Discard Changes: After you enter the sub-menu, the message “Load setup original values” will appear. If you press <ENTER>, original values will be restored. All changes are discarded.