



EP-6VBA

**A Pentium® II or Pentium® III
Slot1 Processor based AGP
mainboard (100/66MHz)
Supports PC-133 SDRAM Module**

TRADEMARK

All products and company names are trademarks or registered trademarks of their respective holders.

These specifications are subject to change without notice.

*Manual Revision 4.2
May 25, 1999*

Technical Support Services

If you need additional information, help during installation or normal use of this product, please contact your retailer. If your retailer can not help, you may E-Mail us with any questions at the following address tech@epox.com

Record your serial number before installing your EP-6VBA mainboard. (the serial number is located near the ISA slots at the edge of the board)

EPoX EP-6VBA serial number:

BIOS Upgrades

Please use either our Web Site or BBS for current BIOS Upgrades.

Internet Access

<http://www.epox.com>
<http://www.epox.com.tw>
sales@epox.com
tech@epox.com

Modem Access

886-2-2247-2742 (Taiwan)
31-182-618451 (The Netherlands)

You can access this number via a Hayes-compatible modem with a 2,400 to 28,800 baud rate. The following setup format is required:

8 Data Bits, No Parity, 1 Stop Bit.

If your modem is unable to connect at higher baud rates, try connecting at 2,400 baud before contacting Technical Support.

Thank you for using EPoX mainboards!

User Notice

No part of this product, including the product and software may be reproduced, transmitted, transcribed, stored in a retrieval system, or translated into any language in any form by any means without the express written permission of EPoX Computer Company (here in after referred to as EPoX) except documentation kept by the purchaser for backup purposes.

EPoX provides this manual “as is” without warranty of any kind, either express or implied, including but not limited to the implied warranties or conditions of merchantability or fitness for a particular purpose. In no event shall EPoX be liable for any loss or profits, loss of business, loss of use or data, interruption of business or for indirect, special incidental, or consequential damages of any kind, even if EPoX has been advised of the possibility of such damages arising from any defect or error in the manual or product. EPoX may review this manual from time to time without notice. For updated BIOS, drivers, or product release information you may visit EPoX’s home page at: <http://www.epox.com>

Products mentioned in this manual are mentioned for identification purposes only. Product names appearing in this manual may or may not be registered trademarks or copyrights of their respective companies.

The product name and revision number are both printed on the mainboard itself.

Handling Procedures

Static electricity can severely damage your equipment. Handle the EP-6VBA and any other device in your system with care and avoid unnecessary contact with system components on the mainboard.

Always work on an antistatic surface to avoid possible damage to the motherboard from static discharge.

We assume no responsibility for any damage to the EP-6VBA mainboard that results from failure to follow installation instructions or failure to observe safety precautions.



CAUTION



The EP-6VBA mainboard is subject to damage by static electricity. Always observe the handling procedures.

Table of Contents

Section 1 **Introduction**

Components Checklist	1-1
----------------------------	-----

Overview

Pentium® II or Pentium® III Processor	1-2
S.E.C. Cartridge Terminology	1-3
Accelerated Graphics Port	1-4
Hardware Monitoring	1-4
EP-6VBA Form-factor	1-5
I/O Shield Connector	1-6
Power-On/Off (Remote)	1-6
System Block Diagram	1-7

Section 2 **Features**

EP-6VBA Features	2-1
------------------------	-----

Section 3 **Installation**

EP-6VBA Detailed Layout	3-1
-------------------------------	-----

Easy Installation Procedure

Configure DIP Switch	3-3
System Memory Configuration	3-4
Installing a Pentium® II Processor	3-7
Device Connectors	3-9
External Modem Ring-in Power On and Keyboard Power On Function (KBPO)	3-11

Section 4 **Award BIOS Setup**

BIOS Instructions	4-1
Standard CMOS Setup	4-2
BIOS Features Setup	4-3
Chipset Features Setup	4-8

Power Management Setup	4-11
PNP/PCI Configuration	4-15
Load Setup Defaults	4-17
Integrated Peripherals	4-17
Sensor and CPU Speed Setup	4-22
Change Supervisor or User Password	4-24
IDE HDD Auto Detection	4-25
HDD Low Level Format	4-27
Save & Exit Setup	4-27
Exit Without Saving	4-27

Section 5 Appendix

Appendix A

Memory Map	A-1
I/O Map	A-1
Timer & DMA Channels Map	A-2
Interrupt Map	A-2
RTC & CMOS RAM Map	A-3

Appendix B

POST Codes	A-5
Unexpected Errors	A-8

Appendix C

Load Setup Defaults	A-9
---------------------------	-----

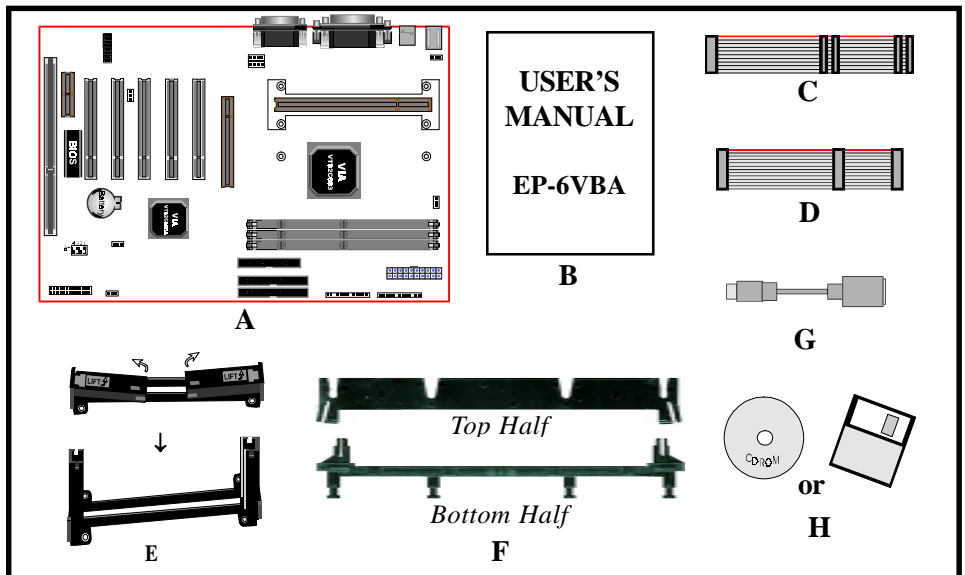
Appendix D

Sound Driver Quick Installation Guide	A-11
AGP Driver Quick Installation Guide	A-13

Section 1
INTRODUCTION

Components Checklist

- ✓ A. (1) EP-6VBA mainboard
- ✓ B. (1) EP-6VBA user's manual
- ✓ C. (1) Floppy ribbon cable
- ✓ D. (1) Hard drive ribbon cables
- ✓ E. (1) Foldable Retention Module
- F. (1) Heatsink Support Unit (Optional)
- G. (1) PS/2 to AT keyboard connector adapter (optional)
- ✓ H. (1) Driver and utility



Pentium® II or Pentium® III Processor

The Pentium® II or Pentium® III Processor is the follow-on to the Pentium® Processor. The Pentium® II or Pentium® III Processor, like the Pentium® Pro processor, implements a Dynamic Execution micro-architecture -- a unique combination of multiple branch prediction, data flow analysis, and speculative execution. This enables the Pentium® II Processor to deliver higher performance than the Pentium® processor, while maintaining binary compatibility with all previous Intel architecture processors.

A significant feature of the Pentium® II or Pentium® III Processor, from a system perspective, is the built-in direct multiprocessing support. In order to achieve multiprocessing, and maintain the memory and I/O bandwidth to support it, new system designs are needed. For systems with dual processors, it is important to consider the additional power burdens and signal integrity issues of supporting multiple loads on a high speed bus. The Pentium® II or Pentium® III Processor can supports both uni-processor and dual processor implementations.

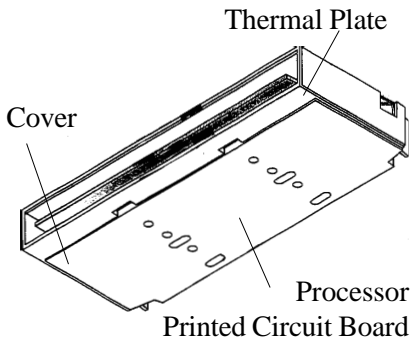
The Pentium® II or Pentium® III Processor utilizes Single Edge Contact (S.E.C.) (Figure 1) cartridge packaging technology. The S.E.C. cartridge allows the L2 cache to remain tightly coupled to the processor, while maintaining flexibility when implementing high performance processors into OEM systems. The second level cache is performance optimized and tested at the cartridge level. The S.E.C. cartridge utilizes surface mounted core components and a printed circuit board with an edge finger connection. The S.E.C. cartridge package introduced on the Pentium® II Processor will also be used in future Slot 1 processors.

The S.E.C. cartridge has the following features: a thermal plate, a cover and a PCB with an edge finger connection. The thermal plate allows standardized heatsink attachment or customized thermal solutions. The thermal plate enables a reusable heatsink to minimize fit issues for serviceability, upgradeability and replacement. The full enclosure also protects the surface mount components. The edge finger connection maintains socketability for system configuration. The edge finger connector is denoted as 'Slot 1 connector' in this and other documentation.

The entire enclosed product is called the Pentium® II or Pentium® III Processor. The packaging technology and each of the physical elements of the product are referred to using accurate technical descriptions. This allows clear reference to the products as just a processor. This is the model used in past packaging technologies like PGA, TCP, PQFP, DIP, etc.

S.E.C. Cartridge Terminology

- Pentium® II or Pentium® III Processor
The new enclosed card packaging technology is called a “Single Edge Contact cartridge.” This is similar to previous names for packaging technology such as PGA or TCP.
- Processor card
The green PCB (with or without components on it)
- Processor core
The silicon on the PLGA package on the PCB
- Cover
The plastic cover on the opposite side from the thermal plate.
- Slot 1
The slot that the S.E.C. cartridge plugs into, just as the Pentium® Pro processor uses Socket 8.
- Retention mechanism
Formerly ‘retention module’ the dual posts, etc. that holds the cartridge in place.
- Thermal plate
The heatsink attachment plate.
- Heat sink supports
The support pieces that are mounted on the mainboard to provide added support for heatsinks.



*Figure 1:
Pentium® II or Pentium® III Processor
CPU with S.E.C. Cartridge*

The L2 cache (TagRAM, PBSRAM) components keep standard industry names.

The Pentium® II or Pentium® III Processor is the first product to utilize the S.E. C. cartridge technology and Slot 1 connector. Unless otherwise noted, any references to “Pentium® II Processor,”

“Pentium® II or Pentium® III Processor/Slot 1 processor” or “Pentium® III Processor” will apply to both the Pentium® II Processor desktop processors.

Accelerated Graphics Port (AGP or A.G.P.)

Typically, 3D graphics rendering requires a tremendous amount of memory, and demands ever increasing throughput speed as well. As 3D products for the personal computer become more and more popular, these demands will only increase. This will cause a rise in costs for both end users and manufacturers. Lowering these costs as well as improving performance is the primary motivation behind AGP. By providing a massive increase in the bandwidth available between the video card and the processor, it will assist in relieving some of these pressures for quite sometime.

Hardware Monitoring

Hardware monitoring allows you to monitor various aspects of your systems operations and status. The features include CPU temperature, voltage and RPM of fan.

EP-6VBA Form-Factor

The EP-6VBA is designed with ATX form factor - the new industry standard of chassis. ATX form factor is essentially a Baby-AT baseboard rotated 90 degrees within the chassis enclosure and a new mounting configuration for the power supply. With these changes the processor is relocated away from the expansion slots, allowing them all to hold full length add-in cards. ATX defines a double height aperture to the rear of the chassis which can be used to host a wide range of onboard I/O. Only the size and position of this aperture is defined, allowing PC manufacturers to add new I/O features (e.g.; TV input, TV output, joystick, modem, LAN, etc.) to systems. This will help systems integrators differentiate their products in the marketplace, and better meet your needs.

- By integrating more I/O down onto the board and better positioning the hard drive and floppy connectors material cost of cables and add-in cards is reduced.
- By reducing the number of cables and components in the system, manufacturing time and inventory holding costs are reduced and reliability will increase.
- By using an optimized power supply, it's possible to reduce cooling costs and lower acoustical noise. An ATX power supply, which has a side-mounted fan, allows direct cooling of the processor and add-in cards making a secondary fan or active heatsink unnecessary in most system applications.

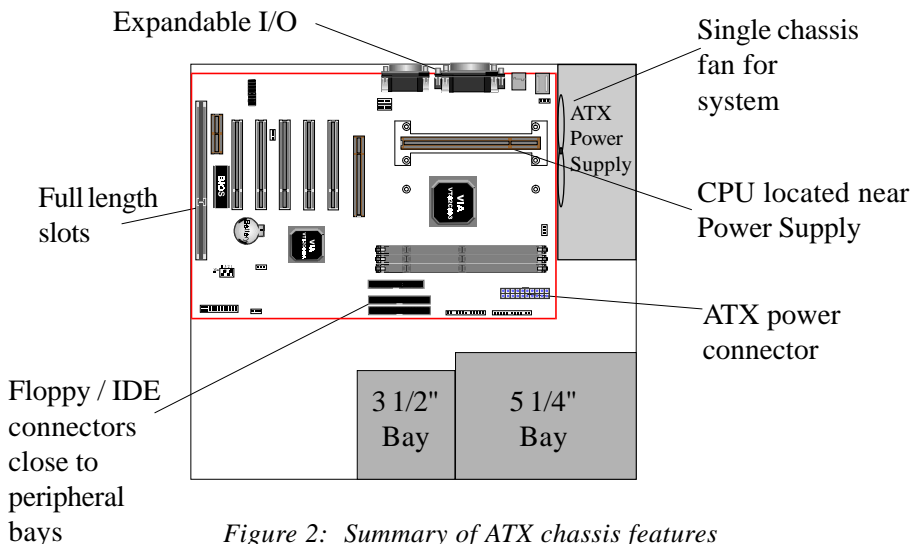


Figure 2: Summary of ATX chassis features

I/O Shield Connector

The EP-6VBA is equipped with an I/O back panel. Please use the appropriate I/O shield (figure 3).

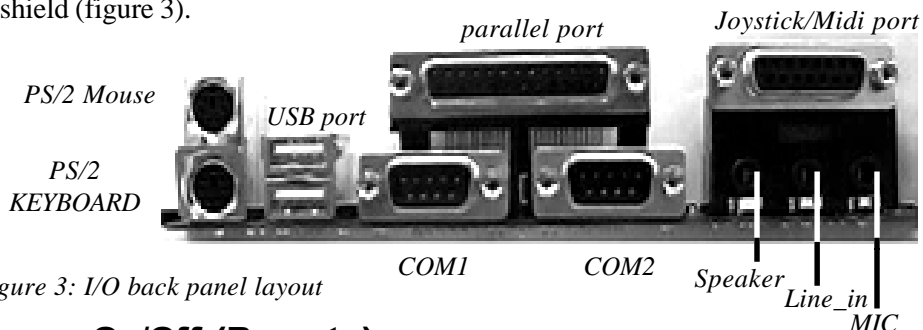


Figure 3: I/O back panel layout

Power-On/Off (Remote)

The EP-6VBA has a single 20-pin connector for ATX power supplies. For ATX power supplies that support the **Remote On/Off** feature, this should be connected to the systems front panel for system Power On/Off button. The systems power On/Off button should be a momentary button that is normally open.

The EP-6VBA has been designed with "Soft Off" functions. You can turn Off the system from one of two sources: The first is the front panel Power On/Off button, and the other is the "Soft Off" function (coming from the EP-6VBA's onboard circuit controller) that can be controlled by the operating system. Windows 95 will control this when the user clicks that they are ready to Shutdown the system.

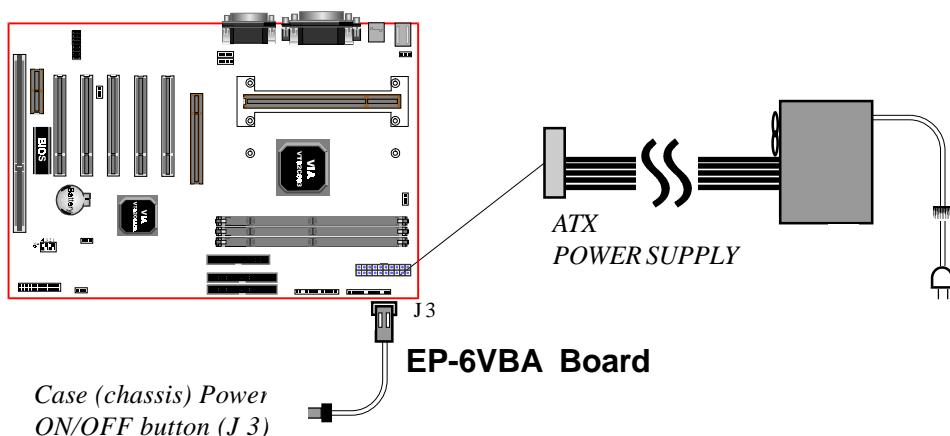


Figure 4: Simple ATX Power ON/OFF Controller

System Block Diagram

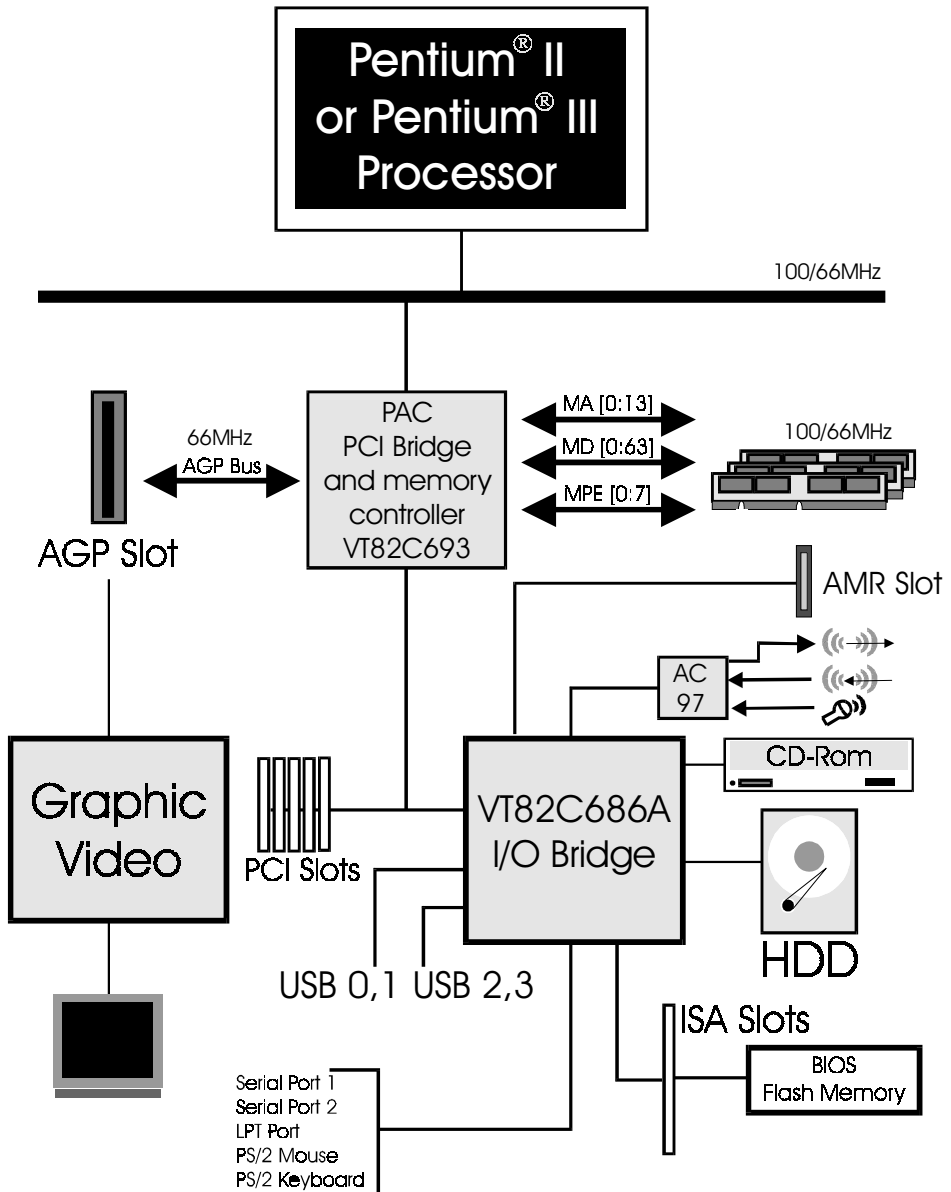


Figure 5: System Block Diagram

Page Left Blank

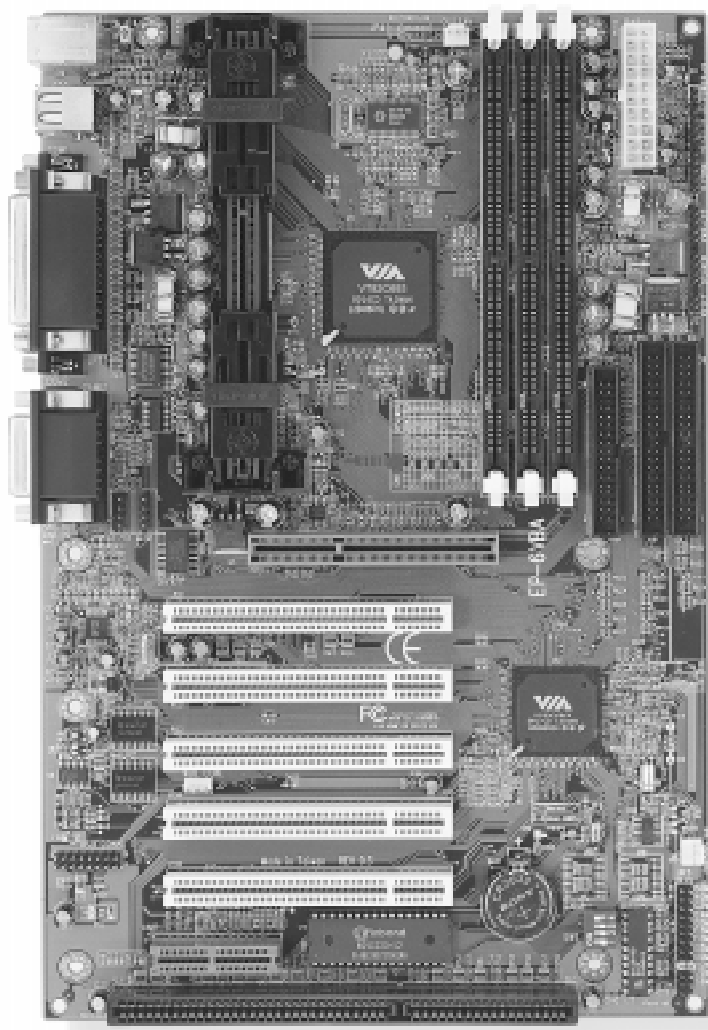
Section 2 FEATURES

EP-6VBA Features:

- EP-6VBA is based on the Pentium® II/III Processor operating at 266 ~ 550MHz on Slot1. The board is configured by an ESSJ (Easy-Setting-Single-Jumper) to match your CPU clock speed.
- Designed with VIA Apollo Pro PCIset.
- Supports up to 768MB of DRAM (minimum of 8 MB) on board (please see Section 3-2).
- EP-6VBA will support Error Checking and Correcting (ECC) when using parity SDRAM memory modules. This will detect multiple bit errors and correct 1-bit memory errors.
- Supports (1) 16 bit ISA slots, (5) 32 bit PCI slots, (1) AGP slot, (1) AMR slot and provides (2) independent high performance PCI IDE interfaces capable of supporting PIO Mode 3/4 and Ultra DMA 33/66 devices. The EP-6VBA supports (5) PCI Bus Master slots and a jumperless PCI INT# control scheme which reduces configuration confusion when plugging in PCI card(s).
- Supports ATAPI (e.g. CD-ROM) devices on both Primary and Secondary IDE interfaces.
- Designed with on chip Multi I/O: (1) floppy port, (1) parallel port (EPP, ECP), and (2) serial ports (16550 Fast UART).
Note: Japanese "Floppy 3 mode" is also supported
- Features Award Plug & Play BIOS. With Flash Memory you can always upgrade to the current BIOS as they are released. (<http://www.epox.com>/ please visit our Technical Support section for the latest updates)
- EP-6VBA utilizes a Lithium battery which provides environmental protection and longer battery life.

- Supports the (4) Universal Serial Bus (USB) Ports. The onboard VT82C686A chip provides the means for connecting PC peripherals such as; keyboards, joysticks, telephones, and modems.
- Built-in ATX 20-pin power supply connector.
- Software power-down when using Windows® 95/98.
- Supports ring-in feature (remote power-on through external modem, allows system to be turned on remotely.
- Resume by Alarm - Allows your system to turn on at a preselected time.
- Power Loss Recovery - In the event of a power outage your system will automatically turn itself back on without user intervention.
- Supports CPU Hardware sleep and SMM (System Management Mode).
- Supports Keyboard power ON function (KBPO).
- Built-in WOL (Wake-up On Lan) Connector.
- Built-in AC97 PCI Audio.

Section 3 INSTALLATION



EP-6VBA Detailed Layout

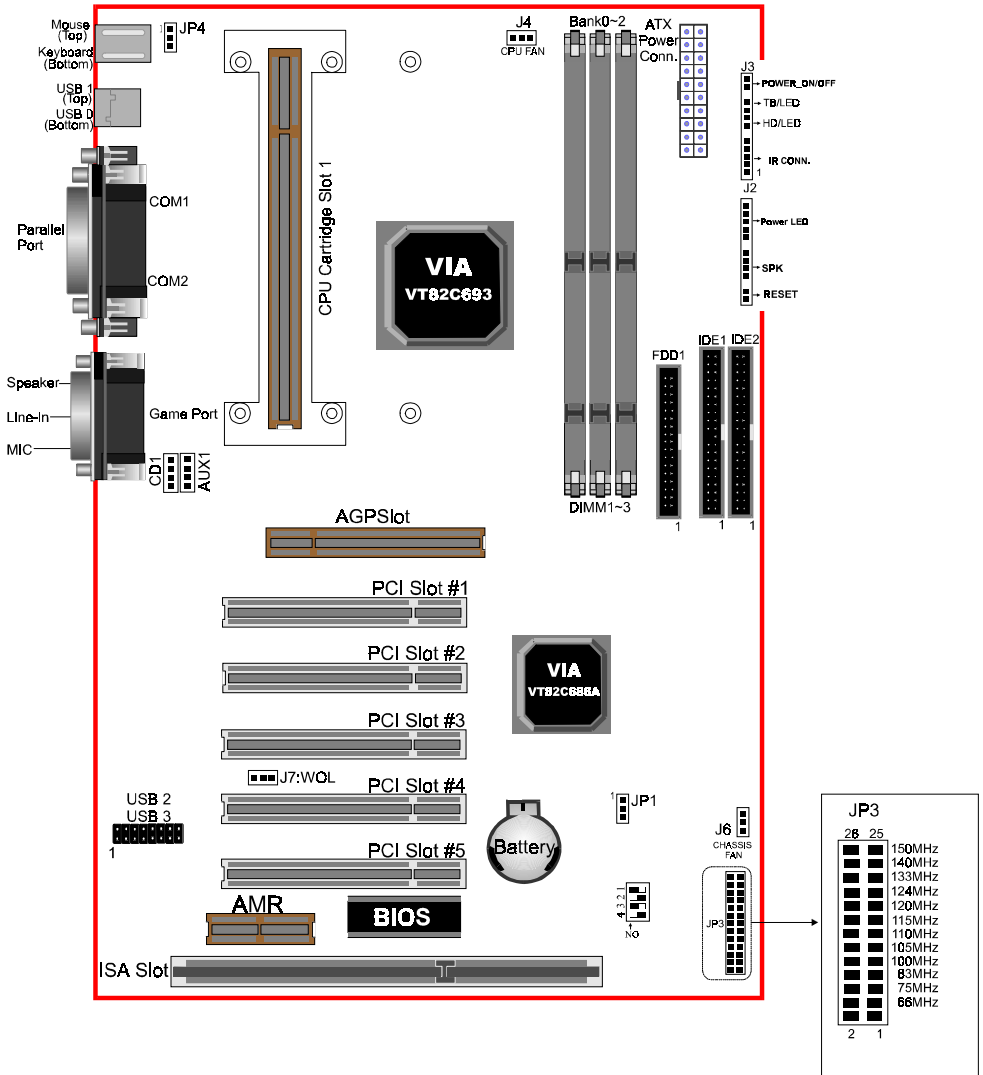


Figure 1

Easy Installation Procedure

Easy Installation Procedure

The following must be completed before powering on your new system:

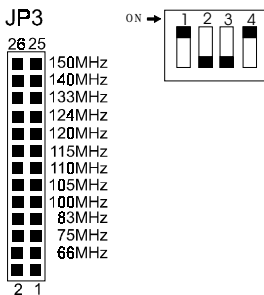
- 3-1. Configure DIP Switch and Jumper to match your hardware
- 3-2. System memory Configuration
- 3-3. Install Pentium II or Pentium III Processor
- 3-4. Device Connectors
- 3-5 External Modem Ring-in Power ON and Keyboard Power ON Functions (KBPO)

Section 3-1 Configure DIP Switch

We design this motherboard with a DIP Switch to make your install fast and easy.

The following will describe all of the DIP Switch that you are required to set before moving on to step 3-2.

Note: The DIP Switch as depicted as shown (Figure 1) in their correct physical orientation.



SW1				CPU(MHz)		
1	2	3	4	Ratio	66MHz	100MHz
ON		ON	ON	3X	200	300
ON			ON	3.5X	233	350
	ON	ON	ON	4X	266	400
	ON		ON	4.5X	300	450
		ON	ON	5X	333	500
			ON	5.5X	366	*550
ON	ON	ON		6X	400	*600
ON	ON			6.5X	433	*650
ON		ON		7X	*466	*700
ON				7.5X	*500	*750
	ON	ON		8X	*533	*800

*reserved

JP1 1 *Clear COMS*
 1-2 : Run Mode(default)
 2-3 : Clear CMOS

JP4 1 *Keyboard Power-ON Function Selection*
 1-2 : Disabled
 2-3 : Enabled

Section 3-2 System Memory Configuration

Memory Layout

The EP-6VBA supports (3) 168-pin DIMMs (Dual In-line Memory Module). The DIMMs can be either EDO (Enhanced Data Out) or SDRAM (Synchronized DRAM).

- DIMM SDRAM may be 83MHz (12ns), 100MHz (10ns) or 125MHz (8ns) bus speed.
- If you use both 50ns and 60ns memory you must configure your BIOS to read 60ns.
- When using Synchronous DRAM we recommend using the 4 clock variety over the 2 clock.

Figure 2 and Table 1 show several possible memory configurations using both SIMM and DIMM.

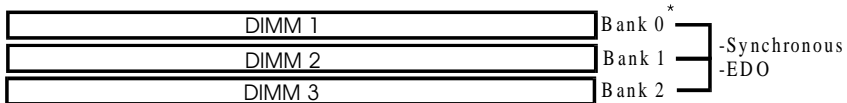


Figure 2

Total Memory	DIMM 1 (Bank 0)	DIMM 2 (Bank 1)	DIMM 3 (Bank 2)
= 256MB Maximum	EDO/SDRAM* 8MB, 16MB, 32MB, 64MB, 128MB, 256MB X 1	None	None
= 512MB Maximum	EDO/SDRAM* 8MB, 16MB, 32MB, 64MB, 128MB, 256MB X 1	EDO/SDRAM* 8MB, 16MB, 32MB, 64MB, 128MB, 256MB X 1	None
= 768MB Maximum	EDO/SDRAM* 8MB, 16MB, 32MB, 64MB, 128MB, 256MB X 1	EDO/SDRAM* 8MB, 16MB, 32MB, 64MB, 128MB, 256MB X 1	EDO/SDRAM* 8MB, 16MB, 32MB, 64MB, 128MB, 256MB X 1

* SDRAM only supports 8, 16, 32, 64, 128, 256MB DIMM modules.

Table 1

DIMM Module Installation

Figure 3 displays the notch marks and what they should look like on your DIMM memory module.

DIMMs have 168-pins and two notches that will match with the onboard DIMM socket. DIMM modules are installed by placing the chip firmly into the socket at a 90 degree angle and pressing straight down (figure 4) until it fits tightly into the DIMM socket (figure 5).

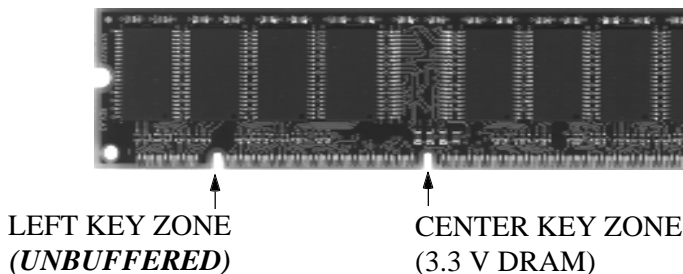


Figure 3

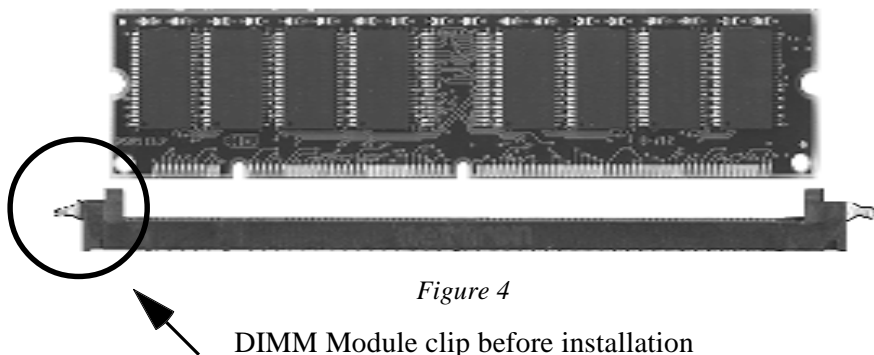


Figure 4

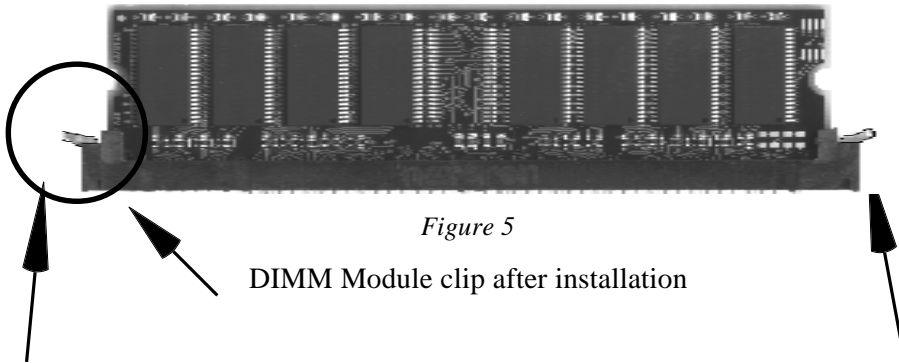


Figure 5

DIMM Module clip after installation

To remove the DIMM module simply press down both of the white clips on either side and the module will be released from the socket.

Section 3-3

Installing a Pentium II or Pentium III Processor

The EP-6VBA uses the Single Edge Contact (SEC) slot for a Pentium® II processor packaged in an SEC cartridge. The SEC slot is not compatible with other non-Pentium II processors.

Please have ready the following list of components so that we may install the processor onto the motherboard.

1. Heat sink support (top/bottom piece)
2. Pentium® II processor heat sink
3. Intel Pentium II Processor

OK, now that you have all of your components ready, we can start.

- 1 First, please refer to figure 6 below, and follow the direction to lift up the fixed foldable pentium® II Retention Mechanism. This pre-installed device is designed for you to install Pentium® II CPU more easier and to avoid any damage on the board due to overtightening the four screws.
- 2 One thing must be kept in your mind that please make sure to lift upright the foldable parts of the Retention module to fit and install CPU properly.



Figure 6

Now we are going to install the heatsink support base piece (figure 7) onto the motherboard. There is both a large and small hole (figure 8) so that the base will only fit in one direction. This piece needs to be pushed into the holes firmly until it is seated.

Now we are ready to install the SEC Cartridge (Pentium® II Processor) into the Retention Module. The SEC Cartridge is mounted by sliding the SEC Cartridge into the Retention Module and letting it slide all the way down. Once it reaches the bottom make sure you press firmly on SEC cartridge to firmly secure into the Slot 1 Socket.

Now we need to secure the heatsink with the top half of the support (figure 9). Take the top piece of the support and slide it into the bottom fin (figure 9) on the heatsink and then push forward until it clips into the bottom base (figure 7) that is already there (figure 9).

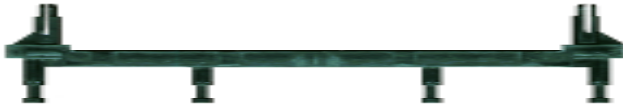


Figure 7

Figure 7 shows the layout of Slot 1 and the holes for mounting the Heatsink base piece (figure 6).

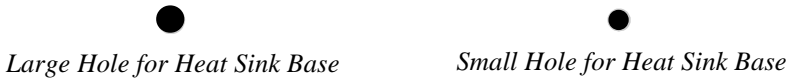
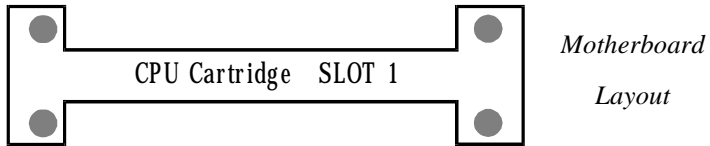
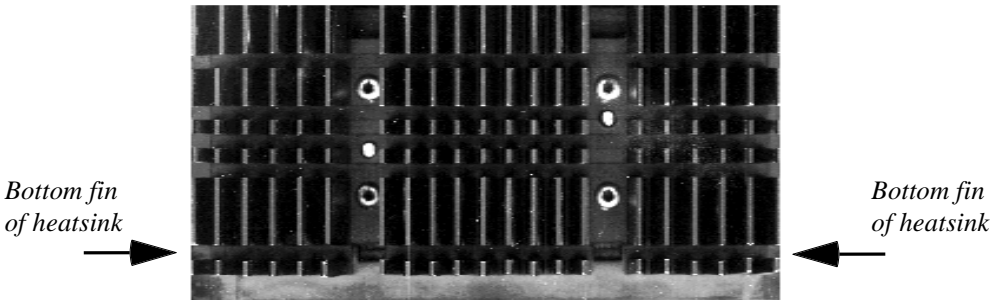


Figure 8



Top half of the support

Figure 9

Section 3-4

Device Connectors

Please install the motherboard into the chassis.

Now that your motherboard is installed you are ready to connect all your connections (figure 10).

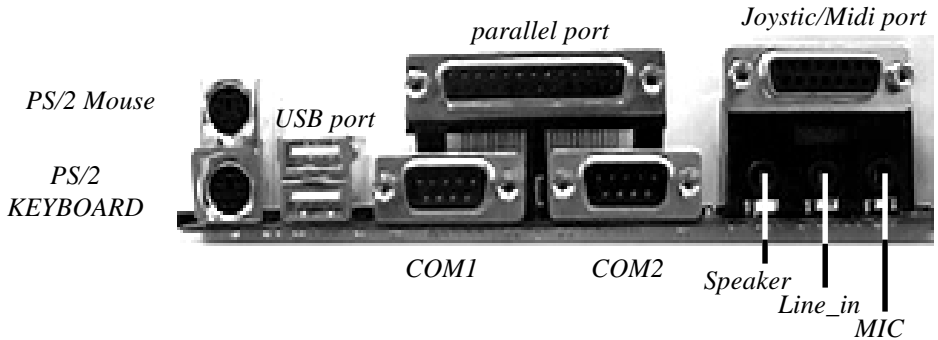
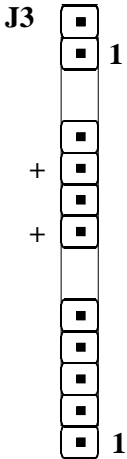


Figure 10

- J2:** Chassis Panel Connector
- Power LED, Speaker, Reset
- J3:** Turbo LED, HDD LED, IR Conn., Sleep/Power_ON
- J4:** CPU Fan Power
- A plug-in for the CPU Fan Power
- J6:** Chassis Fan Power
- A plug-in for the chassis Fan Power
- J7:** WOL (Wake On Lan) Connector
- IDE1:** Primary IDE
- IDE2:** Secondary IDE
- FDD1:** Floppy Controller Connector
- PW1:** ATX Power Connector
- 20-pin power connector
- CD1:** CD Audio Connector
- AUX1:** AUX Audio Connector

Device Connectors (continued)

(This is connected to the power button on the case. Using the Soft-Off by Pwr-BTTN feature, you can choose either Instant Off (turns system off immediatly), or 4 sec delay (you need to hold the button down for 4 seconds before the system turns off). When the system is in 4 sec delay mode, there is a special feature to make the system to go into suspend mode when the button is pressed momentarily.)



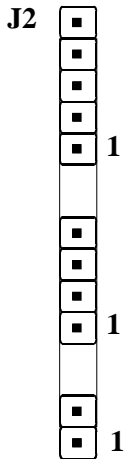
Power On/Off

Turbo LED indicator - LED ON when higher speed is selected

IDE LED indicator - LED ON when Onboard PCI IDE Hard disks is activate

IR Connector

- | | |
|---------|---------|
| 1. VCC | 4. GND |
| 2. NC | 5. IRTX |
| 3. IRRX | |



Power LED - Power LED connector

- | | |
|-----------------|--------|
| 1. Power LED(+) | 4. NC |
| 2. N/C | 5. GND |
| 3. GND | |

Speaker - Connect to the system's speaker for beeping

- | | |
|------------|--------|
| 1. Speaker | 3. GND |
| 2. N/C | 4. GND |

Reset - Closed to restart system.

Section 3-5

External Modem Ring-in Power ON and Keyboard Power ON Functions (KBPO)


On the basis of bounded functions in I/O chipset, the two serial ports are able to support the External Modem Ring-in Power ON function. Once users connect the external modem to COM1 or COM2, the EP-6VBA mainboard allows users to turn on their system through the remote and host's dial-up control.

Exclusive Keyboard Power ON Function

To innovate a unique feature to benefit users, we devoted the easiest and most convenient way to turn on your system based on the the ATX power supply.

How to work with it

Step 1: Please check JP4 at the position 2-3 after you finished the system installation.

JP4  1 *Keyboard Power-ON Function Selection*
1-2 : Disabled (Default)
2-3 : Enabled

Step 2: You can enjoy the Keyboard Power ON function (KBPO) by *pressing any 2 key and BUTTON only to turn on your system*. Your system will be turned on automatically, after releasing the keys. To power off you system, you can use the Soft-OFF function under Windows 95.

Notes: Intel ATX version 2.0 specification has recommended you use the power supply with 0.72A(720mA) in 5.0VSB. With our EP-6VBA mainboard, *the 5.0VSB standby power only has to be $\geq 0.2A$ (200mA)* then you can enjoy this unique benefit. However, the ATX power supply which is < 0.2 (200mA) is still applicable to your system by placed JP4 at the position 1-2 to disable this feature.

Page Left Blank

Section 4

AWARD BIOS SETUP

BIOS Instructions

Award’s ROM BIOS provides a built-in Setup program which allows user to modify the basic system configuration and hardware parameters. The modified data will be stored in a battery-backed CMOS, so that data will be retained even when the power is turned off. In general, the information saved in the CMOS RAM will stay unchanged unless there is a configuration change in the system, such as hard drive replacement or a device is added.

It is possible for the CMOS battery to fail, this will cause data loss in the CMOS only. If this does happen you will need to reconfigure your BIOS settings.

To enter the Setup Program :

Power on the computer and press the key immediately, this will bring you into the BIOS CMOS SETUP UTILITY.

ROM PCI / ISA BIOS (2A6LGPA)A
 CMOS SETUP UTILITY
 AWARD SOFTWARE, INC.

STANDARD CMOS SETUP BIOS FEATURES SETUP CHIPSET FEATURES SETUP POWER MANAGEMENT SETUP PNP/PCI CONFIGURATION INTEGRATED PERIPHERALS LOAD SETUP DEFAULTS	SENSOR AND CPU SPEED SETUP SUPERVISOR PASSWORD USER PASSWORD IDE HDD AUTO DETECTION SAVE & EXIT SETUP EXIT WITHOUT SAVING
ESC : QUIT F10 : Save & Exit Setup	↑ ↓ → ← : SELECT ITEM (Shift)F2 : Change Color
Time, Date, Hard Disk Type...	

Figure 1: CMOS Setup Utility

The menu displays all the major selection items. Select the item you need to reconfigure. The selection is made by moving the cursor (press any direction key) to the item and pressing the ‘Enter’ key. An on-line help message is displayed at the bottom of the screen as the cursor is moved to various items which provides a better understanding of each function. When a selection is made, the menu of the selected item will appear so that the user can modify associated configuration parameters.

4-1 Standard CMOS Setup

Choose “Standard CMOS Setup” in the CMOS SETUP UTILITY Menu (Figure 2). The Standard CMOS Setup allows the user to configure system settings such as the current date and time, type of hard disk drive installed, floppy drive type, and display type. Memory size is auto-detected by the BIOS and displayed for your reference. When a field is highlighted (use direction keys to move the cursor and the <Enter> key to select), the entries in the field can be changed by pressing the <PgDn> or the <PgUp> key.

ROM PCI/ISA BIOS(2A6LGPAA)
 STANDARD CMOS SETUP
 AWARD SOFTWARE, INC.

Date (mm:dd:yy) : Wed, Apr 17 1996																							
Time (hh:mm:ss) : 14 : 30 : 50																							
HARD DISKS	TYPE	SIZE	CYLS	HEAD	PRECOMP	LANDZONE	SECTORS	MODE															
Primary Master	: Auto	0	0	0	0	0	0	Auto															
Primary Slave	: Auto	0	0	0	0	0	0	Auto															
Secondary Master	: Auto	0	0	0	0	0	0	Auto															
Secondary Slave	: Auto	0	0	0	0	0	0	Auto															
Drive A : 1.44M, 3.5 in.																							
Drive B : None																							
Video : EGA/VGA																							
Halt On : All, But Keyboard																							
		<table border="1"> <tr> <td>Base Memory</td> <td>:</td> <td>640K</td> </tr> <tr> <td>Extended Memory</td> <td>:</td> <td>392192K</td> </tr> <tr> <td>Other Memory</td> <td>:</td> <td>384K</td> </tr> <tr> <td colspan="3"><hr/></td> </tr> <tr> <td>Total Memory</td> <td>:</td> <td>393216K</td> </tr> </table>							Base Memory	:	640K	Extended Memory	:	392192K	Other Memory	:	384K	<hr/>			Total Memory	:	393216K
Base Memory	:	640K																					
Extended Memory	:	392192K																					
Other Memory	:	384K																					
<hr/>																							
Total Memory	:	393216K																					
ESC : Quit			↑ ↓ → ← : Select Item			PU/PD/+/- : Modify																	
F1 : Help			(Shift) F2 : Change Color																				

Figure 2: Standard CMOS Setup

Note: If the hard disk Primary Master/Slave and Secondary Master/Slave are set to Auto, then the hard disk size and model will be auto-detected.

Note: The “Halt On:” field is used to determine when to halt the system by the BIOS if an error occurs.

Note: Floppy 3 Mode support is a mode used to support a special 3.5” drive used in Japan. This is a 3.5” disk that stores only 1.2 MB, the default setting for this is disabled.

4-2 BIOS Features Setup

Selecting the “BIOS FEATURES SETUP” option in the CMOS SETUP UTILITY menu allows users to change system related parameters in the displayed menu. This menu shows all of the manufacturer’s default values for the EP-6VBA.

Pressing the [F1] key will display a help message for the selected item.

ROM PCI/ISA BIOS(2A6LGPAA)
 BIOS FEATURES SETUP
 AWARD SOFTWARE, INC.

<table style="width: 100%; border-collapse: collapse;"> <tr><td>Virus Warning</td><td>: Disabled</td></tr> <tr><td>CPU Internal Cache</td><td>: Enabled</td></tr> <tr><td>External Cache</td><td>: Enabled</td></tr> <tr><td>CPU L2 Cache ECC Checking</td><td>: Disabled</td></tr> <tr><td colspan="2"> </td></tr> <tr><td>Quick Power On Self Test</td><td>: Enabled</td></tr> <tr><td>Boot Sequence</td><td>: A, C, SCSI</td></tr> <tr><td>Swap Floppy Drive</td><td>: Disabled</td></tr> <tr><td>Boot Up Floppy Seek</td><td>: Enabled</td></tr> <tr><td>Boot Up NumLock Status</td><td>: On</td></tr> <tr><td>IDE HDD Block Mode</td><td>: Enabled</td></tr> <tr><td>Gate A20 option</td><td>: Fast</td></tr> <tr><td>Memory Parity/ECC Check</td><td>: Disabled</td></tr> <tr><td>Typematic Rate Setting</td><td>: Disabled</td></tr> <tr><td>Typematic Rate (Chars/Sec)</td><td>: 6</td></tr> <tr><td>Type matic Delay (Msec)</td><td>: 250</td></tr> <tr><td>Security Option</td><td>: Setup</td></tr> <tr><td>PCI/VGA Palette Snoop</td><td>: Disabled</td></tr> <tr><td>OS Select For DRAM > 64MB</td><td>: Non-OS2</td></tr> </table>	Virus Warning	: Disabled	CPU Internal Cache	: Enabled	External Cache	: Enabled	CPU L2 Cache ECC Checking	: Disabled			Quick Power On Self Test	: Enabled	Boot Sequence	: A, C, SCSI	Swap Floppy Drive	: Disabled	Boot Up Floppy Seek	: Enabled	Boot Up NumLock Status	: On	IDE HDD Block Mode	: Enabled	Gate A20 option	: Fast	Memory Parity/ECC Check	: Disabled	Typematic Rate Setting	: Disabled	Typematic Rate (Chars/Sec)	: 6	Type matic Delay (Msec)	: 250	Security Option	: Setup	PCI/VGA Palette Snoop	: Disabled	OS Select For DRAM > 64MB	: Non-OS2	<table style="width: 100%; border-collapse: collapse;"> <tr><td>Video BIOS Shadow</td><td>: Enabled</td></tr> <tr><td>C8000-CBFFF Shadow</td><td>: Disabled</td></tr> <tr><td>CC000-CFFFF Shadow</td><td>: Disabled</td></tr> <tr><td>D0000-D3FFF Shadow</td><td>: Disabled</td></tr> <tr><td>D4000-D7FFF Shadow</td><td>: Disabled</td></tr> <tr><td>D8000-DBFFF Shadow</td><td>: Disabled</td></tr> <tr><td>DC000-DFFFF Shadow</td><td>: Disabled</td></tr> <tr><td colspan="2"> </td></tr> <tr> <td>Esc : Quit</td> <td style="text-align: right;">↑ ↓ → ← : Select Item</td> </tr> <tr> <td>F1 : Help</td> <td style="text-align: right;">PU/PD/+/- : Modify</td> </tr> <tr> <td>F5 : Old Values</td> <td style="text-align: right;">(Shift) F2 : Color</td> </tr> <tr> <td>F7 : Load Setup Defaults</td> <td></td> </tr> </table>	Video BIOS Shadow	: Enabled	C8000-CBFFF Shadow	: Disabled	CC000-CFFFF Shadow	: Disabled	D0000-D3FFF Shadow	: Disabled	D4000-D7FFF Shadow	: Disabled	D8000-DBFFF Shadow	: Disabled	DC000-DFFFF Shadow	: Disabled			Esc : Quit	↑ ↓ → ← : Select Item	F1 : Help	PU/PD/+/- : Modify	F5 : Old Values	(Shift) F2 : Color	F7 : Load Setup Defaults	
Virus Warning	: Disabled																																																														
CPU Internal Cache	: Enabled																																																														
External Cache	: Enabled																																																														
CPU L2 Cache ECC Checking	: Disabled																																																														
Quick Power On Self Test	: Enabled																																																														
Boot Sequence	: A, C, SCSI																																																														
Swap Floppy Drive	: Disabled																																																														
Boot Up Floppy Seek	: Enabled																																																														
Boot Up NumLock Status	: On																																																														
IDE HDD Block Mode	: Enabled																																																														
Gate A20 option	: Fast																																																														
Memory Parity/ECC Check	: Disabled																																																														
Typematic Rate Setting	: Disabled																																																														
Typematic Rate (Chars/Sec)	: 6																																																														
Type matic Delay (Msec)	: 250																																																														
Security Option	: Setup																																																														
PCI/VGA Palette Snoop	: Disabled																																																														
OS Select For DRAM > 64MB	: Non-OS2																																																														
Video BIOS Shadow	: Enabled																																																														
C8000-CBFFF Shadow	: Disabled																																																														
CC000-CFFFF Shadow	: Disabled																																																														
D0000-D3FFF Shadow	: Disabled																																																														
D4000-D7FFF Shadow	: Disabled																																																														
D8000-DBFFF Shadow	: Disabled																																																														
DC000-DFFFF Shadow	: Disabled																																																														
Esc : Quit	↑ ↓ → ← : Select Item																																																														
F1 : Help	PU/PD/+/- : Modify																																																														
F5 : Old Values	(Shift) F2 : Color																																																														
F7 : Load Setup Defaults																																																															

Figure 3: BIOS Features Setup

Virus Warning:

During and after the system boots up, any attempt to write to the boot sector or partition table of the hard disk drive will halt the system and an error message will appear.

You should then run an anti-virus program to locate the virus. Keep in mind that this feature protects only the boot sector, not the entire hard drive. The default value is Disabled.

Enabled: *Activates automatically when the system boots up causing a warning message to appear when anything attempts to access the boot sector.*

Disabled: *No warning message will appear when anything attempts to access the boot sector.*

Note: *Many disk diagnostic programs that access the boot sector table can trigger the virus warning message. If you plan to run such a program, we recommend that you first disable the virus warning.*

CPU Internal Cache:

This controls the status of the processor's internal cache area. The default is Enabled.

Enabled: *This activates the processor's internal cache thereby increasing performance.*

Disabled: *This deactivates the processor's internal cache thereby lowering performance.*

External (L2) Cache:

This controls the status of the external (L2) cache area. The default is Enabled.

Enabled: *This activates the motherboard's L2 cache thereby increasing performance.*

Disabled: *This deactivates the motherboard's L2 cache thereby lowering performance.*

CPU L2 Cache ECC Checking:

This controls the CPU's L2 cache to support Error Checking and Correcting (ECC). The default is Disabled.

Enabled: *Enabled the CPU's L2 cache to support ECC function. When enabled this item the performance should be impacted 2% ~4%.*

Disabled: *Disabled the CPU's L2 cache to support ECC function.*

Quick Power On Self Test:

This category speeds up the Power On Self Test (POST). The default is Enabled.

Enabled: *This setting will shorten or skip of the items checked during POST.*

Disabled: *Normal POST.*

Boot Sequence:

This category determines which drive is searched first by the O/S (Operating System).

The default is A,C,SCSI.

The following is your list of options:

[A, C, SCSI] - [C, A, SCSI] - [C, CD-ROM, A] - [CD-ROM, C, A]
[D, A, CD-ROM], [E, A, CD-ROM] - [F, A, CD-ROM] - [SCSI, A, C]
[SCSI C, A] - [C Only]

Swap Floppy Drive:

This will swap your physical drive letters A & B if you are using two floppy disks.

The default is Disabled.

Enabled: Floppy A & B will be swapped under the O/S.

Disabled: Floppy A & B will be not swapped.

Boot Up Floppy Seek:

During Power-On-Self-Test (POST), BIOS will determine if the floppy disk drive installed is 40 or 80 tracks. Only 360K type is 40 tracks while 760K, 1.2MB and 1.44MB are all 80 tracks.

The default is Enabled.

Enabled: The BIOS will search the floppy disk drive to determine if it is 40 or 80 tracks.

Disabled: The BIOS will not search for the type of floppy disk drive by track number.

Note: BIOS can not tell the difference between 720K, 1.2MB and 1.44MB drive types as they are all 80 tracks.

Boot Up NumLock Status:

This controls the state of the NumLock key when the system boots.

The default is On.

On: The keypad acts as a 10-key pad.

Off: The keypad acts like the cursor keys.

IDE HDD Block Mode:

IDE Block Mode allows the controller to access blocks of sectors rather than a single sector at a time.

The default is Enabled.

Enabled: Enabled IDE HDD Block Mode. Provides higher HDD transfer rates.

Disabled: Disable IDE HDD Block Mode.

Gate A20 Option:

This refers to the way the system addresses memory above 1MB (extended memory).

The default is Fast.

Normal: The A20 signal is controlled by the keyboard controller or chipset hardware.

Fast: The A20 signal is controlled by Port 92 or chipset specific method.

Memory Parity/ECC Check:

If the DRAM chip in your system support parity/ECC check, select Enabled.

Typematic Rate Setting:

This determines the keystrokes repeat rate.

The default is Disabled.

Enabled: Allows typematic rate and typematic delay programming.

Disabled: The typematic rate and typematic delay will be controlled by the keyboard controller in your system.

Typematic Rate (Chars/Sec):

This is the number of characters that will be repeated by a keyboard press.

The default is 6.

6: 6 characters per second. *8:* 8 characters per second.

10: 10 characters per second. *12:* 12 characters per second.

15: 15 characters per second. *20:* 20 characters per second.

24: 24 characters per second. *30:* 30 characters per second.

Typematic Delay (msec):

This setting controls the time between the first and the second character displayed by typematic auto-repeat.

The default is 250.

250: 250 msec.

500: 500 msec.

750: 750 msec.

1000: 1000 msec.

Security Option:

This category allows you to limit access to the System and Setup, or just to Setup.

The default is Setup.

System: *The system will not boot and the access to Setup will be denied if the correct password is not entered at the prompt.*

Setup: *The system will boot; but the access to Setup will be denied if the incorrect password is not entered at the prompt.*

PCI/VGA Palette Snoop:

This field controls the ability of a primary PCI VGA controller to share a common palette (When a snoop write cycles) with an ISA video card.

The default is Disabled.

Enabled: *If an ISA card is connected to a PCI VGA card via the VESA connector, and that ISA card connects to a VGA monitor, then that ISA card uses the RAMDAC of the PCI card.*

Disabled: *Disables the VGA card Palette Snoop function.*

OS Select For DRAM > 64MB:

Some operating systems require special handling. Use this option only if your system has greater than 64MB of memory.

The default is Non-OS2.

OS2: *Select this if you are running the OS/2 operating system with greater than 64MB of RAM.*

Non-OS2: *Select this for all other operating systems and configurations.*

Video BIOS Shadow:

This option allows video BIOS to be copied into RAM. Video Shadowing will increase the video performance of your system.

The default is Enabled.

Enabled: *Video shadow is enabled.*

Disabled: *Video shadow is disabled.*

Bank 0/1, 2/3, 4/5 DRAM Timing:

This value in this field is set by the system board manufacturer, depending on whether the board has paged DRAMs or EDO (extended data output) DRAMs.

The Choice: Bank 0/1, 2/3, 4/5.

SDRAM Cycle length:

This setting defines the CAS timing parameter of the SDRAM in terms of clocks.

The default is 3.

2: Provides faster memory performance.

3: Provides better memory compatibility.

SDRAM Bank Interleave:

The item allows you to set how many banks of SDRAM support in your mainboard.

The Choice: 2 Bank, 4 Bank, Disabled.

DRAM Page-Mode:

The item will active or inactive chipset page registers.

Enabled: Page-Mode Enabled.

Disabled: No page registers update and non Page-Mode operation.

DRAM Fast Decoding:

The item will effective DRAM operation sequential.

DRAM Read Option:

The item will effective DRAM reading CMD sequential.

Memory Hole:

You can reserve this memory area for the use of ISA adaptor ROMs.

The default is Disabled.

Enabled: This field enables the main memory (15~16MB) to remap to ISA BUS.

Disabled: Normal Setting.

Note: If this feature is enabled you will not be able to cache this memory segment.

Read Around write:

DRAM optimization feature: If a memory read is addressed to a location whose latest write is being held in a buffer contents, and the read is not sent to the DRAM.

The Choice: Enabled, Disabled

Concurrent PCI/Host:

When disabled, CPU bus will be occupied during the entire PCI operation period.

The Choice: Enabled, Disabled

System BIOS Cacheable:

As with caching the Video BIOS above, enabling this selection allows accesses to the system BIOS ROM addressed at F0000H-FFFFFFH to be cached, provided that the cache controller is enabled.

The Choice: Enabled, Disabled.

Video BIOS Cacheable:

When enabled. The Video BIOS cache will cause access to video BIOS addressed at C0000H to C7FFFH to be cached, if the cache controller is also enabled

The Choice: Enabled, Disabled.

Video RAM Cacheable:

Select enabled allows caching of the video RAM, resulting in better system performance. However, if any program writes to this memory area, a system error may result.

The Choice: Enabled, Disabled.

AGP Aperture Size:

The amount of system memory that the AGP card is allowed to share. The default is 64.

4: 4MB of systems memory accessible by the AGP card.

8: 8MB of systems memory accessible by the AGP card.

16: 16MB of systems memory accessible by the AGP card.

32: 32MB of systems memory accessible by the AGP card.

64: 64MB of systems memory accessible by the AGP card.

128: 128MB of systems memory accessible by the AGP card.

256: 256MB of systems memory accessible by the AGP card.

OnChip USB:

Select Enabled if your system contains a Universal Serial Bus(USB) controller and you have a USB peripheral.

USB Keyboard Support:

This controls the activation status of an optional USB keyboard that may be attached.

The default is disabled.

Enabled: Enable USB keyboard support.

Disabled: Disable USB keyboard support.

OnChip Sound:

Turn on/off onchip sound device.

OnChip Modem:

Turn on/off onchip software modem device.

4-4 Power Management Setup

Choose the “POWER MANAGEMENT SETUP” in the CMOS SETUP UTILITY to display the following screen. This menu allows the user to modify the power management parameters and IRQ signals. In general, these parameters should not be changed unless it’s absolutely necessary.

ROM PCI/ISA BIOS (2A6LGPAA)
 POWER MANAGEMENT SETUP
 AWARD SOFTWARE, INC.

ACPI function	: Enabled	Primary INTR	: ON
Power Management	: User Define	IRQ3 (COM 2)	: Primary
PM Control by APM	: Yes	IRQ4 (COM 1)	: Primary
Video off After	: Suspend	IRQ5 (LPT 2)	: Primary
Video off Method	: V/H SYNC+Blank	IRQ6 (Floppy Disk)	: Primary
MODEM Use IRQ	: 3	IRQ7 (LPT 1)	: Primary
Soft-off by PWRBTN	: Delay 4 Sec	IRQ8 (RTC Alarm)	: Disabled
PWRON After PW-Fail	: Former-Status	IRQ9 (IRQ2 Redir)	: Secondary
HDD Power Down	: Disable	IRQ10 (Reserved)	: Secondary
Doze Mode	: Disable	IRQ11 (Reserved)	: Secondary
Suspend Mode	: Disable	IRQ12 (PS/2 Mouse)	: Primary
** PM Events **		IRQ13 (Coprocessor)	: Primary
VGA	: OFF	IRQ14 (Hard Disk)	: Primary
LPT & COM	: LPT/COM	IRQ15 (Reserved)	: Disabled
HDD & FDD	: NO	Esc : Quit	↑ ↓ → ← : Select Item
DMA/master	: OFF	F1 : Help	PU/PD/+/- : Modify
Modem Ring Resume	: Disabled	F5 : Old Values	(Shift) F2 : Color
RTC Alarm Resume	: Disabled	F7 : Load Setup Defaults	

Figure 5: Power Management Setup

You can only change the content of Doze Mode, Standby Mode, and Suspend Mode when the Power Management is set to 'User Define'.

Power Management:

Use this to select your Power Management selection.

The default is User define.

Disabled: *The system operates in NORMAL conditions (Non-GREEN), and the Power Management function is disabled.*

Max. saving: *Maximum power savings. Inactivity period is 1 minute in each mode.*

Min. saving: *Minimum power savings. Inactivity period is 1 hour in each mode.*

User define: *Allows user to define PM Timers parameters to control power saving mode.*

PM controlled APM:

This option shows whether or not you want the Power Management to be controlled the Advanced Power Management (APM).

The default is Yes.

Yes: *APM controls your PM*

No: *APM does not control your PM*

Video Off Method:

This option allows you to select how the video will be disabled by the power management.

The default is V/H Sync + Blank

V/H Sync + Blank: *System turns off vertical and horizontal synchronization ports and writes blanks to the video buffer.*

DPMS: *Select this option if your monitor supports the Display Power Management Signaling (DPMS) standard of the Video Electronics Standards Association (VESA). Use the software supplied for your video subsystem to select video power management values.*

Blank Screen: *System only writes blanks to the video buffer.*

MODEM Use IRQ:

Name the interrupt request (IRQ) line assigned to the modem (if any) on your system. Activity of the selected IRQ always awakens the system.

Default is IRQ 3.

<i>N/A: No IRQ is used.</i>	<i>3: IRQ 3</i>
<i>4: IRQ 4</i>	<i>5: IRQ 5</i>
<i>7: IRQ 7</i>	<i>9: IRQ 9</i>
<i>10: IRQ 10</i>	<i>11: IRQ 11</i>

The EP-6VBA supports HDD Power Down, Doze and Standby power saving functions when using the Intel Pentium II Processor.

The default is Disabled

Soft-Off by PWR-BTTN:

Use this to select your soft-off function.

The default is Delay 4 sec.

Instant Off: Turns off instantly.

Delay 4 Second : Turns off after a 4 second delay. If momentary press of button, the system will go into Suspend Mode. Press again to take system out of Suspend Mode.

PWRON After PW-Fail:

The system will stay of or power on after a power interrupte.

The default is Fomer-Status.

Fomer-Status: Stay off or power on depend on system safe shut-down or power fail.

ON: System always power on after a power interrupte.

OFF: System always stay off after a power interrupte.

HDD Power Down:

HDD Standby timer can be set from 1 to 15 minute(s).

Doze Mode:

The “Doze” mode timer starts to count when no “PM events” have occurred.

Suspend Mode:

This function works only when the Pentium II Processor is installed. The timer starts to count when “System Standby” mode timer is timed out and no “PM Events” are occurring. Valid range is from 1 minute up to 1 hour.

VGA:

When set to *On* (default), any event occurring at a VGA port will awaken a system which has been powered down.

LPT & COM:

When set to *On* (default), any event occurring at a COM(serial)/LPT (printer) port will awaken a system which has been powered down.

HDD & FDD:

When set to *On* (default), any event occurring at a hard or floppy drive port will awaken a system which has been powered down.

DMA/master:

When set to *On* (default), any event occurring to the DMA controller will awaken a system which has been powered down.

RTA Alarm Resume:

When set to *Enable rta alarm resume*, you could set the date (of month) and timer (hh:mm:ss), any event occurring at will awaken a system which has been powered down.

Modem Ring Resume:

When set to *Enabled*, any event occurring to the Modem Ring will awaken a system which has been powered down.

Primary INTR:

When set to *On* (default), any event occurring at will awaken a system which has been powered down.

4-5 PNP/PCI Configuration

The PNP/PCI configuration program is for the user to modify the PCI/ISA IRQ signals when various PCI/ISA cards are inserted in the PCI or ISA slots.

WARNING: *Conflicting IRQ's may cause the system to not find certain devices.*

ROM PCI/ISA BIOS(2A6LGPAA)
PNP/PCI CONFIGURATION
AWARD SOFTWARE, INC.

PNP OS Installed	: No	CPU to PCI Write Buffer	: Enabled
Resources Controlled By	: Manual	PCI Dynamic Bursting	: Enabled
Reset Configuration Data	: Disabled	PCI Master 0 WS Write	: Enabled
IRQ-3 Assigned to	: PCI/ISA PnP	PCI Delay Transaction	: Disabled
IRQ-4 Assigned to	: PCI/ISA PnP	PCI#2 Access #1 Retry	: Disabled
IRQ-5 Assigned to	: PCI/ISA PnP	AGP Master 1 WS Write	: Enabled
IRQ-7 Assigned to	: PCI/ISA PnP	AGP Master 1 WS Read	: Disabled
IRQ-9 Assigned to	: PCI/ISA PnP	Solt 1 Use IRQ No.	: Auto
IRQ-10 Assigned to	: PCI/ISA PnP	Solt 2 Use IRQ No.	: Auto
IRQ-11 Assigned to	: PCI/ISA PnP	Solt 3 Use IRQ No.	: Auto
IRQ-12 Assigned to	: PCI/ISA PnP	Solt 4 Use IRQ No.	: Auto
IRQ-14 Assigned to	: PCI/ISA PnP	Solt 5 Use IRQ No.	: Auto
IRQ-15 Assigned to	: PCI/ISA PnP		
DMA-0 Assigned to	: PCI/ISA PnP	Esc : Quit	↑ ↓ → ← : Select Item
DMA-1 Assigned to	: PCI/ISA PnP	F1 : Help	PU/PD/+/- : Modify
DMA-3 Assigned to	: PCI/ISA PnP	F5 : Old Values	(Shift) F2 : Color
DMA-5 Assigned to	: PCI/ISA PnP	F7 : Load Setup Defaults	
DMA-6 Assigned to	: PCI/ISA PnP		
DMA-7 Assigned to	: PCI/ISA PnP		

Figure 6: PNP/PCI Configuration Setup

PNP OS Installed:

Do you have a PNP OS installed on your system. The default is No.

Yes: *Select if you are using a PNP OS*

No: *Select if your OS does not support PNP.*

Resources Controlled By:

Who controlled the system PNP/PCI resources.

The default is Manual.

Manual: *PNP Card's resources will be controlled manually. You can set which IRQ-X and DMA-X are assigned to PCI/ISA PNP or Legacy ISA Cards.*

Auto: *If your ISA card and PCI card are all PNP cards, BIOS will assign the interrupt resource automatically.*

Reset Configuration Data:

This setting allows you to clear ESCD data..

The default is Disabled.

Disabled: Normal Setting.

Enabled: If you have plugged in some Legacy cards to the system and they were recorded into ESCD (Extended System Configuration Data), you can set this field to Enabled in order to clear ESCD.

CPU to PCI Write Buffer:

When enabled, up to four D words of data can be written to the PCI bus without interrupting the CPU. When disabled, a write buffer is not used and the CPU read cycle will not be completed until the PCI bus signals that it is ready to receive the data.

The Choice: Enabled, Disabled.

PCI Dynamic Bursting:

When Enabled, data transfers on the PCI bus, where possible, make use of the high-performance PCI burst protocol, in which greater amounts of data are transferred at a single command.

The Choice: Enabled, Disabled.

PCI Master 0 WS Write:

When Enabled, writes to the PCI bus are command with zero wait states.

The Choice: Enabled, Disabled.

PCI Delay Transaction:

The chipset has an embedded 32-bit posted write buffer to support delay transactions cycles. Select Enabled to support compliance with PCI specification version 2.1.

The Choice: Enabled, Disabled.

PCI #2 Access #1 Retry:

This item allows you enabled/disable the PCI #2 Access #1 Retry.

The Choice: Enabled, Disabled.

4-6 Load Setup Defaults

The “LOAD SETUP DEFAULTS” function loads the system default data directly from ROM and initializes the associated hardware properly. This function will be necessary only when the system CMOS data is corrupted.

4-7 Integrated Peripherals

ROM PCI/ISA BIOS(2A6LGPAA)
 INTEGRATEDPERIPHERALS
 AWARD SOFTWARE, INC.

OnChip IDE Channel0 : Enabled	Onboard Parallel Port : 378/IRQ7
OnChip IDE Channel1 : Enabled	Onboard Parallel Mode : ECP/EPP
IDE Prefetch Mode : Enabled	ECP Mode Use DMA : 3
Primary Master PIO : Auto	Parallel Port EPP Type : EPP1.9
Primary Slave PIO : Auto	Onboard Legacy Audio : Enabled
Secondary Master PIO : Auto	Sound Blaster : Disabled
Secondary Slave PIO : Auto	SB I/O Base Address : 220H
Primary Master UDMA : Auto	SB IRQ Select : IRQ 5
Primary Slave UDMA : Auto	SB DMA Select : DMA 1
Secondary MasterUDMA : Auto	MPU-401 : Disabled
Secondary Slave UDMA : Auto	MPU-401 I/O Address : 330-333H
Init Display First : PCI Slot	FM Port (388-38BH) : Disabled
Onboard FDD Controller : Enabled	Game Port (200-207H) : Enabled
Onboard Serial Port 1 : Auto	
Onboard Serial Port 2 : Auto	Esc : Quit ↑ ↓ → ← : Select Item
UART 2 Mode : HPSIR	F1 : Help PU/PD/+/- : Modify
IR Function Duplex : Half	F5 : Old Values (Shift) F2 : Color
TX, RX inverting enable : No, Yes	F7 : Load Setup Defaults

Figure 8: Integrated Peripherals

Note: *If you do not use the Onboard IDE connector, then you will need to set Onboard Primary PCI IDE: Disabled and Onboard Secondary PCI IDE: Disabled*

Note: *The Onboard PCI IDE cable should be equal to or less than 18 inches (45 cm.).*

IDE Prefetch Mode:

Enable prefetching for IDE drive interfaces that support its faster drive accesses. If you are getting disk drive errors, change the setting to omit the drive interface where the errors occur. Depending on the configuration of your IDE subsystem, this field may not appear, and it does not appear when the Internal PCI/IDE field, above, is Disabled.

The Choice: Enabled, Disabled.

Onchip IDE Channel:

The default value is Enabled.

Enabled: Enables Onboard IDE primary port.

Disabled: Disables Onboard IDE primary port.

Onchip IDE Channel:

The default is Enabled.

Enabled: Enables Onboard IDE secondary port.

Disabled: Disables Onboard IDE secondary port.

Primary Master PIO:

The default is Auto.

Auto: BIOS will automatically detect the Onboard Primary Master PCI IDE HDD Accessing mode.

Mode 0~4: Manually set the IDE Programmed interrupt mode.

Primary Slave PIO:

The default is Auto.

Auto: BIOS will automatically detect the Onboard Primary Slave PCI IDE HDD Accessing mode.

Mode 0~4: Manually set the IDE Programmed interrupt mode.

Secondary Master PIO:

The default is Auto.

Auto: BIOS will automatically detect the Onboard Secondary Master PCI IDE HDD Accessing mode.

Mode 0~4: Manually set the IDE Programmed interrupt mode.

Secondary Slave PIO:

The default is Auto.

Auto: BIOS will automatically detect the Onboard Secondary Slave PCI IDE HDD Accessing mode.

Mode 0~4: Manually set the IDE Programmed interrupt mode.

Primary Master UDMA:

This allows you to select the mode of operation for the hard drive.

The default is Auto.

Auto: The computer will select the optimal setting.

Disabled: The hard drive will run in normal mode.

Primary Slave UDMA:

This allows you to select the mode of operation for the hard drive.
The default is Auto.

Auto: The computer will select the optimal setting.

Disabled: The hard drive will run in normal mode.

Secondary Master UDMA:

This allows you to select the mode of operation for the hard drive.
The default is Auto.

Auto: The computer will select the optimal setting.

Disabled: The hard drive will run in normal mode.

Secondary Slave UDMA:

This allows you to select the mode of operation for the hard drive.
The default is Auto.

Auto: The computer will select the optimal setting.

Disabled: The hard drive will run in normal mode.

Init Display First:

If two video cards are used (1 AGP and 1 PCI) this specifies which one will be the primary display adapter.

The default is PCI Slot.

PCI Slots: PCI video card will be primary adapter.

AGP: AGP video card will be primary adapter.

Onboard FDD Controller:

This controls the state of the onboard floppy controller. The default value is Enabled.

Enabled: Enable the Onboard floppy drive interface controller.

Disabled: Disable the Onboard floppy drive interface controller.

Onboard Serial Port 1:

This field allows the user to configure the 1st serial port.

The default is Auto.

AUTO: Enable Onboard Serial port 1 and address is Auto adjusted

COM1: Enable Onboard Serial port 1 and address is 3F8H/IRQ4.

COM2: Enable Onboard Serial port 1 and address is 2F8H/IRQ3.

COM3: Enable Onboard Serial port 1 and address is 3E8H/IRQ4.

COM4: Enable Onboard Serial port 1 and address is 2E8H/IRQ3.

Disabled: Disable Onboard Serial port 1.

Onboard Serial Port 2:

This field allows the user to configure the 2nd serial port.

The default is Auto.

AUTO: Enable Onboard Serial port 2 and address is Auto adjusted

COM1: Enable Onboard Serial port 2 and address is 3F8H/IRQ4.

COM2: Enable Onboard Serial port 2 and address is 2F8H/IRQ3.

COM3: Enable Onboard Serial port 2 and address is 3E8H/IRQ4.

COM4: Enable Onboard Serial port 2 and address is 2E8H/IRQ3.

Disabled: Disable Onboard Serial port 2.

UART 2 Mode:

This item allows you to determine which Infra Red (IR) function of onboard I/O chip.

The Choice: Standard, ASKIR, HPSIR.

IR Function Duplex:

This item allows you to select the IR function when you select the UART2 Mode is ASKIR.

The Choice: Half, Full.

TX, RX inverting enable:

This item invert serial port 2 TX and RX output signal level.

No, No — TX, RX have no signal inverting.

No, Yes — RX have signal inverting.

Yes, No — TX have signal inverting.

Yes, Yes — TX, RX have signal inverting.

Onboard Parallel port:

This field allows the user to configure the LPT port.

The default is 378H / IRQ7.

378H: Enable Onboard LPT port and address is 378H and IRQ7.

278H: Enable Onboard LPT port and address is 278H and IRQ5.

3BCH: Enable Onboard LPT port and address is 3BCH and IRQ7.

Disabled: Disable Onboard LPT port.

Onboard Parallel Mode:

This field allows the user to select the parallel port mode.

The default is ECP+EPP.

Normal: Standard mode. IBM PC/AT Compatible bidirectional parallel port.

EPP: Enhanced Parallel Port mode.

ECP: Extended Capabilities Port mode.

EPP+ECP: ECP Mode & EPP Mode.

ECP Mode USE DMA:

This field allows the user to select DMA1 or DMA3 for the ECP mode.

The default is DMA3.

DMA1: This field selects the routing of DMA1 for the ECP mode.

DMA3: This field selects the routing of DMA3 for the ECP mode.

Parallel Port EPP Type:

This item allows you to determine the IR transfer mode of onboard I/O chip.

The Choice: EPP1.9, EPP1.7.

Onboard Legacy Audio:

Legacy Audio enabled/disabled.

Sound Blaster:

Sound Blaster compatible device enabled/disabled.

SB I/O Base Address:

Sound Blaster I/O resource selection.

SB IRQ Select:

Legacy audio device IRQ selection.

SB DMA Select:

Sound Blaster DMA channel selection.

MPU-401:

MPU-401 function enabled/disabled.

MPU-401 I/O Address:

Built-in MPU-401 compatible MIDI I/O port selection:

300-303H

310-313H

320-323H

330-333H (default)

CPU Host Clock (CPU/PCI):

Allows the external clock to be modified depending upon what FSB has been selected. Should not be used to clock processor faster than it was designed for. (See page A-11).

The default is Default.

66MHz FSB options: *Default, 66.8, 68.5, 75, and 83MHz.*

100MHz FSB options: *Default, 100, 103, 112, and 133MHz.*

DRAM Clock Is:

The item will synchronize/asynchronize DRAM operation clock.

Host Clock: *DRAM has same working clock with CPU host bus.*

2/3 Host: *DRAM running with lower operation clock.*

CPUFAN Off In Suspend:

This option is used to set if the CPU fans will turn off during suspend mode.

The default is Enabled.

Enabled: *The system will turn off the CPU fans during suspend mode.*

Disabled: *The system will not turn off the CPU fan during suspend mode.*

Current System Temp:

This is the Current temperature of the system.

Current CPU Temperature:

This is the current temperature of the CPU.

Current CPU FAN Speed:

The current CPU fan speed in RPMs.

Current Chassis FAN Speed:

The current chassis fan speed in RPMs.

CPU(V):

The voltage level of the CPU(Vio/Vcore).

Vtt, +3.3V, +5V, +12V: The voltage level of the switch power supply.

4-9 Change Supervisor or User Password

To change the password, choose the “SUPERVISOR PASSWORD or USER PASSWORD” option from the CMOS SETUP UTILITY menu and press [Enter].

NOTE: Either “Setup” or “System” must be selected in the “Security Option” of the BIOS FEATURES SETUP menu.

1. If CMOS is corrupted or the option was not used, a default password stored in the ROM will be used. The screen will display the following message:

Enter Password:

Press the [Enter] key to continue after the proper password is given.

2. If the CMOS is corrupted or the option was used earlier and the user wishes to change the default password, the SETUP UTILITY will display a message and ask for a confirmation.

Confirm Password:

3. After pressing the [Enter] key (ROM password if the option was not used) or current password (user-defined password), the user can change the password and store new one in CMOS RAM. A maximum of 8 characters can be entered.

4-10 IDE HDD Auto Detection

The “IDE HDD auto detection” utility is a very useful tool, especially when you do not know which kind of hard disk type you are using. You can use this utility to detect the correct disk type installed in the system automatically. But now you can set HARD DISK TYPE to Auto in the STANDARD CMOS SETUP. You don’t need the “IDE HDD AUTO DETECTION” utility. The BIOS will Auto-detect the hard disk size and model on display during POST.

ROMPCI/ISABIOS(2A6LGPA)
 CMOSSETUPUTILITY
 AWARD SOFTWARE, INC.

HARD DISKS	TYPE	SIZE	CYLS	HEADS	PRECOMP	LANDZONE	SECTORS	MODE
Primary Master :								
Select Secondary Slave Option (N=Skip) : N								
OPTIONSSIZE	CYLS	HEAD	PRECOMP	LANDZ	SECTORMODE			
2 (Y)	4310	524	255	0	14847	63	LBA	
1	4310	14848	9	65535	14847	63	NORMAL	
3	4310	928	144	65535	14847	63	LARGE	
Note: Some OSes (like SCO-UNIX) must use NORMAL for installation								
ESC : Skip								

Figure 10: IDE HDD Auto Detection

NOTE: HDD Modes

The Award BIOS supports 3 HDD modes : NORMAL, LBA & LARGE NORMAL mode

Generic access mode in which neither the BIOS nor the IDE controller will make any transformations during accessing.

The maximum number of cylinders, head & sectors for NORMAL mode are.

- 1024, 16 & 63
- no. Cylinder (1024)
- x no. Head (16)
- x no. Sector (63)
- x no. per sector (512)
- 528 Megabytes

If user set his HDD to NORMAL mode, the maximum accessible HDD size will be 528 Megabytes even though its physical size may be greater than that!

LBA (Logical Block Addressing) mode: A new HDD accessing method to overcome the 528 Megabyte bottleneck. The number of cylinders, heads & sectors shown in setup may not be the number physically contained in the HDD. During HDD accessing, the IDE controller will transform the logical address described by sector, head & cylinder into its own physical address inside the HDD. The maximum HDD size supported by LBA mode is 8.4 GigaBytes which is obtained by the following formula:

$$\begin{array}{r}
 \text{no. Cylinder} \quad \quad (1024) \\
 \times \text{no. Head} \quad \quad (255) \\
 \times \text{no. Sector} \quad \quad (63) \\
 \underline{\times \text{bytes per sector}} \quad \underline{(512)} \\
 \hline
 8.4 \text{ GigaBytes}
 \end{array}$$

LARGE mode: Extended HDD access mode supported by Award Software.

Some IDE HDDs contain more than 1024 cylinder without LBA support (in some cases, user do not want LBA). The Award BIOS provides another alternative to support these kinds of LARGE mode.

<u>CYLS</u>	<u>HEADS</u>	<u>SECTOR</u>	<u>MODE</u>
1120	16	59	NORMAL
560	32	59	LARGE

BIOS tricks DOS (or other OS) that the number of cylinders is less than 1024 by dividing it by 2. At the same time, the number of heads is multiplied by 2. A reverse transformation process will be made inside

INT 12h in order to access the right HDD address!

Maximum HDD size:

$$\begin{array}{r}
 \text{no. Cylinder} \quad \quad (1024) \\
 \times \text{no. Head} \quad \quad (32) \\
 \times \text{no. Sector} \quad \quad (63) \\
 \underline{\times \text{bytes per sector}} \quad \underline{(512)} \\
 \hline
 1 \text{ GigaByte}
 \end{array}$$

Note: To support LBA or LARGE mode of HDDs, there must be some software involved. All the software is located in the Award HDD Service Routine (INT 13h). It may fail to access a HDD with LBA (LARGE) mode selected if you are running under an Operating System which replaces the whole INT 13h.

UNIX operating systems do not support either LBA or LARGE and must utilize the Standard mode. UNIX can support drives larger than 528MB.

4-11 HDD Low Level Format

Interleave: Select the interleave number of the hard disk drive you wish to perform a low level format on. You may select from 1 to 8. Check the documentation that came with the drive for the correct interleave number, or select 0 for automatic detection.

Auto scan bad track: This allows the utility to scan first then format by each track.

Start: Press<Y>to start low level format.

4-12 Save & Exit Setup

The “SAVE & EXIT SETUP” option will bring you back to the boot up procedure with all the changes you just recorded in the CMOS RAM.

4-13 Exit Without Saving

The “EXIT WITHOUT SAVING” option will bring you back to normal boot up procedure without saving any data into CMOS RAM.

All old data in the CMOS will not be destroyed.

Page Left Blank

Appendix A

A-1 MEMORY MAP

Address Range	Size	Description
[00000-7FFFF]	512K	Conventional memory
[80000-9FBFF]	127K	Extended Conventional memory
[9FC00-9FFFF] installed	1K	Extended BIOS data area if PS/2 mouse is installed
[A0000-C7FFF]	160K	Available for Hi DOS memory
[C8000-DFFFF] ROMs	96K	Available for Hi DOS memory and adaptor
[E0000-EEFFF]	60K	Available for UMB
[EF000-EFFFF]	4K	Video service routine for Monochrome & CGA adaptor
[F0000-F7FFF]	32K	BIOS CMOS setup utility
[F8000-FCFFF]	20K	BIOS runtime service routine (2)
[FD000-FDFFF]	4K	Plug and Play ESCD data area
[FE000-FFFFF]	8K	BIOS runtime service routine (1)

A-2 I/O MAP

[000-01F]	DMA controller.(Master)
[020-021]	INTERRUPT CONTROLLER.(Master)
[022-023]	CHIPSET control registers. I/O ports.
[040-05F]	TIMER control registers.
[060-06F]	KEYBOARD interface controller.(8042)
[070-07F]	RTC ports & CMOS I/O ports.
[080-09F]	DMA register.
[0A0-0BF]	INTERRUPT controller.(Slave)
[0C0-0DF]	DMA controller.(Slave)
[0F0-0FF]	MATH COPROCESSOR.
[1F0-1F8]	HARD DISK controller.
[278-27F]	PARALLEL port 2.
[2B0-2DF]	GRAPHICS adapter controller.
[2F8-2FF]	SERIAL port 2.
[360-36F]	NETWORK ports.
[378-37F]	PARALLEL port 1.

[3B0-3BF]	MONOCHROME & PARALLEL port adapter.
[3C0-3CF]	EGA adapter.
[3D0-3DF]	CGA adapter.
[3F0-3F7]	FLOPPY DISK controller.
[3F8-3FF]	SERIAL port 1.

A-3 TIMER & DMA CHANNELS MAP

TIMER MAP:

TIMER Channel 0	System timer interrupt.
TIMER Channel 1	DRAM REFRESH request.
TIMER Channel 2	SPEAKER tone generator.

DMA CHANNELS:

DMA Channel 0	Available.
DMA Channel 1	Onboard ECP (Option).
DMA Channel 2	FLOPPY DISK (SMC CHIP).
DMA Channel 3	Onboard ECP (default).
DMA Channel 4	Cascade for DMA controller 1.
DMA Channel 5	Available.
DMA Channel 6	Available.
DMA Channel 7	Available

A-4 INTERRUPT MAP

NMI :

Parity check error.

IRQ (H/W):

0	System TIMER interrupt from TIMER 0.
1	KEYBOARD output buffer full.
2	Cascade for IRQ 8-15.
3	SERIAL port 2.
4	SERIAL port 1.
5	PARALLEL port 2.
6	FLOPPY DISK (SMC CHIP).
7	PARALLEL port 1.
8	RTC clock.
9	Available.
10	Available.
11	Available.

- 12 PS/2 Mouse.
- 13 MATH coprocessor.
- 14 Onboard HARD DISK (IDE1) channel.
- 15 Onboard HARD DISK (IDE1) channel.

A-5 RTC & CMOS RAM MAP

RTC & CMOS:

- 00 Seconds.
- 01 Second alarm.
- 02 Minutes.
- 03 Minutes alarm.
- 04 Hours.
- 05 Hours alarm.
- 06 Day of week.
- 07 Day of month.
- 08 Month.
- 09 Year.
- 0A Status register A.
- 0B Status register B.
- 0C Status register C.
- 0D Status register D.
- 0E Diagnostic status byte.
- 0F Shutdown byte.
- 10 FLOPPY DISK drive type byte.
- 11 Reserve.
- 12 HARD DISK type byte.
- 13 Reserve.
- 14 Equipment type.
- 15 Base memory low byte.
- 16 Base memory high byte.
- 17 Extension memory low byte.
- 18 Extension memory high byte.
- 19-2d
- 2E-2F
- 30 Reserved for extension memory low byte.
- 31 Reserved for extension memory high byte.
- 32 DATE CENTURY byte.
- 33 INFORMATION FLAG.

Appendix B

B-1 POST CODES

ISA POST codes are typically output to I/O port address 80h.

POST (hex)	DESCRIPTION
01-02	Reserved.
C0	Turn off OEM specific cache, shadow.
03	<ol style="list-style-type: none"> 1. Initialize EISA registers (EISA BIOS only). 2. Initialize all the standard devices with default values Standard devices includes. <ul style="list-style-type: none"> - DMA controller (8237). - Programmable Interrupt Controller (8259). - Programmable Interval Timer (8254). - RTC chip.
04	Reserved
05	1. Keyboard Controller Self-Test.
06	2. Enable Keyboard Interface.
07	Reserved.
08	Verifies CMOS's basic R/W functionality.
C1	Auto-detection of onboard DRAM & Cache.
C5	Copy the BIOS from ROM into E0000-FFFFFF shadow RAM so that POST will go faster.
08	Test the first 256K DRAM.
09	OEM specific cache initialization. (if needed)
0A	<ol style="list-style-type: none"> 1. Initialize the first 32 interrupt vectors with corresponding Interrupt handlers. Initialize INT numbers from 33-120 with Dummy (Spurious) Interrupt Handler. 2. Issue CPUID instruction to identify CPU type. 3. Early Power Management initialization. (OEM specific)
0B	<ol style="list-style-type: none"> 1. Verify the RTC time is valid or not. 2. Detect bad battery. 3. Read CMOS data into BIOS stack area. 4. PnP initializations including. (PnP BIOS only) <ul style="list-style-type: none"> - Assign CSN to PnP ISA card. - Create resource map from ESCD. 5. Assign IO & Memory for PCI devices. (PCI BIOS only)

0C	Initialization of the BIOS Data Area. (40:ON - 40:FF)
0D	<ol style="list-style-type: none">1. Program some of the Chipset's value according to Setup. (Early Setup Value Program)2. Measure CPU speed for display & decide the system clock speed.3. Video initialization including Monochrome, CGA, EGA/VGA. If no display device found, the speaker will beep.
0E	<ol style="list-style-type: none">1. Test video RAM. (If Monochrome display device found)2. Show messages including.<ul style="list-style-type: none">- Award Logo, Copyright string, BIOS Data code & Part No.- OEM specific sign on messages.- Energy Star Logo. (Green BIOS ONLY)- CPU brand, type & speed.- Test system BIOS checksum. (Non-Compress Version only)
0F	DMA channel 0 test.
10	DMA channel 1 test.
11	DMA page registers test.
12-13	Reserved.
14	Test 8254 Timer 0 Counter 2.
15	Test 8259 interrupt mask bits for channel 1.
16	Test 8259 interrupt mask bits for channel 2.
17	Reserved.
19	Test 8259 functionality.
1A-1D	Reserved.
1E	If EISA NVM checksum is good, execute EISA initialization. (EISA BIOS only)
1F-29	Reserved.
30	Detect Base Memory & Extended Memory Size.
31	<ol style="list-style-type: none">1. Test Base Memory from 256K to 640K.2. Test Extended Memory from 1M to the top of memory.
32	<ol style="list-style-type: none">1. Display the Award Plug & Play BIOS Extension message. (PnP BIOS only)2. Program all onboard super I/O chips (if any) including COM ports, LPT ports, FDD port ... according to setup value.
33-3B	Reserved.
3C	Set flag to allow users to enter CMOS Setup Utility.
3D	<ol style="list-style-type: none">1. Initialize Keyboard.2. Install PS2 mouse.

3E	Try to turn on Level 2 cache. Note: Some chipset may need to turn on the L2 cache in this stage. But usually, the cache is turn on later in POST 61h.
3F-40	Reserved.
BF	1. Program the rest of the Chipset's value according to Setup. (Later Setup Value Program)
41	2. If auto-configuration is enabled, program the chipset with pre-defined Values.
42	Initialize floppy disk drive controller.
43	Initialize Hard drive controller.
45	If it is a PnP BIOS, initialize serial & parallel ports.
44	Reserved.
45	Initialize math coprocessor.
46-4D	Reserved.
4E	If there is any error detected (such as video, kb...), show all error messages on the screen & wait for user to press <F1> key.
4F	1. If password is needed, ask for password. 2. Clear the Energy Star Logo. (Green BIOS only)
50	Write all CMOS values currently in the BIOS stack area back into the CMOS.
51	Reserved.
52	1. Initialize all ISA ROMs. 2. Later PCI initializations. (PCI BIOS only) <ul style="list-style-type: none">- assign IRQ to PCI devices.- initialize all PCI ROMs. 3. PnP Initializations. (PnP BIOS only) <ul style="list-style-type: none">- assign IO, Memory, IRQ & DMA to PnP ISA devices.- initialize all PnP ISA ROMs. 4. Program shadows RAM according to Setup settings.
	5. Program parity according to Setup setting.
	6. Power Management Initialization. <ul style="list-style-type: none">- Enable/Disable global PM.- APM interface initialization.
53	1. If it is NOT a PnP BIOS, initialize serial & parallel ports. 2. Initialize time value in BIOS data area by translate the RTC time value into a timer tick value.
60	Setup Virus Protection. (Boot Sector Protection) functionality according to Setup setting.

- 61 1. Try to turn on Level 2 cache.
Note: If L2 cache is already turned on in POST 3D, this part will be skipped.
2. Set the boot up speed according to Setup setting.
3. Last chance for Chipset initialization.
4. Last chance for Power Management initialization. (Green` BIOS only)
5. Show the system configuration table.
- 62 1. Setup daylight saving according to Setup value.
2. Program the NUM Lock, typematic rate & typematic speed according to Setup setting.
- 63 1. If there is any changes in the hardware configuration, update the ESCD information. (PnP BIOS only)
2. Clear memory that have been used.
3. Boot system via INT 19H.
- FF System Booting. This means that the BIOS already pass the control right to the operating system.

B-2 Unexpected Errors:

POST (hex)	DESCRIPTION
B0	If interrupt occurs in protected mode.
B1	Unclaimed NMI occurs.0

Appendix C

NOTE:

The "LOAD SETUP DEFAULTS" function loads the system default data directly from ROM and initializes the associated hardware properly. This function will be necessary when you accept this mainboard, or the system CMOS data is corrupted.

ROM PCI/ISA BIOS(2A6LGPA)
CMOS SETUP UTILITY
AWARD SOFTWARE, INC.

Table with BIOS menu items: STANDARD CMOS SETUP, BIOS FEATURES SETUP, CHIPSET FEATURES SETUP, POWER MANAGEMENT SETUP, PNP/PCI CONFIGURATION, INTEGRATED PERIPHERALS, LOAD SETUP DEFAULTS, SUPERVISOR PASSWORD, USER PASSWORD, IDE HDD AUTO DETECTION, HDD LOW LEVEL FORMAT, SETUP SAVING. Includes a dialog box: Load SETUP Default (Y/N)? Y. Navigation keys: ESC: QUIT, F10: Save & Exit Setup, arrow keys: SELECT ITEM, (Shift)F2: Change Color. Footer: Load Setup Defaults Except Standard COMS SETUP.

LOAD SETUP DEFAULTS

Appendix D

D-1 Sound Driver Quick Installation Guide

*Install windows 95/98 Sound Driver*****Installation Notes:**

You must already have Windows 95/98 install on your computer.

1. Login windows 95/98, then click “My Computer” icon, “Control Panel” icon, and “System” icon.
2. Before the Driver install into windows 95/98, you will find a yellow question mark icon next to the “Other Devices” of the “Device Manager” show in Figure 1-1 below.

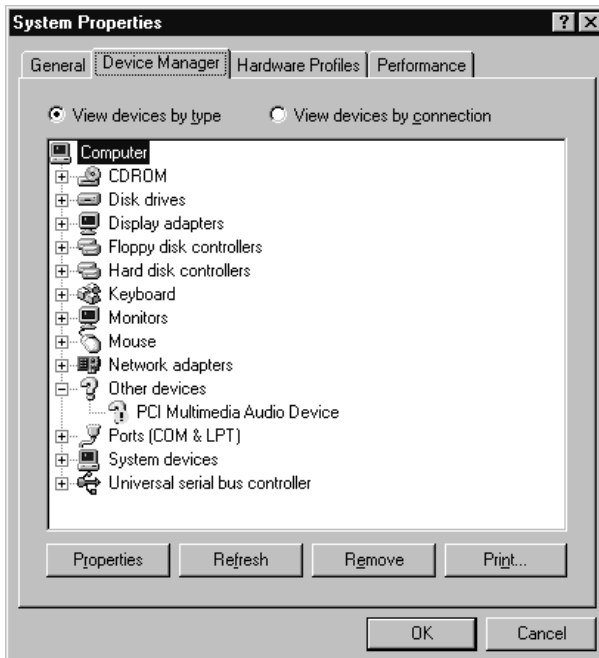


Figure 1

3. Please remove the yellow question mark then click "refresh", windows will detect it's presence and display the following dialog.
4. Click "Next" button, it will find Floppy A:
5. Click "Other Locations;K"button
6. Key-in the driver location (ex. D:\Audio\Win9x) then click "OK" button (You can use the "Browse" button to find the driver location; if you don't know where the driver is)
7. Click "Finish" button
8. The click "OK" button
9. Re-key in the driver location to the "Copy files from:"(refer step 4) click "ok", the you will be complete to install driver. Remember to restart your computer to take it into effect, show in figure 1-2 below.

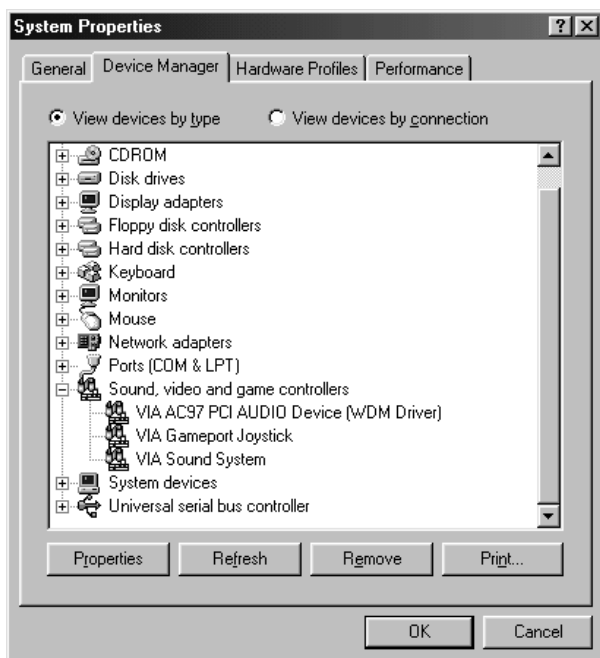


Figure 2

D-2 AGP Driver Quick Installation Guide

Install windows 95/98/NT V4.0 Driver

****Installation Notes:**

1. Before installing Windows 95 Driver, please do install Windows 95 OSR2.0 "USB SUPP.EXE" first (upgrades OS up to OSR2.1 level).
2. The Operation System(OS) and DirectX 5.0 or 6.0 must be installed into the system prior to installation.
3. Before installing Windows NT 4.0 Driver, please install "Microsoft service pack 3 or 4" First.

1. After Windows 9x or Windows NT V4.0 was loaded, click on "My computer" icon, "control panel" icon, and then the "Display" icon.
2. You should now be in the "Display Properties" Windows, select the "Settings" tab, and click on the "Advanced Properties" button; or click on the "Browse" button(win98).
3. In the "Advanced Display Properties" Window, select the "Adapter" tab, and click "change..." button.
4. From the new window, click on the "Have Disk" button.
5. You should now be in the "Install From Disk" window. The Driver are located in the "..\Video\Win9x\" or "..\Video\WINNT\"", click "ok" to continue the Install.
6. Restart the computer to enable the AGP driver when you complete the Installation.