

EN-7100

USER MANUAL



Series EN-7100

*****Important**-First please check your model number before proceeding. The user manual is set up to correspond to the model number and installation will vary depending on the model.

Required tools: Phillips head screwdriver, pliers

*****(Photos shown may vary according to model number)**

Step 1. Remove front bezel

Place case on edge of table (Fig.1). With one hand holding top of chassis, pull quickly from the bottom of the bezel to remove it (Fig. 2).

****Note**-It might require some force to remove due to the snug fit to the chassis.

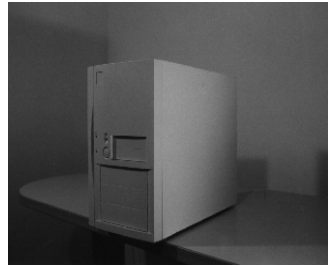


Fig:1



Fig:2

Step 2. Remove top cover

Remove screws. Place hands on sides of top cover and thumbs firmly on chassis. Slide top cover towards you 1" (Fig. 3). Spread sides and lift straight up to remove.

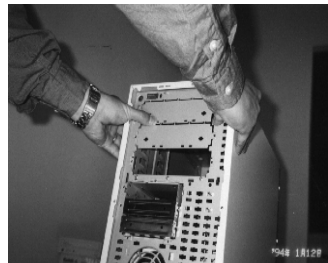


Fig:3

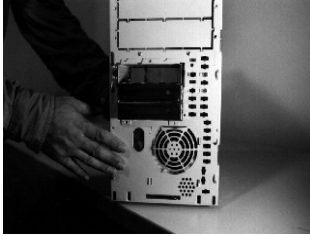


Fig:4

Step 3. Install fan and speaker

Remove fan housing by using thumbs to unfasten clips and place fan in housing (Fig. 4). Snap fan housing back into the chassis. Connect fan and speaker wiring to M/B as instructed in M/B user manual (After M/B is installed!).

Step 4. Install FDD, HDD, CD-ROM, 5.25" FDD, DVD

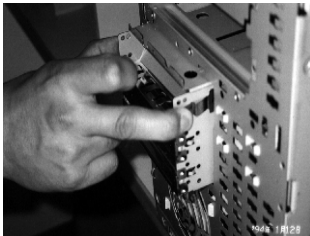


Fig:5

Install 3.5" HDD and FDD (floppy)

A. Squeeze tabs on side and remove 3.5" drive cassette (Fig. 5). Slide HDD into cassette and fasten with coarse thread flat head screws. Make sure EMI clip is In place.

B. Slide floppy into the same cassette and fasten with fine thread flat head screws. Then slide cassette back in to drive bay And snap in to place.



Fig:6

Install CD-ROM, (DVD or 5.25" FDD)

A. Fasten slide guides to the sides of CD-ROM (DVD or 5.25" FDD) using fine thread flat head screws (Fig. 6).

B. Slide CD-ROM in to 5.25" bay and snap in to place (Fig. 7)..

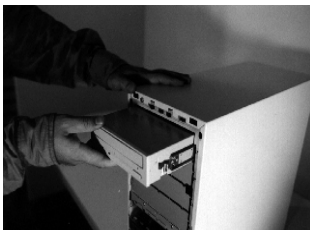


Fig:7

Step 5. Install motherboard(M/B)

- A. Identify if M/B is AT or ATX.
- B. Remove M/B mounting plate by pulling Latch towards back of chassis and swinging out the plate (Fig. 8).
- C. Make sure punch out holes for I/O ports on the I/O plate are punched out matching ports on the M/B.
- D. Install at an angle, first by lining up the I/O ports on the M/B with I/O plate (Fig. 9).
- E. Once holes are lined up, set M/B on standoffs and stakes, make sure the M/B is seated properly and fasten M/B using hex head screws. Note-make sure stake at A3 hole is oriented correctly (M/B mounting screw holes will vary with manufacturer. Please refer to M/B user manual for more details.) Connect wires as directed in M/B user manual.
- G. Reinstall M/B mounting plate and swing into Place.

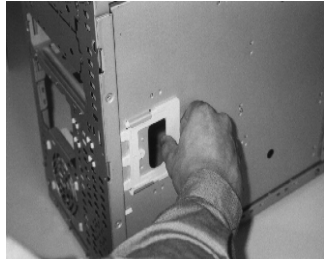


Fig:8

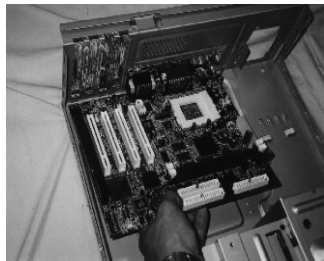


Fig:9

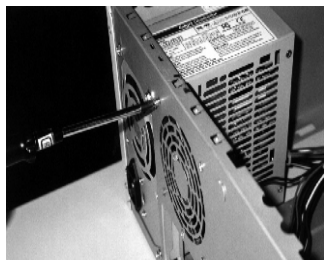


Fig:10

Step 6. Install the power supply (P/S)

Slide in to P/S area and fasten with hex head screws (Fig. 10).

Step 7. Reinstall top cover

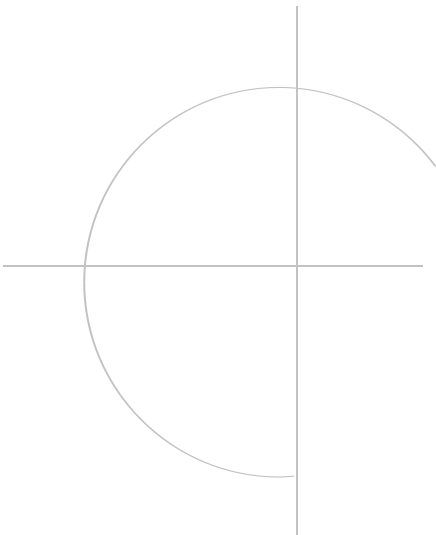
A. Orient top cover and spread sides.

Slide vertically down and make sure slide fasteners guides are properly set in the rails.

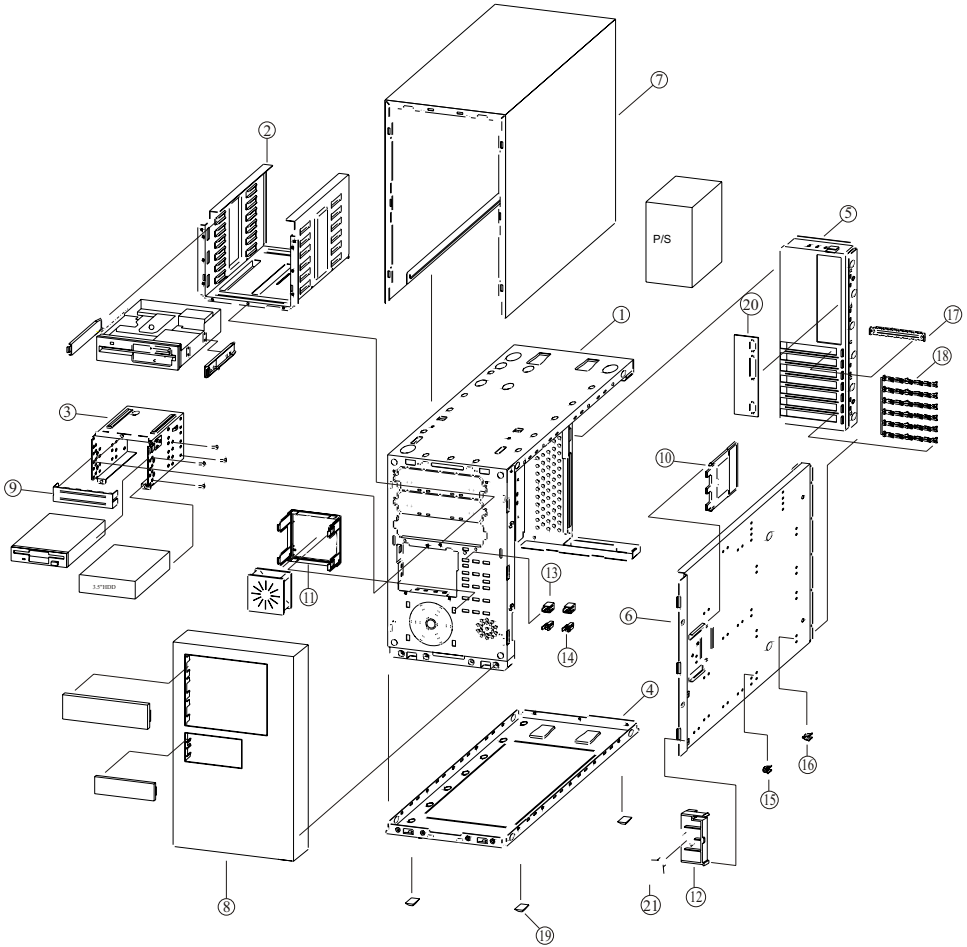
B. Once top cover is set properly on the rails, slide away from you towards back of chassis to close the top cover. Use hex head screws to fasten top cover to chassis.

Step 8. Reinstall front bezel

Snap in to place, starting with top snaps. Make sure to line up tabs on top end with the slots in the chassis.



Schematic



Part List

EN-7100		SERIES	P/N:36132791
NO	P/N	PART NAME	
1	3214101	CHASSIS	
2	3214123	5.25" DRIVE BRACKET	
3	5208089	3.5" DRIVE BRACKET	
4	3214112	SUPPORT BRACKET	
5	3214555	ADAPTER BRACKET	
6	3214145	M/B MOUNTING PLATE	
7	3214544	COVER	
8	*****	BEZEL	
9	3212514	3.5" EMI CLIP	
10	3132621	M/B LATCH	
11	*5405126	FAN AND FAN HOLDER	
12	3132643	CARD GUIDE BRACKET (A.B.S)	
13	3132596	SWITCH HOLDER	
14	3408384	LED HOLDER	
15	3214566	M/B STAKE -1 (SCREWED)	
16	3214602	M/B STAKE -2 (HOOKED)	
17	3214577	ADAPTER PLATE	
18	3214624	ADAPTER EMI CLIP	
19	3132574	RUBBER FOOT	
20	*32140542	I/O PLATE	
21	3401723	SPEAKER	
EN-7100	SERIES	ACCESSORY	PARST LIST
NO	P/N	PART NAME	
A	5208012	SLIDE GUIDE	
B	3214566	M/B STAKE-1 (SCREWED)	
C	3214602	M/B STAKE-2 (HOOKED)	
D	3500851	SCREW-PAN HEAD #6-32*5	
E	3501171	SCREW-HEX HEAD #6-32	
F	3501592	SCREW-PAN HEAD M3*5	
G	3602055	POLYBAG 8*12	
I	3602102	INNER BOX	