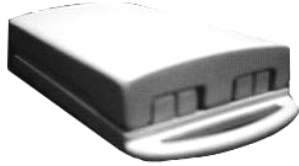
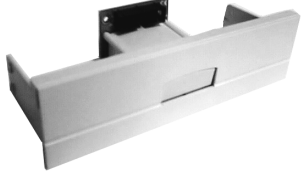
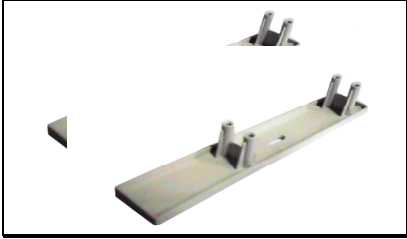



Install the KeyBIOS kit

KeyBIOS is a user friendly device that expands the use of onboard ROM BIOS beyond its current limitation. KeyBIOS is designed exclusively for use on the mainboard with an AIR Bus interface. (*AIR bus* is the proprietary interface and it can be found only on the AZZA mainboard.). If you found there is the AIR Bus interface designed on the mainboard, then you can use the KeyBIOS in your PC system.

Basically, there will be different software installed in the KeyBIOS and they will provide different features. Before you can start to use the KeyBIOS, you have to install the KeyBIOS kit on your PC system so that it will communicate with the mainboard properly.

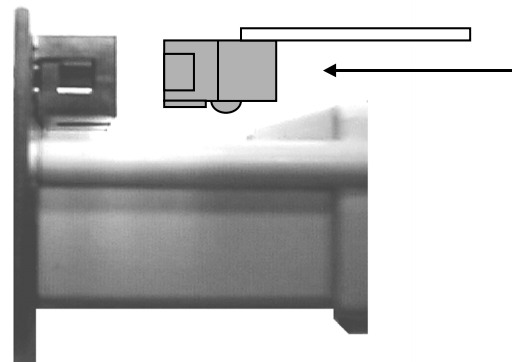
Your KeyBIOS kit contains the following items:

 <p>1. One KeyBIOS module</p>	 <p>2. One KeyBIOS panel.</p>
 <p>3. One set of HDD mounting bracket</p>	 <p>4. Flat cable</p>
<p>5. One set of screw (10 pcs)</p>	<p>6. Installation program</p>
<p>7. Installation manual.</p>	

How to assemble your KeyBIOS panel:

Step 1. Flat cable connection:

There is the flat cable included in the KeyBIOS panel kit. The flat cable will be used to connect the KeyBIOS and the AIR Bus interface on the mainboard. You may connect either end of the flat cable with the connector on the KeyBIOS panel as shown in the diagram.



Connect the flat cable to the connector at the back of KeyBIOS Panel

Step 2. Fixing the HDD mounting brackets:

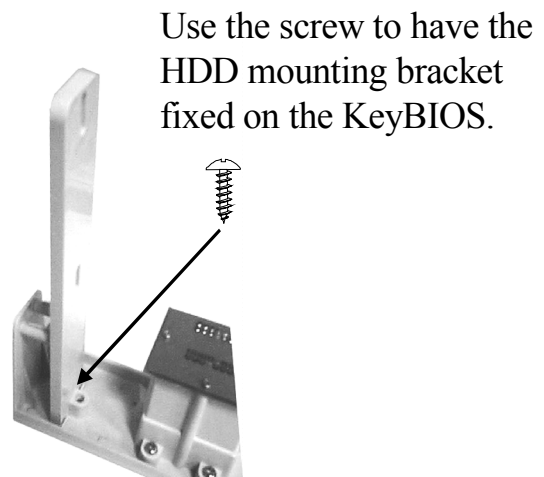
A set of HDD mounting bracket is provided in the package, which allows you to mount a hard disk drive onto the KeyBIOS panel.

This is only necessary when you have run out of the drive bay for either KeyBIOS panel or hard disk drive on your PC system.

When there is enough drive bay in you PC system and you do not have any problem when installing the KeyBIOS or the hard disk drive. In this case, you may skip Step 2a, Step 2b and Step 2c of the installation procedures mentioned below.

Step 2a. Install the HDD mounting brackets:

Use the screw provided in the KeyBIOS package to fix the HDD mounting bracket onto the KeyBIOS panel as shown in the diagram.



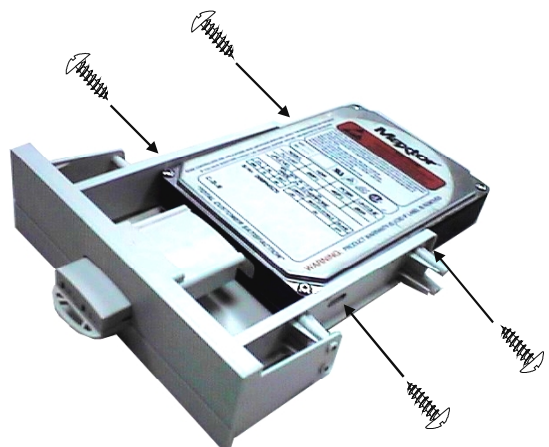
Step 2b. Install the HDD mounting brackets onto the KeyBIOS panel:

Once the HDD mounting bracket has been fixed onto the KeyBIOS panel, it should appear to be similar with the fully assembled KeyBIOS panel as shown in the diagram.



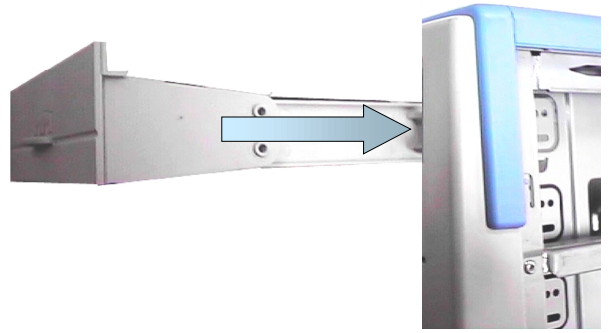
Step 2c. Fixing the hard disk drive onto the KeyBIOS panel

Align the mounting hole of the hard disk drive with the four holes at the sides of two mounting brackets. Tighten the hard disk drive on to the KeyBIOS panel by fixing the HDD's screws into the mounting holes as shown in the diagram.



Step 3. Insert the KeyBIOS panel into the PC system.

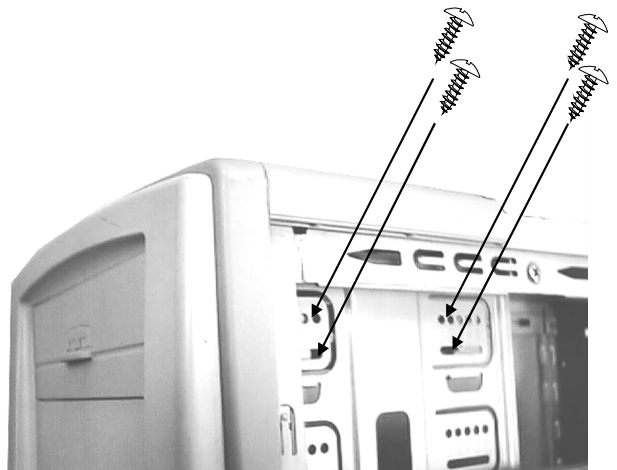
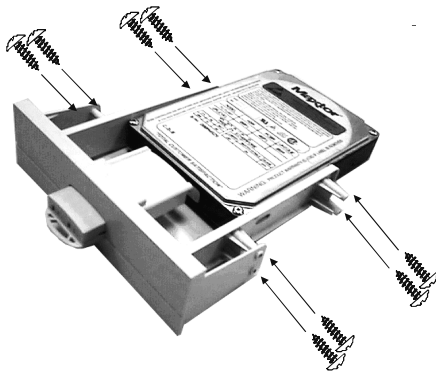
Insert the KeyBIOS panel into an unused 5.25" drive bay by sliding it into your PC system as shown in the diagram:



Slide the module into the 5.25" drive bay

Step 4. Secure the KeyBIOS panel onto the drive bay of the PC system.

Secure your KeyBIOS panel by tightening both sides with screws. Please refer to the illustrated diagram for details:



Step 8. Connect the KeyBIOS panel into the AIR Bus interface.

When you have installed the KeyBIOS kit into the 5.25" drive bay of your PC system, plug the unconnected end of the flat cable onto the AIR Bus interface of your mainboard as shown in the diagram.

When you have finished the installation above, you may start to refer to the user's manual of the KeyBIOS and start to test the function of the KeyBIOS.