



# *AM2XLI-eSATA2*

## User Manual

Version 1.0

Published April 2006

Copyright©2006 ASRock INC. All rights reserved.

---

### **Copyright Notice:**

No part of this manual may be reproduced, transcribed, transmitted, or translated in any language, in any form or by any means, except duplication of documentation by the purchaser for backup purpose, without written consent of ASRock Inc.

Products and corporate names appearing in this manual may or may not be registered trademarks or copyrights of their respective companies, and are used only for identification or explanation and to the owners' benefit, without intent to infringe.

### **Disclaimer:**

Specifications and information contained in this manual are furnished for informational use only and subject to change without notice, and should not be constructed as a commitment by ASRock. ASRock assumes no responsibility for any errors or omissions that may appear in this manual.

With respect to the contents of this manual, ASRock does not provide warranty of any kind, either expressed or implied, including but not limited to the implied warranties or conditions of merchantability or fitness for a particular purpose.

In no event shall ASRock, its directors, officers, employees, or agents be liable for any indirect, special, incidental, or consequential damages (including damages for loss of profits, loss of business, loss of data, interruption of business and the like), even if ASRock has been advised of the possibility of such damages arising from any defect or error in the manual or product.



This device complies with Part 15 of the FCC Rules. Operation is subject to the following two conditions:

- (1) this device may not cause harmful interference, and
- (2) this device must accept any interference received, including interference that may cause undesired operation.

**ASRock Website: <http://www.asrock.com>**

---

## Contents

<b>1. Introduction .....</b>	<b>5</b>
1.1 Package Contents .....	5
1.2 Specifications .....	6
1.3 Minimum Hardware Requirement Table for Windows® Vista™ Premium and Basic Logo .....	9
1.4 Supported PCI Express VGA Card List for Dual Graphics XLI Mode .....	10
1.5 Motherboard Layout .....	11
1.6 ASRock 8CH_eSATAII I/O .....	12
<b>2. Installation .....</b>	<b>13</b>
Pre-installation Precautions .....	13
2.1 CPU Installation .....	14
2.2 Installation of CPU Fan and Heatsink .....	14
2.3 Installation of Memory Modules (DIMM) .....	15
2.4 Expansion Slots (PCI and PCIE Slots) .....	17
2.5 Dual Graphics Feature .....	18
2.6 Dual Graphics XLI Operation Guide .....	19
2.7 Jumpers Setup .....	22
2.8 Onboard Headers and Connectors .....	22
2.9 HDMI_SPDIF Header Connection Guide .....	28
2.10 eSATAII Interface Introduction .....	29
2.11 SATAII Hard Disk Setup Guide .....	32
2.12 Serial ATA (SATA) / Serial ATAII (SATAII) Hard Disks Installation .....	33
2.13 Driver Installation Guide .....	33
2.14 Hot Plug and Hot Swap Functions for SATA / SATAII HDDs and eSATAII Devices .....	34
2.15 Using SATA / SATAII HDDs With RAID Functions .....	35
2.16 Using SATA / SATAII HDDs Without RAID Functions .....	36
2.17 Untied Overclocking Technology .....	36
<b>3. BIOS SETUP UTILITY .....</b>	<b>37</b>
3.1 Introduction .....	37
3.1.1 BIOS Menu Bar .....	37
3.1.2 Navigation Keys .....	38
3.2 Main Screen .....	38
3.3 Advanced Screen .....	39
3.3.1 CPU Configuration .....	40
3.3.2 Chipset Configuration .....	42

---

3.3.3	ACPI Configuration .....	44
3.3.4	IDE Configuration .....	45
3.3.5	PCIPnP Configuration .....	47
3.3.6	Floppy Configuration .....	48
3.3.7	Super IO Configuration .....	48
3.3.8	USB Configuration .....	49
3.4	Hardware Health Event Monitoring Screen .....	50
3.5	Boot Screen .....	51
3.5.1	Boot Settings Configuration .....	51
3.6	Security Screen .....	52
3.7	Exit Screen .....	53
<b>4.</b>	<b>Software Support .....</b>	<b>54</b>
4.1	Install Operating System .....	54
4.2	Support CD Information .....	54
4.2.1	Running Support CD .....	54
4.2.2	Drivers Menu .....	54
4.2.3	Utilities Menu .....	54
4.2.4	Contact Information .....	54
	<b>APPENDIX: AMD's Cool 'n' Quiet™ Technology .....</b>	<b>55</b>

---

# 1. Introduction

Thank you for purchasing ASRock **AM2XLI-eSATA2** motherboard, a reliable motherboard produced under ASRock's consistently stringent quality control. It delivers excellent performance with robust design conforming to ASRock's commitment to quality and endurance.

In this manual, chapter 1 and 2 contain introduction of the motherboard and step-by-step guide to the hardware installation. Chapter 3 and 4 contain the configuration guide to BIOS setup and information of the Support CD.



Because the motherboard specifications and the BIOS software might be updated, the content of this manual will be subject to change without notice. In case any modifications of this manual occur, the updated version will be available on ASRock website without further notice. You may find the latest VGA cards and CPU support lists on ASRock website as well. ASRock website <http://www.asrock.com>

## 1.1 Package Contents

- 1 x ASRock **AM2XLI-eSATA2** Motherboard  
(ATX Form Factor: 12.0-in x 9.6-in, 30.5 cm x 24.4 cm)
- 1 x ASRock **AM2XLI-eSATA2** Quick Installation Guide
- 1 x ASRock **AM2XLI-eSATA2** Support CD
- 1 x Ultra ATA 66/100/133 IDE Ribbon Cable (80-conductor)
- 1 x 3.5-in Floppy Drive Ribbon Cable
- 4 x Serial ATA (SATA) Data Cables (Optional)
- 2 x Serial ATA (SATA) HDD Power Cables (Optional)
- One HDMI\_SPDIF Cable (Optional)
- 1 x ASRock 8CH\_eSATAII I/O Shield
- 1 x ASRock Graphics Bridge
- 1 x USB Bracket

## 1.2 Specifications

<b>Platform</b>	- ATX Form Factor: 12.0-in x 9.6-in, 30.5 cm x 24.4 cm
<b>CPU</b>	- AM2 940-Pin Socket Supporting AMD Athlon™ 64 / 64FX / 64X2 and Sempron™ Processors - Supports AMD's Cool 'n' Quiet™ Technology (see <b>CAUTION 1</b> ) - FSB 1000 MHz (2.0 GT/s) - Supports Untied Overclocking Technology (see <b>CAUTION 2</b> ) - Supports Hyper-Transport Technology
<b>Chipset</b>	- ULI® M1697
<b>Memory</b>	- Dual Channel DDRII Memory Technology (see <b>CAUTION 3</b> ) - 4 x DDRII DIMM slots - Support DDRII800/667/533 - Max. capacity: 8GB
<b>Hybrid Booster</b>	- CPU Frequency Stepless Control (see <b>CAUTION 4</b> ) - ASRock U-COP (see <b>CAUTION 5</b> ) - Boot Failure Guard (B.F.G.)
<b>Expansion Slot</b>	- 3 x PCI slots - 1 x PCI Express x16 / x8 slot - 1 x PCI Express x8 slot - 2 x PCI Express x1 slots - Supports Dual Graphics XLI (see <b>CAUTION 6</b> )
<b>Audio</b>	- Realtek ALC888 7.1channel CODEC with High Definition Audio
<b>LAN</b>	- Realtek PHY RTL8201CL - Speed: 10/100 Ethernet - Supports Wake-On-LAN
<b>Rear Panel I/O</b>	ASRock 8CH_eSATAII I/O - 1 x PS/2 Mouse Port - 1 x PS/2 Keyboard Port - 1 x Serial Port: COM1 - 1 x Parallel Port (ECP/EPP Support) - 2 x Ready-to-Use USB 2.0 Ports - 2 x eSATAII Ports - 1 x RJ-45 LAN Port - HD Audio Jack: Side Speaker/Rear Speaker/Central Bass/Line in/Front Speaker/Microphone (see <b>CAUTION 7</b> )

<b>Connector</b>	<ul style="list-style-type: none"> <li>- 4 x Serial ATAII 3.0Gb/s connectors, support RAID (RAID 0, 1, 0+1, JBOD, 5), NCQ, AHCI and "Hot Plug" functions (see <b>CAUTION 8</b>)</li> <li>- 2 x eSATAII 3.0Gb/s connectors (shared with 2 SATAII connectors), support NCQ, AHCI and "Hot Plug" function (see <b>CAUTION 9</b>)</li> <li>- 2 x ATA133 IDE connectors (support 4 x IDE devices)</li> <li>- 1 x Floppy connector</li> <li>- 1 x IR header</li> <li>- 1 x Game header</li> <li>- 1 x HDMI_SPDIF header</li> <li>- CPU/Chassis FAN connector</li> <li>- 20 pin ATX power connector</li> <li>- 4 pin 12V power connector</li> <li>- SLI/XFIRE power connector</li> <li>- CD in header</li> <li>- Front panel audio connector</li> <li>- 3 x USB 2.0 headers (support 6 USB 2.0 ports) (see <b>CAUTION 10</b>)</li> </ul>
<b>BIOS Feature</b>	<ul style="list-style-type: none"> <li>- 4Mb AMI BIOS</li> <li>- AMI Legal BIOS</li> <li>- Supports "Plug and Play"</li> <li>- ACPI 1.1 Compliance Wake Up Events</li> <li>- Supports jumperfree</li> <li>- SMBIOS 2.3.1 Support</li> </ul>
<b>Support CD</b>	<ul style="list-style-type: none"> <li>- Drivers, Utilities, AntiVirus Software (Trial Version)</li> </ul>
<b>Hardware Monitor</b>	<ul style="list-style-type: none"> <li>- CPU Temperature Sensing</li> <li>- Motherboard Temperature Sensing</li> <li>- CPU Overheat Shutdown to Protect CPU Life</li> <li>- CPU Fan Tachometer</li> <li>- Chassis Fan Tachometer</li> <li>- CPU Quiet Fan</li> <li>- Voltage Monitoring: +12V, +5V, +3.3V, Vcore</li> </ul>
<b>OS</b>	<ul style="list-style-type: none"> <li>- Microsoft® Windows® 2000/XP/XP 64-bit/Vista™ compliant (see <b>CAUTION 11</b>)</li> </ul>
<b>Certifications</b>	<ul style="list-style-type: none"> <li>- FCC, CE, Microsoft® WHQL Certificated</li> </ul>

## **CAUTION!**

1. For power-saving's sake, it is strongly recommended to enable AMD's Cool 'n' Quiet™ technology under Windows system. See APPENDIX on page 55 to enable AMD's Cool 'n' Quiet™ technology.
2. This motherboard supports Untied Overclocking Technology. Please read "Untied Overclocking Technology" on page 36 for details.
3. This motherboard supports Dual Channel Memory Technology. Before you implement Dual Channel Memory Technology, make sure to read the installation guide of memory modules on page 15 for proper installation.
4. Although this motherboard offers stepless control, it is not recommended to perform over-clocking. Frequencies other than the recommended CPU bus frequencies may cause the instability of the system or damage the CPU.
5. While CPU overheat is detected, the system will automatically shutdown. Before you resume the system, please check if the CPU fan on the motherboard functions properly and unplug the power cord, then plug it back again. To improve heat dissipation, remember to spray thermal grease between the CPU and the heatsink when you install the PC system.
6. This motherboard supports Dual Graphics XLI technology, please read "Dual Graphics Feature" on page 18 for jumper settings. PCIE4 slot is intended for Dual Graphics XLI function. If you plan to install only one PCI Express VGA card to this motherboard, please install it to PCIE2 slot. For the information of the compatible Dual Graphics XLI Mode PCI Express VGA cards, please refer to the "Supported PCI Express VGA Card List for Dual Graphics XLI Mode" on page 10. For the proper installation of PCI Express VGA card, please refer to the installation guide on page 17.
7. For microphone input, this motherboard supports both stereo and mono modes. For audio output, this motherboard supports 2-channel, 4-channel, 6-channel, and 8-channel modes. Please check the table on page 12 for proper connection.
8. Before installing SATAII hard disk to SATAII connector, please read the "SATAII Hard Disk Setup Guide" on page 32 to adjust your SATAII hard disk drive to SATAII mode. Besides, you are allowed to downgrade the SATAII hard disk to SATA hard disk (from SATAII 3Gb/s down to SATA 1.5Gb/s), and connect it to the SATAII connector. You can also connect SATA hard disk to SATAII connector directly.
9. This motherboard supports eSATAII interface, the external SATAII specification. Please read "eSATAII Interface Introduction" on page 29 for details about eSATAII and eSATAII installation procedures. (Port Multiplier Technology is not supported with eSATAII interface on this motherboard.)
10. Power Management for USB 2.0 works fine under Microsoft® Windows® Vista™ / XP 64-bit / XP SP1 or SP2 / 2000 SP4.
11. Microsoft® Windows® Vista™ driver is not ready yet. We will update it to our website in the future. Please visit our website for Microsoft® Windows® Vista™ driver and related information.  
ASRock website <http://www.asrock.com>



---

### 1.3 Minimum Hardware Requirement Table for Windows® Vista™ Premium and Basic Logo

For system integrators and users who purchase this motherboard and plan to submit Windows® Vista™ Premium and Basic logo, please follow the below table for minimum hardware requirement. Please adopt the CPU, memory, and VGA that we suggest.

CPU	Sempron 2800+
Memory	512MB Single Channel
VGA	DX9.0 with WDDM Driver
	with 128bit VGA memory (Premium)
	with 64bit VGA memory (Basic)

---

## 1.4 Supported PCI Express VGA Card List for Dual Graphics XLI Mode

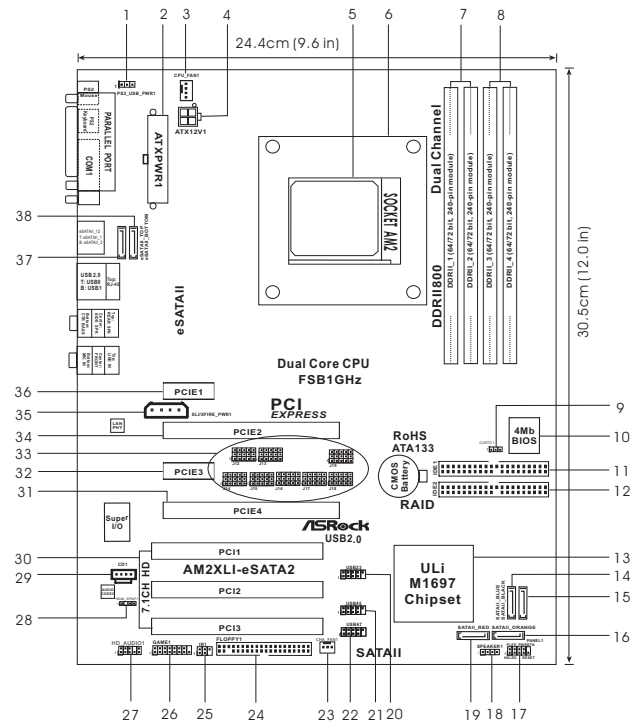
(for Windows® XP / XP 64-bit only)

Graphics Chip Vendor	Model Name	Chipset Name	Driver
NVIDIA	ASUS EN6600	GeForce 6600	81.98
	ASUS EN6600GT Series	GeForce 6600GT	81.98
	ASUS EN6800LE	GeForce 6800LE	81.98
	ASUS EN6800GT	GeForce 6800GT	81.98
	ASUS EN7800GTX/2DHTV	GeForce 7800GTX	81.98

For the latest updates of the supported PCI Express VGA card list for Dual Graphics XLI Mode, please visit our website for details.

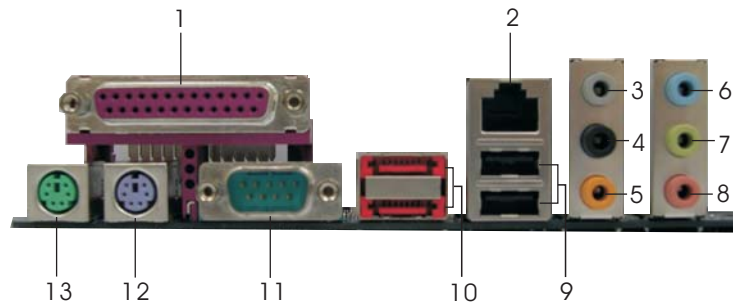
ASRock website: <http://www.asrock.com/support/index.htm>

## 1.5 Motherboard Layout



- |    |  |    |                                       |
|----|--|----|---------------------------------------|
| 1  | PS2_USB_PWR1 Jumper  | 19 | Serial ATAII Connector (SATAII_RED)   |
| 2  | ATX Power Connector (ATXPWR1)  | 20 | USB 2.0 Header (USB23, Blue)          |
| 3  | CPU Fan Connector (CPU_FAN1)   | 21 | USB 2.0 Header (USB45, Blue)          |
| 4  | ATX 12V Power Connector (ATX12V1)  | 22 | USB 2.0 Header (USB67, Blue)          |
| 5  | AM2 940-Pin CPU Socket   | 23 | Chassis Fan Connector (CHA_FAN1)      |
| 6  | CPU Heatsink Retention Module  | 24 | Floppy Connector (FLOPPY1)            |
| 7  | 2 x 240-pin DDRII DIMM Slots<br>(Dual Channel A: DDRII_1, DDRII_2; Yellow) | 25 | Infrared Module Header (IR1)          |
| 8  | 2 x 240-pin DDRII DIMM Slots<br>(Dual Channel B: DDRII_3, DDRII_4; Orange) | 26 | Game Port Header (GAME1)              |
| 9  | Clear CMOS Jumper (CLRRTC1)  | 27 | Front Panel Audio Header (HD_AUDIO1)  |
| 10 | Flash Memory   | 28 | HDMI_SPDIF Header (HDMI_SPDIF1)       |
| 11 | Primary IDE Connector (IDE1, Blue)   | 29 | Internal Audio Connector: CD1 (Black) |
| 12 | Secondary IDE Connector (IDE2, Black)                                      | 30 | PCI Slots (PCI1-3)                    |
| 13 | ULi M1697 Single Chip  | 31 | PCI Express x8 Slot (PCIE4)           |
| 14 | Serial ATAII Connector (SATAII_BLUE)                                       | 32 | PCI Express x1 Slot (PCIE3)           |
| 15 | Serial ATAII Connector (SATAII_BLACK)                                      | 33 | J12 - J19 Jumpers                     |
| 16 | Serial ATAII Connector (SATAII_ORANGE)                                     | 34 | PCI Express x16 / x8 Slot (PCIE2)     |
| 17 | System Panel Header (PANEL1)   | 35 | SLI / XFIRE Power Connector           |
| 18 | Chassis Speaker Header (SPEAKER 1)   | 36 | PCI Express x1 Slot (PCIE1)           |
|    |  | 37 | eSATAII Connector (eSATAII_TOP)       |
|    |  | 38 | eSATAII Connector (eSATAII_BOTTOM)    |

## 1.6 ASRock 8CH\_eSATAII I/O




- |                           |                                |
|---------------------------|--------------------------------|
| 1 Parallel Port           | 8 Microphone (Pink)            |
| 2 RJ-45 Port              | 9 USB 2.0 Ports (USB01)        |
| 3 Side Speaker (Gray)     | 10 eSATAII Ports               |
| 4 Rear Speaker (Black)    | 11 COM Port                    |
| 5 Central / Bass (Orange) | 12 PS/2 Keyboard Port (Purple) |
| 6 Line In (Light Blue)    | 13 PS/2 Mouse Port (Green)     |
| *7 Front Speaker (Lime)   |                                |

\* If you use 2-channel speaker, please connect the speaker's plug into "Front Speaker Jack". See the table below for connection details in accordance with the type of speaker you use.

**TABLE for Audio Output Connection**

Audio Output Channels	Front Speaker (No. 7)	Rear Speaker (No. 4)	Central / Bass (No. 5)	Side Speaker (No. 3)
2	√	--	--	--
4	√	√	--	--
6	√	√	√	--
8	√	√	√	√

\* To enable Multi-Streaming function, you need to connect a front panel audio cable to the front panel audio header. After restarting your computer, you will find "Mixer" tool on your system. Please select "Mixer ToolBox" , click "Enable playback multi-streaming", and click "ok". Choose "2CH", "4CH", "6CH", or "8CH" and then you are allowed to select "Realtek HDA Primary output" to use Rear Speaker, Central/Bass, and Front Speaker, or select "Realtek HDA Audio 2nd output" to use front panel audio.

---

## 2. Installation

**AM2XLI-eSATA2** is an ATX form factor (12.0-in x 9.6-in, 30.5 cm x 24.4 cm) motherboard. Before you install the motherboard, study the configuration of your chassis to ensure that the motherboard fits into it.

### Pre-installation Precautions

Take note of the following precautions before you install motherboard components or change any motherboard settings.



Before you install or remove any component, ensure that the power is switched off or the power cord is detached from the power supply. Failure to do so may cause severe damage to the motherboard, peripherals, and/or components.

1. Unplug the power cord from the wall socket before touching any component.
2. To avoid damaging the motherboard components due to static electricity, NEVER place your motherboard directly on the carpet or the like. Also remember to use a grounded wrist strap or touch a safety grounded object before you handle components.
3. Hold components by the edges and do not touch the ICs.
4. Whenever you uninstall any component, place it on a grounded anti-static pad or in the bag that comes with the component.
5. When placing screws into the screw holes to secure the motherboard to the chassis, please do not over-tighten the screws! Doing so may damage the motherboard.

---

## 2.1 CPU Installation

- Step 1. Unlock the socket by lifting the lever up to a 90° angle.
- Step 2. Position the CPU directly above the socket such that the CPU corner with the golden triangle matches the socket corner with a small triangle.
- Step 3. Carefully insert the CPU into the socket until it fits in place.

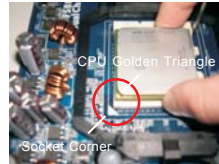


The CPU fits only in one correct orientation. DO NOT force the CPU into the socket to avoid bending of the pins.

- Step 4. When the CPU is in place, press it firmly on the socket while you push down the socket lever to secure the CPU. The lever clicks on the side tab to indicate that it is locked.



**STEP 1:**  
Lift Up The Socket Lever



**STEP 2 / STEP 3:**  
Match The CPU Golden Triangle  
To The Socket Corner



**STEP 4:**  
Push Down And Lock  
The Socket Lever

## 2.2 Installation of CPU Fan and Heatsink

After you install the CPU into this motherboard, it is necessary to install a larger heatsink and cooling fan to dissipate heat. You also need to spray thermal grease between the CPU and the heatsink to improve heat dissipation. Make sure that the CPU and the heatsink are securely fastened and in good contact with each other. Then connect the CPU fan to the CPU FAN connector (CPU\_FAN1, see Page 11, No. 3). For proper installation, please kindly refer to the instruction manuals of the CPU fan and the heatsink.

## 2.3 Installation of Memory Modules (DIMM)

**AM2XLI-eSATA2** motherboard provides four 240-pin DDRII (Double Data Rate II) DIMM slots, and supports Dual Channel Memory Technology. For dual channel configuration, you always need to install **identical** (the same brand, speed, size and chip-type) DDRII DIMM pair in the slots of the same color. In other words, you have to install **identical** DDRII DIMM pair in **Dual Channel A** (DDRII\_1 and DDRII\_2; Yellow slots; see p.11 No.7) or **identical** DDRII DIMM pair in **Dual Channel B** (DDRII\_3 and DDRII\_4; Orange slots; see p.11 No.8), so that Dual Channel Memory Technology can be activated. This motherboard also allows you to install four DDRII DIMMs for dual channel configuration, and please install **identical** DDRII DIMMs in all four slots. You may refer to the Dual Channel Memory Configuration Table below.

**Dual Channel Memory Configurations**

	DDRII_1 (Yellow Slot)	DDRII_2 (Yellow Slot)	DDRII_3 (Orange Slot)	DDRII_4 (Orange Slot)
(1)	Populated	Populated	-	-
(2)	-	-	Populated	Populated
(3)*	Populated	Populated	Populated	Populated

\* For the configuration (3), please install **identical** DDRII DIMMs in all four slots.



1. If you want to install two memory modules, for optimal compatibility and reliability, it is recommended to install them in the slots of the same color. In other words, install them either in the set of yellow slots (DDRII\_1 and DDRII\_2), or in the set of orange slots (DDRII\_3 and DDRII\_4).
2. If only one memory module or three memory modules are installed in the DDRII DIMM slots on this motherboard, it is unable to activate the Dual Channel Memory Technology.
3. If a pair of memory modules is NOT installed in the same Dual Channel, for example, installing a pair of memory modules in DDRII\_1 and DDRII\_3, it is unable to activate the Dual Channel Memory Technology .
4. It is not allowed to install a DDR memory module into DDRII slot; otherwise, this motherboard and DIMM may be damaged.

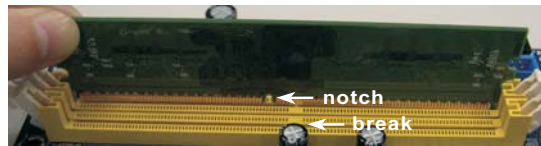
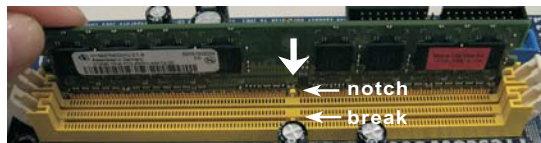
---

## Installing a DIMM



Please make sure to disconnect power supply before adding or removing DIMMs or the system components.

- Step 1. Unlock a DIMM slot by pressing the retaining clips outward.
- Step 2. Align a DIMM on the slot such that the notch on the DIMM matches the break on the slot.



The DIMM only fits in one correct orientation. It will cause permanent damage to the motherboard and the DIMM if you force the DIMM into the slot at incorrect orientation.

- Step 3. Firmly insert the DIMM into the slot until the retaining clips at both ends fully snap back in place and the DIMM is properly seated.



---

## 2.4 Expansion Slots (PCI Slots and PCIE Slots)

There are 3 PCI slots and 4 PCI Express slots on **AM2XLI-eSATA2** motherboard.

**PCI Slots:** PCI slots are used to install expansion cards that have the 32-bit PCI interface.

**PCIE Slots:** PCIE1 / PCIE3 (PCIE x1 slot) is used for PCI Express cards, such as Gigabit LAN card, SATA2 card, etc.

PCIE2 (PCIE x16 / x8 slot) is used for PCI Express cards with x16 lane width graphics cards.

PCIE4 (PCIE x8 slot) is used to install PCI Express expansion cards. For the information of the compatible Dual Graphics XLI Mode PCI Express VGA cards, please refer to the "Supported PCI Express VGA Card List for Dual Graphics XLI Mode" on page 10. Please check the jumper settings on page 18 for different functions.



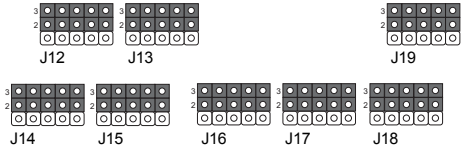
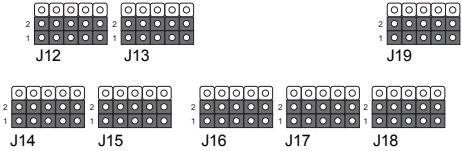
1. This motherboard supports Dual Graphics XLI technology. You can install one PCI Express x16 graphics card to PCIE2 and the other PCI Express x16 graphics card to PCIE4 to enable Dual Graphics XLI feature. Dual Graphics XLI technology is only supported with Windows® XP and XP 64-bit OS on this motherboard.
2. PCIE4 slot is intended for Dual Graphics XLI function. If you plan to install only one PCI Express VGA card to this motherboard, please install it to PCIE2 slot.

### Installing an expansion card

- Step 1. Before installing the expansion card, please make sure that the power supply is switched off or the power cord is unplugged. Please read the documentation of the expansion card and make necessary hardware settings for the card before you start the installation.
- Step 2. Remove the system unit cover (if your motherboard is already installed in a chassis).
- Step 3. Remove the bracket facing the slot that you intend to use. Keep the screws for later use.
- Step 4. Align the card connector with the slot and press firmly until the card is completely seated on the slot.
- Step 5. Fasten the card to the chassis with screws.
- Step 6. Replace the system cover.

## 2.5 Dual Graphics Feature

This motherboard supports Dual Graphics Technology. When installing the add-on VGA cards to this motherboard, you are allowed to choose two different ways to decide the function of PCIE2 slot and PCIE4 slot. The default value of this feature is to enable PCIE2 slot (PCI Express x16). You can also adjust the jumpers according to the below table to enable PCIE2 slot (PCI Express x8) and PCIE4 slot (PCI Express x8). In other words, you are able to adjust the jumpers to enjoy the benefit of Dual Graphics feature. Please refer to the table below for the correct jumper settings.

Function	Jumper Settings
Enable PCIE2 (PCIE x16) / (Default)	
Enable PCIE2 (PCIE x8) / PCIE4 (PCIE x8)	

## 2.6 Dual Graphics XLI Operation Guide

This motherboard supports Dual Graphics XLI technology that allows you to install two identical Dual Graphics XLI enabled PCI Express x16 graphics cards. Currently, Dual Graphics XLI technology supports Windows® XP and XP 64-bit operating system. Please follow the installation procedures in this section.



### Dual Graphics XLI Technology Requirements

1. You should have two identical Dual Graphics XLI-ready graphics cards that are NVIDIA certified.
2. Make sure that your graphics card driver supports Dual Graphics XLI technology. Please download and use NVIDIA graphics card driver version 81.98 which supports Dual Graphics XLI technology from NVIDIA website. NVIDIA website: [www.nvidia.com](http://www.nvidia.com)
3. Make sure that your power supply unit (PSU) can provide at least the minimum power required by your system.

### Enjoy the benefit of Dual Graphics XLI

- Step 1. Adjust the jumpers on this motherboard to enable PCIE2 slot (PCIE x8) and PCIE4 slot (PCIE x8). Please refer to the previous section "Dual Graphics Feature" for proper jumper setting.
- Step 2. Install the identical Dual Graphics XLI-ready graphics cards that are NVIDIA certified because different types of graphics cards will not work together properly. (Even the GPU chips version shall be the same.) Insert one graphics card into PCIE2 slot and another graphics card to PCIE4 slot. Make sure that the cards are properly seated on the slots.



- Step3. If required, connect an auxiliary power source to the PCI Express graphics cards.
- Step4. Align and insert the Graphics Bridge to the goldfingers on each graphics card. Make sure that the Graphics Bridge is firmly in place.



- Step5. Connect a VGA cable or a DVI-I cable to the monitor connector and the DVI connector of the graphics card that is inserted to PCIE2 slot.
- Step6. Connect a 4-pin ATX power cable to SLI/XFIRE power connector.

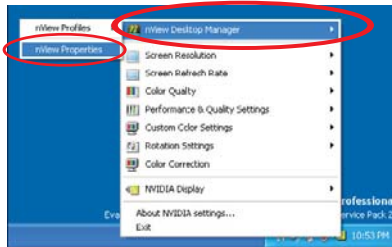


- Step7. Power on your computer and boot into OS. Install the "Dual Graphics XLI Enabled" driver of our support CD to your system. Then, reboot your system.
- Step8. Install the graphics card drivers to your system. After that, you can enable the Multi-Graphics Processing Unit (GPU) feature in the NVIDIA nView system tray utility. Please follow the below procedures to enable the multi-GPU feature.

A. Click the **NVIDIA Settings icon** on your Windows taskbar.

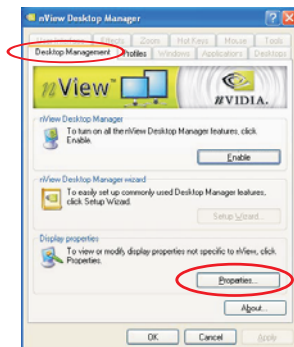


B. From the pop-up menu, select **nView Desktop Manager**, and then click **nView Properties**.

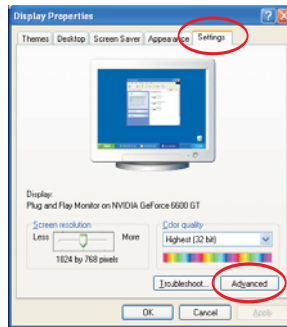


C. From the nView Desktop Manager window, select the **Desktop Management** tab.

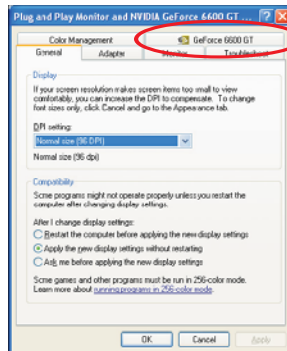
D. Click **Properties** to display the Display Properties dialog box.



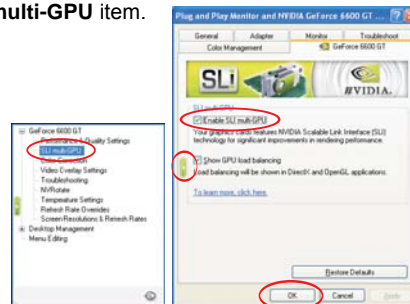
E. From the Display Properties dialog box, select the **Settings** tab then click **Advanced**.



F. Select the **NVIDIA GeForce** tab.



G. Click the slider to display the following screen, then select the **SLI multi-GPU** item.



H. Click the **Enable SLI multi-GPU** check box.

I. Click **OK** when done.

## 2.7 Jumpers Setup

The illustration shows how jumpers are setup. When the jumper cap is placed on pins, the jumper is "Short". If no jumper cap is placed on pins, the jumper is "Open". The illustration shows a 3-pin jumper whose pin1 and pin2 are "Short" when jumper cap is placed on these 2 pins.



Jumper	Setting	
PS2_USB_PWR1 (see p.11, No. 1)	<div style="display: inline-block; text-align: center;">  1_2 +5V         </div> <div style="display: inline-block; text-align: center; margin-left: 20px;">  2_3 +5VSB         </div>	Short pin2, pin3 to enable +5VSB (standby) for PS/2 or USB wake up events.

Note: To select +5VSB, it requires 2 Amp and higher standby current provided by power supply.

Clear CMOS Jumper (CLRTC1) (see p.11, No. 9)	1_2 Default	2_3 Clear CMOS

Note: CLRTC1 allows you to clear the data in CMOS. The data in CMOS includes system setup information such as system password, date, time, and system setup parameters. To clear and reset the system parameters to default setup, please turn off the computer and unplug the power cord from the power supply. After waiting for 15 seconds, use a jumper cap to short pin2 and pin3 on CLRTC1 for 5 seconds.

## 2.8 Onboard Headers and Connectors



Onboard headers and connectors are NOT jumpers. Do NOT place jumper caps over these headers and connectors. Placing jumper caps over the headers and connectors will cause permanent damage of the motherboard!

Floppy Connector  
(33-pin FLOPPY1)  
(see p.11 No. 24)



Note: Make sure the red-striped side of the cable is plugged into Pin1 side of the connector.

**Primary IDE Connector (Blue)**

(39-pin IDE1, see p.11 No. 11)



**Secondary IDE Connector (Black)**

(39-pin IDE2, see p.11 No. 12)



connect the blue end  
to the motherboard



connect the black end  
to the IDE devices

80-conductor ATA 66/100/133 cable

Note: If you use only one IDE device on this motherboard, please set the IDE device as "Master". Please refer to the instruction of your IDE device vendor for the details. Besides, to optimize compatibility and performance, please connect your hard disk drive to the primary IDE connector (IDE1, blue) and CD-ROM to the secondary IDE connector (IDE2, black).

**Serial ATA II Connectors**

(SATAII\_BLUE: see p.11, No. 14)

(SATAII\_BLACK: see p.11, No. 15)

(SATAII\_RED: see p.11, No. 19)

(SATAII\_ORANGE: see p.11, No. 16)



SATAII\_RED SATAII\_ORANGE

These four Serial ATA II (SATAII) connectors support SATA data cables for internal storage devices. The current SATA II interface allows up to 3.0 Gb/s data transfer rate.

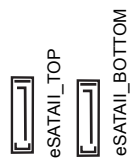


SATAII\_RED and SATAII\_ORANGE connectors can be used for internal storage devices or be connected to eSATAII\_BOTTOM and eSATAII\_TOP connectors with corresponding color to support eSATAII devices. Please read "eSATAII Interface Introduction" on page 29 for details about eSATAII and eSATAII installation procedures.

**eSATA II Connectors**

(eSATAII\_TOP: see p.11, No. 37)

(eSATAII\_BOTTOM: see p.11, No. 38)



These two eSATA II connectors support SATA data cables for external SATAII function. The current eSATA II interface allows up to 3.0 Gb/s data transfer rate.

**Serial ATA (SATA)**

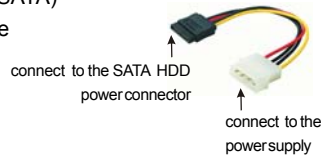
**Data Cable**

(Optional)



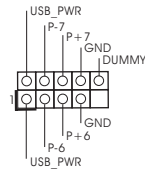
Either end of the SATA data cable can be connected to the SATA / SATAII hard disk or the SATAII connector on the motherboard. You can also use the SATA data cable to connect SATAII connectors and eSATAII connectors with corresponding color.

**Serial ATA (SATA)  
Power Cable**  
(Optional)



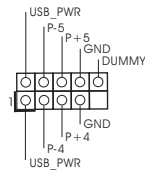
Please connect the black end of SATA power cable to the power connector on each drive. Then connect the white end of SATA power cable to the power connector of the power supply.

**USB 2.0 Headers**  
(9-pin USB67)  
(see p.11 No. 22)

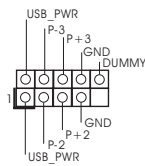


Besides two default USB 2.0 ports on the I/O panel, there are three USB 2.0 headers on this motherboard. Each USB 2.0 header can support two USB 2.0 ports.

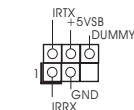
(9-pin USB45)  
(see p.11 No. 21)



(9-pin USB23)  
(see p.11 No. 20)

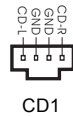


**Infrared Module Header**  
(5-pin IR1)  
(see p.11 No. 25)



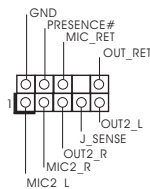
This header supports an optional wireless transmitting and receiving infrared module.

**Internal Audio Connectors**  
(4-pin CD1)  
(CD1: see p.11 No. 29)



This connector allows you to receive stereo audio input from sound sources such as a CD-ROM, DVD-ROM, TV tuner card, or MPEG card.


**Front Panel Audio Header**  
(9-pin HD\_AUDIO1)  
(see p.11 No. 27)



This is an interface for front panel audio cable that allows convenient connection and control of audio devices.

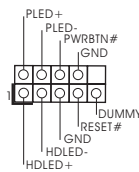




1. High Definition Audio supports Jack Sensing, but the panel wire on the chassis must support HDA to function correctly. Please follow the instruction in our manual and chassis manual to install your system.
2. If you use AC'97 audio panel, please install it to the front panel audio header as below:
  - A. Connect Mic\_IN (MIC) to MIC2\_L.
  - B. Connect Audio\_R (RIN) to OUT2\_R and Audio\_L (LIN) to OUT2\_L.
  - C. MIC\_RET and OUT\_RET are for HD audio panel only. You don't need to connect them for AC'97 audio panel.
  - D. Enter BIOS Setup Utility. Enter Advanced Settings, and then select Chipset Configuration. Set the Front Panel Control option from [Auto] to [Enabled].
  - E. Enter Windows system. Click the icon on the lower right hand taskbar to enter Realtek HD Audio Manager. Click "Audio I/O", select "Connector Settings" , choose "Disable front panel jack detection", and save the change by clicking "OK".

#### System Panel Header

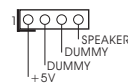
(9-pin PANEL1)  
(see p.11 No. 17)



This header accommodates several system front panel functions.

#### Chassis Speaker Header

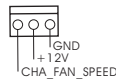
(4-pin SPEAKER 1)  
(see p.11 No. 18)



Please connect the chassis speaker to this header.

#### Chassis Fan Connector

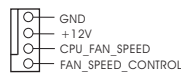
(3-pin CHA\_FAN1)  
(see p.11 No. 23)



Please connect a chassis fan cable to this connector and match the black wire to the ground pin.

#### CPU Fan Connector

(4-pin CPU\_FAN1)  
(see p.11 No. 3)



Please connect a CPU fan cable to this connector and match the black wire to the ground pin.



Though this motherboard provides 4-Pin CPU fan (Quiet Fan) support, the 3-Pin CPU fan still can work successfully even without the fan speed control function. If you plan to connect the 3-Pin CPU fan to the CPU fan connector on this motherboard, please connect it to Pin 1-3.

Pin 1-3 Connected



3-Pin Fan Installation

**ATX Power Connector**  
 (20-pin ATXPWR1)  
 (see p.11 No. 2)



Please connect an ATX power supply to this connector.

**ATX 12V Connector**  
 (4-pin ATX12V1)  
 (see p.11 No. 4)



Please connect an ATX 12V power supply to this connector.

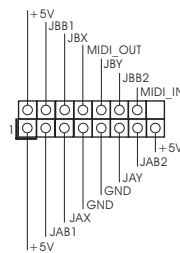
**SLI/XFIRE Power Connector**  
 (4-pin SLI/XFIRE\_POWER1)  
 (see p.11 No. 35)



SLI/XFIRE\_POWER1

It is not necessary to use this connector, but please connect it with a hard disk power connector when two graphics cards are plugged to this motherboard at the same time.

**Game Port Header**  
 (15-pin GAME1)  
 (see p.11 No. 26)



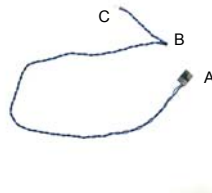
Connect a Game cable to this header if the Game port bracket is installed.

**HDMI\_SPDIF Header**  
 (3-pin HDMI\_SPDIF1)  
 (see p.11 No. 28)



HDMI\_SPDIF header, providing SPDIF audio output to HDMI VGA card, allows the system to connect HDMI Digital TV/ projector/LCD devices. Please connect the HDMI connector of HDMI VGA card to this header.

**HDMI\_SPDIF Cable**  
 (Optional)

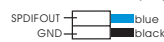


Please connect the black end (A) of HDMI\_SPDIF cable to the HDMI\_SPDIF header on the motherboard. Then connect the white end (B or C) of HDMI\_SPDIF cable to the HDMI connector of HDMI VGA card.

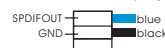
**A. black end**



**B. white end (2-pin)**



**C. white end (3-pin)**





---

USB Bracket



This USB bracket can support 2 additional USB 2.0 ports besides the I/O panel. Please connect the blue connector on the cable of this USB bracket to the USB 2.0 header (USB23, USB45, or USB67) and fasten the USB bracket to the chassis with screws.



## 2.9 HDMI\_SPDIF Header Connection Guide

HDMI (High-Definition Multi-media Interface) is an all-digital audio/video specification, which provides an interface between any compatible digital audio/video source, such as a set-top box, DVD player, A/V receiver and a compatible digital audio or video monitor, such as a digital television (DTV). A complete HDMI system requires a HDMI VGA card and a HDMI ready motherboard with a HDMI\_SPDIF header. This motherboard is equipped with a HDMI\_SPDIF header, which provides SPDIF audio output to HDMI VGA card, allows the system to connect HDMI Digital TV/projector/LCD devices. To use HDMI function on this motherboard, please carefully follow the below steps.

Step 1. Install the HDMI VGA card to the PCI Express Graphics slot on this motherboard. For the proper installation of HDMI VGA card, please refer to the installation guide on page 17.

Step 2. Connect the black end (A) of HDMI\_SPDIF cable to the HDMI\_SPDIF header (HDMI\_SPDIF1, yellow, see page 11, No. 28) on the motherboard.



Make sure to correctly connect the HDMI\_SPDIF cable to the motherboard and the HDMI VGA card according to the same pin definition. For the pin definition of HDMI\_SPDIF header and HDMI\_SPDIF cable connectors, please refer to page 26. For the pin definition of HDMI\_SPDIF connectors on HDMI VGA card, please refer to the user manual of HDMI VGA card vendor. Incorrect connection may cause permanent damage to this motherboard and the HDMI VGA card.

Step 3. Connect the white end (B or C) of HDMI\_SPDIF cable to the HDMI\_SPDIF connector of HDMI VGA card. (There are two white ends (2-pin and 3-pin) on HDMI\_SPDIF cable. Please choose the appropriate white end according to the HDMI\_SPDIF connector of the HDMI VGA card you install. Currently, the HDMI\_SPDIF connector of HDMI VGA card with ATI chip is 3-pin (C), and the HDMI\_SPDIF connector of HDMI VGA card with other vendor's chip is 2-pin (B).)



white end  
(2-pin) (B)



white end  
(3-pin) (C)



Please do not connect the white end of HDMI\_SPDIF cable to the wrong connector of HDMI VGA card or other VGA card. Otherwise, the motherboard and the VGA card may be damaged. For example, this picture shows the wrong example of connecting HDMI\_SPDIF cable to the fan connector of PCI Express VGA card. Please refer to the VGA card user manual for connector usage in advance.



Step 4. Connect the HDMI output connector on HDMI VGA card to HDMI device, such as HDTV. Please refer to the user manual of HDTV and HDMI VGA card vendor for detailed connection procedures.



Step 5. Install HDMI VGA card driver to your system.

---

## 2.10 eSATAII Interface Introduction

### ***What is eSATAII?***

This motherboard supports eSATAII interface, the external SATAII specification. eSATAII allows you to enjoy the SATAII function provided by the I/O of your computer, offering the high speed data transfer rate up to 3.0Gb/s, and the convenient mobility like USB. eSATAII is equipped with Hot Plug capability that enables you to exchange drives easily. For example, with eSATAII interface, you may simply plug your eSATAII hard disk to the eSATAII ports instead of opening your chassis to exchange your SATAII hard disk. Currently, on the market, the data transfer rate of USB 2.0 is up to 480Mb/s, and for IEEE 1394 is up to 400Mb/s. However, eSATAII provides the data transfer rate up to 3000Mb/s, which is much higher than USB 2.0 and IEEE 1394, and still keeps the convenience of Hot Plug feature. Therefore, on the basis of the advantageous transfer speed and the facilitating mobile capability, in the near future, eSATAII will replace USB 2.0 and IEEE 1394 to be a trend for external interface.

### ***How to install eSATAII?***



SATAII\_RED and  
SATAII\_ORANGE



eSATAII\_TOP and  
eSATAII\_BOTTOM

1. If you just plan to install one eSATAII device to this motherboard, it is recommended to enable the bottom eSATAII port of the I/O shield. In order to enable the bottom eSATAII port of the I/O shield, you need to connect the red SATAII connector (SATAII\_RED; see p.11 No.19) and the red eSATAII connector (eSATAII\_BOTTOM; see p.11 No.38) with a SATA data cable first. Then the bottom eSATAII port of the I/O shield is enabled.



Connect the SATA  
data cable to the red  
SATAII connector  
(SATAII\_RED)



Connect the SATA  
data cable to the red  
eSATAII connector  
(eSATAII\_BOTTOM)



2. If you plan to install two eSATAII devices to this motherboard, you need to enable both the top and the bottom eSATAII ports of the I/O shield. In order to enable the top and the bottom eSATAII ports of the I/O shield, you have to connect the red SATAII connector (SATAII\_RED; see p.11 No.19) and the red eSATAII connector (eSATAII\_BOTTOM; see p.11 No.38) with a SATA data cable first, and then connect the orange SATAII connector (SATAII\_ORANGE; see p.11 No.16) and the orange eSATAII connector (eSATAII\_TOP; see p.11 No.37) with another SATA data cable. After that, both the top and the bottom eSATAII ports of the I/O shield are enabled.



Connect the SATA data cables to both red SATAII connector (SATAII\_RED) and orange SATAII connector (SATAII\_ORANGE)

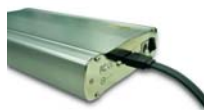


Connect the SATA data cables to both red eSATAII connector (eSATAII\_BOTTOM) and orange eSATAII connector (eSATAII\_TOP)



Please make sure to correctly connect the SATAII and eSATAII connectors with corresponding color so that the eSATAII function will work successfully.

3. Use the eSATAII device cable to connect eSATAII device and the eSATAII port of the I/O shield according to the eSATAII port that you enable.



Connect one end of the eSATAII device cable to eSATAII device

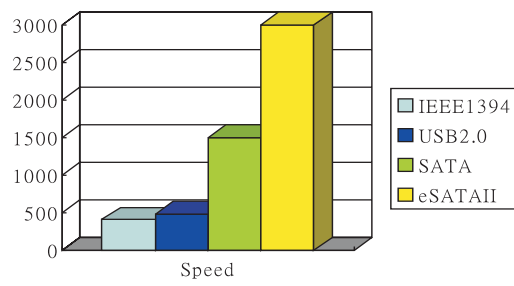


Connect the other end of the eSATAII device cable to eSATAII port of the I/O shield

---

**Comparison between eSATAII and other devices**

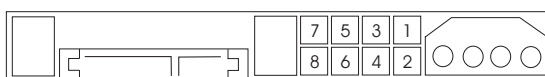
IEEE 1394	400Mb/s
USB 2.0	480Mb/s
SATA	1.5Gb/s (1500Mb/s)
eSATAII/SATAII	3.0Gb/s (3000Mb/s)



## 2.11 SATAII Hard Disk Setup Guide

Before installing SATAII hard disk to your computer, please carefully read below SATAII hard disk setup guide. Some default setting of SATAII hard disks may not be at SATAII mode, which operate with the best performance. In order to enable SATAII function, please follow the below instruction with different vendors to correctly adjust your SATAII hard disk to SATAII mode in advance; otherwise, your SATAII hard disk may fail to run at SATAII mode.

### Western Digital



If pin 5 and pin 6 are shorted, SATA 1.5Gb/s will be enabled.

On the other hand, if you want to enable SATAII 3.0Gb/s, please remove the jumpers from pin 5 and pin 6.

### SAMSUNG



If pin 3 and pin 4 are shorted, SATA 1.5Gb/s will be enabled.

On the other hand, if you want to enable SATAII 3.0Gb/s, please remove the jumpers from pin 3 and pin 4.

### HITACHI

Please use the Feature Tool, a DOS tool, for changing various ATA features. Please visit HITACHI's website for details:

<http://www.hitachigst.com/hdd/support/download.htm>



The above examples are just for your reference. For different SATAII hard disk products of different vendors, the jumper pin setting methods may not be the same. Please visit the vendors' website for the updates.



---

## 2.12 Serial ATA (SATA) / Serial ATAII (SATAII) Hard Disks Installation

This motherboard adopts ULI® M1697 chipset that supports Serial ATA (SATA) / Serial ATAII (SATAII) hard disks and RAID (RAID 0, RAID 1, RAID 0+1, JBOD, and RAID 5) functions. You may install SATA / SATAII hard disks on this motherboard for internal storage devices. This section will guide you to install the SATA / SATAII hard disks.

STEP 1: Install the SATA / SATAII hard disks into the drive bays of your chassis.

STEP 2: Connect the SATA power cable to the SATA / SATAII hard disk.

STEP 3: Connect one end of the SATA data cable to the motherboard's SATAII connector.

STEP 4: Connect the other end of the SATA data cable to the SATA / SATAII hard disk.



1. If you plan to use RAID 0, RAID 1, or JBOD functions, you need to install at least 2 SATA / SATAII hard disks. If you plan to use RAID 5 function, you need to install at least 3 SATA / SATAII hard disks. If you plan to use RAID 0+1 function, you need to install at least 4 SATA / SATAII hard disks. If you install 2 eSATAII devices, then only RAID 0, RAID 1, or JBOD functions will be enabled.
2. If you plan to use RAID functions on SATA / SATAII, SATA / SATAII HDDs must be operated in "RAID" mode.
3. "RAID" and "non-RAID" mode are options under "SATA Operation Mode" in BIOS setup. Please refer to page 44 for details.

## 2.13 Driver Installation Guide

To install the drivers to your system, please insert the support CD to your optical drive first. Then, the drivers compatible to your system can be auto-detected and listed on the support CD driver page. Please follow the order from up to bottom side to install those required drivers. Therefore, the drivers you install can work properly.

## 2.14 Hot Plug and Hot Swap Functions for SATA / SATAII HDDs and eSATAII Devices

**AM2XLI-eSATA2** motherboard supports Hot Plug and Hot Swap functions for SATA / SATAII / eSATAII Devices in RAID / AHCI mode. ULI® M1697 chipset provides hardware support for Advanced Host controller Interface (AHCI), a new programming interface for SATA host controllers developed thru a joint industry effort. AHCI also provides usability enhancements such as Hot Plug. AHCI requires appropriate software support (e.g., an AHCI driver, which is contained in our support CD).



### NOTE

#### What is Hot Plug Function?

If the SATA / SATAII HDDs are NOT set for RAID configuration, it is called “Hot Plug” for the action to insert and remove the SATA / SATAII HDDs while the system is still power-on and in working condition.

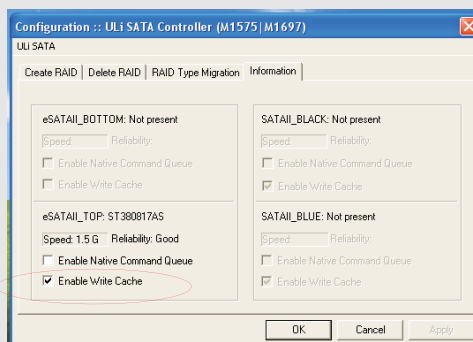
However, please note that it cannot perform Hot Plug if the OS has been installed into the SATA / SATAII HDD.

#### What is Hot Swap Function?

If SATA / SATAII HDDs are built as RAID1 then it is called “Hot Swap” for the action to insert and remove the SATA / SATAII HDDs while the system is still power-on and in working condition.

eSATAII is equipped with Hot Plug capability that enables you to exchange drives easily. For example, with eSATAII interface, you may simply plug your eSATAII devices to the eSATAII ports instead of opening your chassis to exchange your SATAII hard disk.

If you obey “safely remove hardware” mechanism like USB flash drive, you can enable eSATAII device write cache on the driver by ULi RAID configuration tools to enhance the eSATAII performance. While keeping write data to disk can be flush out when removing the eSATAII device.



---

## 2.15 Using SATA / SATAII HDDs With RAID Functions



The installation procedures for Windows Vista™ are subject to change.

If you want to install Windows® 2000, Windows® XP or Windows® XP 64-bit OS on your SATA / SATAII HDDs with RAID functions, you need to make a SATA / SATAII driver diskette before you start the OS installation.

- STEP 1: Insert the ASRock Support CD into your optical drive to boot your system.  
(Do NOT insert any floppy diskette into the floppy drive at this moment!)
- STEP 2: During POST at the beginning of system boot-up, press <F11> key, and then a window for boot devices selection appears. Please select CD-ROM as the boot device.
- STEP 3: When you see the message on the screen, “Do you want to generate Serial ATA driver diskette [YN]?”, press <Y>.
- STEP 4: Then you will see these messages,  
**Please insert a diskette into the floppy drive.**  
**WARNING! Formatting the floppy diskette will lose ALL data in it!**  
**Start to format and copy files [YN]?**  
Please insert a floppy diskette into the floppy drive, and press <Y>.
- STEP 5: The system will start to format the floppy diskette and copy SATA / SATAII drivers into the floppy diskette.

Once you have the SATA / SATAII driver diskette ready, you may start to install Windows® 2000 / Windows® XP / Windows® XP 64-bit on your system directly without setting the RAID configuration on your system, or you may start to use “RAID Installation Guide” to set RAID 0 / RAID 1 / RAID 0+1 / JBOD / RAID 5 configuration before you install the OS. Before you start to configure the RAID function, you need to check the installation guide in the Support CD for proper configuration. Please find the document, “Guide to SATA Hard Disks Installation and RAID Configuration”, at the following path in the Support CD:

**.. \ Information \ Manual \ RAID Installation Guide \ English.pdf**

After making a SATA / SATAII driver diskette, you can start to install Windows® 2000 / Windows® XP / Windows® XP 64-bit OS on your system. At the beginning of Windows® setup, press F6 to install a third-party SCSI or RAID driver. When prompted, insert a floppy disk containing the ULI® RAID driver. After reading the floppy disk, the driver will be presented. Select the driver to install according to the mode you choose and the OS you install.

---

## 2.16 Using SATA / SATAII HDDs Without RAID Functions



The installation procedures for Windows Vista™ are subject to change.

If you want to install Windows® 2000, Windows® XP or Windows® XP 64-bit OS on your SATA / SATAII HDDs without RAID functions, you are allowed to choose non-RAID mode or AHCI mode. For users who plan to install Windows® 2000, Windows® XP or Windows® XP 64-bit OS on your SATA / SATAII HDDs without RAID and Hot Plug functions, please choose non-RAID mode. However, if you plan to install Windows® 2000, Windows® XP or Windows® XP 64-bit OS on your SATA / SATAII HDDs without RAID functions but still keeping Hot Plug function, please choose AHCI mode. Please follow the below procedures for selecting the mode you need.

### A. Using SATA / SATAII HDDs Operating in Non-RAID Mode

1. Enter "SATA Operation Mode" in BIOS setup to set the option from [RAID] to [non-RAID].
2. Start Windows® 2000, Windows® XP or Windows® XP 64-bit OS installation.

### B. Using SATA / SATAII HDDs Operating in AHCI Mode

1. Enter "SATA Operation Mode" in BIOS setup to set the option from [RAID] to [AHCI].
2. Start Windows® 2000, Windows® XP or Windows® XP 64-bit OS installation.

## 2.17 Untied Overclocking Technology

This motherboard supports Untied Overclocking Technology, which means during overclocking, FSB enjoys better margin due to fixed PCI / PCIE buses. Before you enable Untied Overclocking function, please enter "Overclock Mode" option of BIOS setup to set the selection from [Auto] to [CPU, PCIE, Async.]. Therefore, CPU FSB is untied during overclocking, but PCI and PCIE buses are in the fixed mode so that FSB can operate under a more stable overclocking environment.

---

## 3. BIOS SETUP UTILITY

### 3.1 Introduction

This section explains how to use the BIOS SETUP UTILITY to configure your system. The Flash Memory on the motherboard stores the BIOS SETUP UTILITY. You may run the BIOS SETUP UTILITY when you start up the computer. Please press <F2> during the Power-On-Self-Test (POST) to enter the BIOS SETUP UTILITY, otherwise, POST will continue with its test routines.

If you wish to enter the BIOS SETUP UTILITY after POST, restart the system by pressing <Ctl> + <Alt> + <Delete>, or by pressing the reset button on the system chassis. You may also restart by turning the system off and then back on.



Because the BIOS software is constantly being updated, the following BIOS setup screens and descriptions are for reference purpose only, and they may not exactly match what you see on your screen.

#### 3.1.1 BIOS Menu Bar

The top of the screen has a menu bar with the following selections:

- Main** To set up the system time/date information
- Advanced** To set up the advanced BIOS features
- H/W Monitor** To display current hardware status
- Boot** To set up the default system device to locate and load the Operating System
- Security** To set up the security features
- Exit** To exit the current screen or the BIOS SETUP UTILITY

Use <←> key or <→> key to choose among the selections on the menu bar, and then press <Enter> to get into the sub screen.

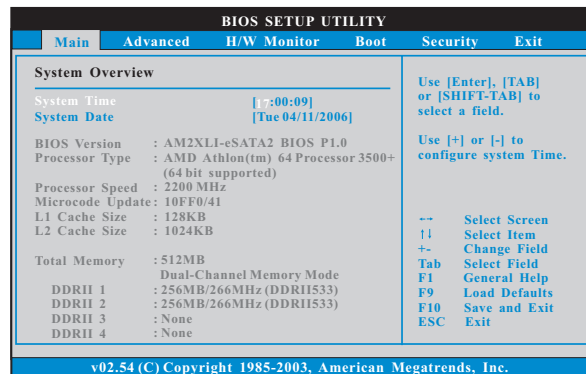
### 3.1.2 Navigation Keys

Please check the following table for the function description of each navigation key.

Navigation Key(s)	Function Description
← / →	Moves cursor left or right to select Screens
↑ / ↓	Moves cursor up or down to select items
+ / -	To change option for the selected items
<Enter>	To bring up the selected screen
<F1>	To display the General Help Screen
<F9>	To load optimal default values for all the settings
<F10>	To save changes and exit the BIOS SETUP UTILITY
<ESC>	To jump to the Exit Screen or exit the current screen

### 3.2 Main Screen

When you enter the BIOS SETUP UTILITY, the Main screen will appear and display the system overview



#### System Time [Hour:Minute:Second]

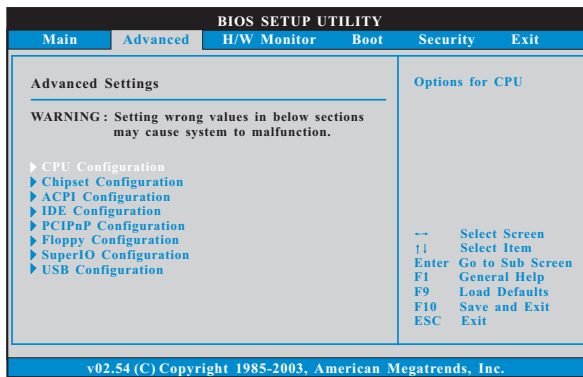
Use this item to specify the system time.

#### System Date [Day Month/Date/Year]

Use this item to specify the system date.

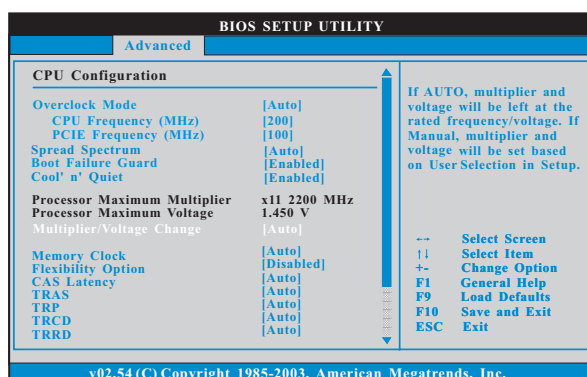
### 3.3 Advanced Screen

In this section, you may set the configurations for the following items: CPU Configuration, Chipset Configuration, ACPI Configuration, IDE Configuration, PCIPnP Configuration, Floppy Configuration, SuperIO Configuration, and USB Configuration.



Setting wrong values in this section may cause the system to malfunction.

### 3.3.1 CPU Configuration



#### Overclock Mode

Use this to select Overclock Mode. The default value is [Auto]. Configuration options: [Auto], [CPU, PCIE, Sync.] and [CPU, PCIE, Async.].

#### CPU Frequency (MHz)

Use this option to adjust CPU frequency. The default value is [200].

#### PCIE Frequency (MHz)

Use this option to adjust PCIE frequency. The default value is [100].

#### PCI Frequency (MHz)

Use this option to adjust PCI frequency. This option only appears when you set overclock mode to [CPU, PCIE, Sync.] or [CPU, PCIE, Async.]. Configuration options: [33.33], [33.80], [34.28], [34.78], [35.29], [35.82], [36.36], [36.92], [37.50] and [Sync. with CPU]. The default value is [33.33].

#### Spread Spectrum

This feature will be set to [Auto] as default.

#### Boot Failure Guard

Enable or disable the feature of Boot Failure Guard.

#### Cool 'n' Quiet

Use this item to enable or disable AMD's Cool 'n' Quiet™ technology.

#### Processor Maximum Multiplier

It will display Processor Maximum Multiplier for reference.

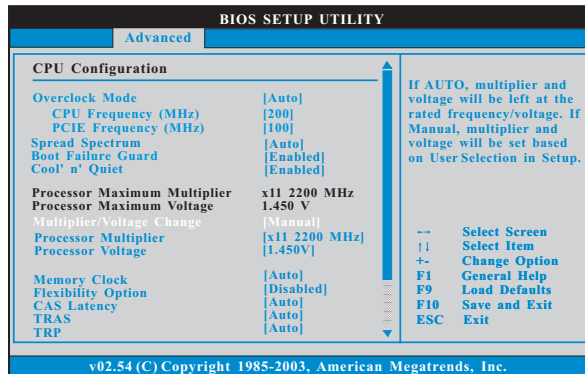
#### Processor Maximum Voltage

It will display Processor Maximum Voltage for reference.

#### Multiplier/Voltage Change

This item is set to [Auto] by default. If it is set to [Manual], you may adjust the value of Processor Multiplier and Processor Voltage. However, it is recommended to keep the default value for system stability.





### Processor Multiplier

This item will show when “Multiplier/Voltage Change” is set to [Manual]; otherwise, it will be hidden. You may set the value from [x8 1600 MHz] up to [x25 5000 MHz] but no higher than the value of “Processor Maximum Multiplier”. For example, if the value of “Processor Maximum Multiplier” is [x11 2200 MHz], the actual value of multiplier will be [x11 2200 MHz] even if you set this item to a value higher than [x11 2200 MHz]. However, for system stability, it is not recommended to adjust the value of this item.

### Processor Voltage

This item will show when “Multiplier/Voltage Change” is set to [Manual]; otherwise, it will be hidden. For safety and system stability, it is not recommended to adjust the value of this item.

### Memory Clock

This item can be set by the code using [Auto]. You can set one of the standard values as listed: [200MHz (DDRII 400)], [266MHz (DDRII 533)], [333MHz (DDRII 667)], and [400MHz (DDRII 800)].

### Flexibility Option

The default value of this option is [Disabled]. It will allow better tolerance for memory compatibility when it is set to [Enabled].

### CAS Latency

Use this item to adjust the means of memory accessing. Configuration options: [Auto], [2.0], [3.0], and [2.5].

### TRAS

Use this to adjust TRAS values. Configuration options: [Auto], [5CLK], [6CLK], [7CLK], [8CLK], [9CLK], [10CLK], [11CLK], [12CLK], [13CLK], [14CLK], and [15CLK].

### TRP

Use this to adjust TRP values. Configuration options: [Auto], [2CLK], [3CLK], [4CLK], [5CLK], and [6CLK].

### TRCD

Use this to adjust TRCD values. Configuration options: [Auto], [2CLK], [3CLK], [4CLK], [5CLK], and [6CLK].

### TRRD

Use this to adjust TRRD values. the default value is [Auto].

### TRC

Use this to adjust TRC values. The default value is [Auto].

### MA Timing

Use this to adjust values for MA timing. Configuration options: [Auto], [2T], [1T]. The default value is [Auto].

### Burst Length

Burst length can be set to 8, 4, or 2 beats.

### Bank Interleaving

Interleaving allows memory accesses to be spread out over banks on the same node, or accross nodes, decreasing access contention.

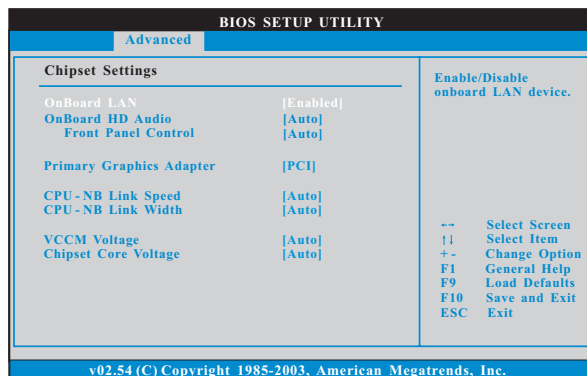
### Memory Hole

Use this to enable or disable memory hole. The default value is [Disabled].

### DDRII Initialization Mode

Configuration options: [Auto] and [Compatible]. The default value is [Auto].

## 3.3.2 Chipset Configuration



### OnBoard LAN

This allows you to enable or disable the onboard LAN feature.

### OnBoard HD Audio

Select [Auto], [Enabled] or [Disabled] for the onboard HD Audio feature. If you select [Auto], the onboard HD Audio will be disabled when PCI Sound Card is plugged.

### Front Panel Control

Select [Auto], [Enabled] or [Disabled] for the onboard HD Audio Front Panel.

---

### **Primary Graphics Adapter**

This item will switch the PCI Bus scanning order while searching for video card. It allows you to select the type of Primary VGA in case of multiple video controllers. The default value of this feature is [PCI]. Configuration options: [PCI] and [PCIe].

### **CPU - NB Link Speed**

This feature allows you selecting CPU to NB link frequency. Configuration options: [Auto], [200 MHz], [400 MHz], [600 MHz], [800 MHz], and [1000 MHz].

### **CPU - NB Link Width**

This feature allows you selecting CPU to NB link width. Configuration options: [Auto], [8 BIT], and [16 BIT].

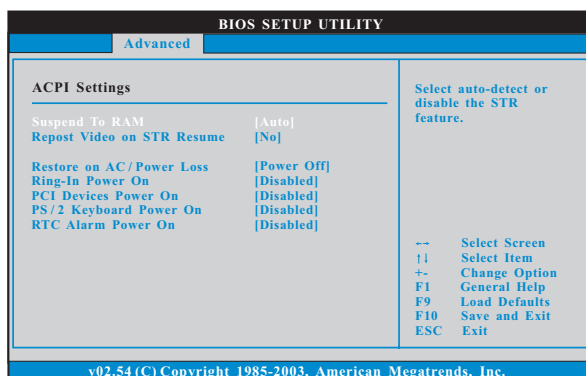
### **VCCM Voltage**

This option allows you to set VCCM. The default value is [Auto]. Configuration options: [High], [Normal], [Low], and [Auto].

### **Chipset Core Voltage**

This option allows you to set chipset core voltage. The default value is [Auto]. Configuration options: [High], [Middle], [Low], and [Auto].

### 3.3.3 ACPI Configuration



#### Suspend to RAM

Use this item to select whether to auto-detect or disable the Suspend-to-RAM feature. Select [Auto] will enable this feature if the OS supports it. If you set this item to [Disabled], the function "Repost Video on STR Resume" will be hidden.

#### Repost Video on STR Resume

This feature allows you to repost video on STR resume.(STR refers to suspend to RAM.)

#### Restore on AC/Power Loss

This allows you to set the power state after an unexpected AC/power loss. If [Power Off] is selected, the AC/power remains off when the power recovers. If [Power On] is selected, the AC/power resumes and the system starts to boot up when the power recovers.

#### Ring-In Power On

Use this item to enable or disable Ring-In signals to turn on the system from the power-soft-off mode.

#### PCI Devices Power On

Use this item to enable or disable PCI devices to turn on the system from the power-soft-off mode.

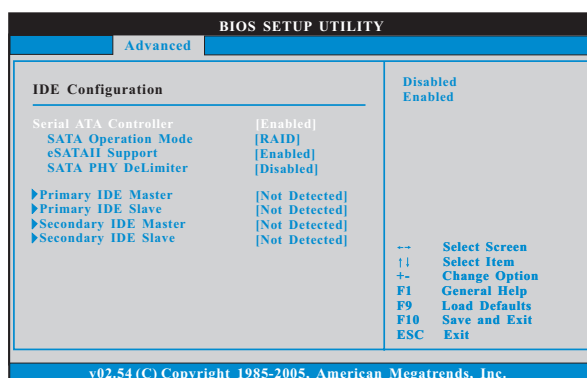
#### PS/2 Keyboard Power On

Use this item to enable or disable PS/2 keyboard to turn on the system from the power-soft-off mode.

#### RTC Alarm Power On

Use this item to enable or disable RTC (Real Time Clock) to power on the system.

### 3.3.4 IDE Configuration



#### Serial ATA Controller

Enable the SATA controller by selecting [Enabled]. The default value of this option is [Enabled]. Configuration options: [Enabled] and [Disabled].

#### SATA Operation Mode

Use this item to adjust SATA Operation Mode. The default value of this option is [RAID]. Configuration options: [RAID], [non-RAID] and [AHCI].

#### eSATAII Support

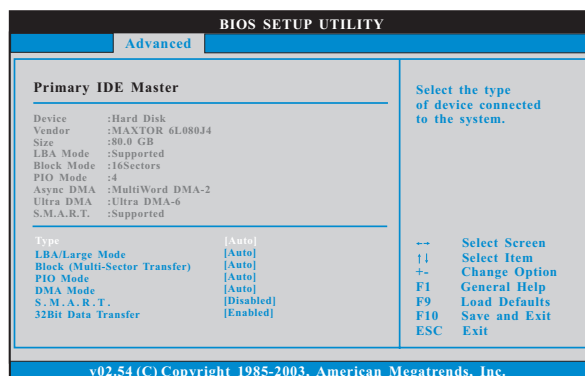
Use this item to enable or disable eSATAII support. The default value of this option is [Enabled]. Configuration options: [Enabled], [Disabled].

#### SATA PHY DeLimiter

Configuration options: [Auto], [Enabled], and [Disabled]. The default value is [Disabled].

#### IDE Device Configuration

You may set the IDE configuration for the device that you specify. We will use the "Primary IDE Master" as the example in the following instruction, which can be applied to the configurations of "Primary IDE Slave", "Secondary IDE Master", and "Secondary IDE Slave" as well.



## TYPE

Use this item to configure the type of the IDE device that you specify. Configuration options: [Not Installed], [Auto], [CD/DVD], and [ARMD].

**[Not Installed]:** Select [Not Installed] to disable the use of IDE device.

**[Auto]:** Select [Auto] to automatically detect the hard disk drive.



After selecting the hard disk information into BIOS, use a disk utility, such as FDISK, to partition and format the new IDE hard disk drives. This is necessary so that you can write or read data from the hard disk. Make sure to set the partition of the Primary IDE hard disk drives to active.

**[CD/DVD]:** This is used for IDE CD/DVD drives.

**[ARMD]:** This is used for IDE ARMD (ATAPI Removable Media Device), such as MO.

## LBA/Large Mode

Use this item to select the LBA/Large mode for a hard disk > 512 MB under DOS and Windows; for Netware and UNIX user, select [Disabled] to disable the LBA/Large mode.

## Block (Multi-Sector Transfer)

The default value of this item is [Auto]. If this feature is enabled, it will enhance hard disk performance by reading or writing more data during each transfer.

## PIO Mode

Use this item to set the PIO mode to enhance hard disk performance by optimizing the hard disk timing.

## DMA Mode

DMA capability allows the improved transfer-speed and data-integrity for compatible IDE devices.

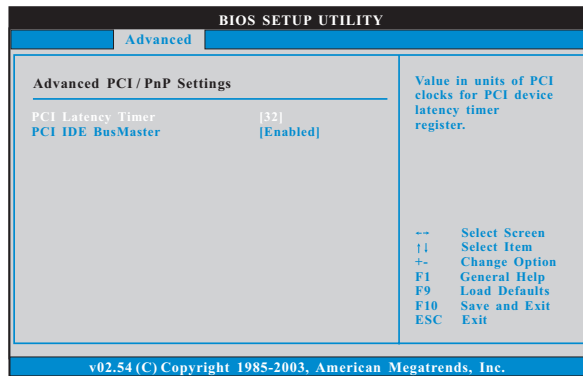
### S.M.A.R.T.

Use this item to enable or disable the S.M.A.R.T. (Self-Monitoring, Analysis, and Reporting Technology) feature. Configuration options: [Disabled], [Auto], [Enabled].

### 32-Bit Data Transfer

Use this item to enable 32-bit access to maximize the IDE hard disk data transfer rate.

## 3.3.5 PCIPnP Configuration



Setting wrong values in this section may cause the system to malfunction.

### PCI Latency Timer

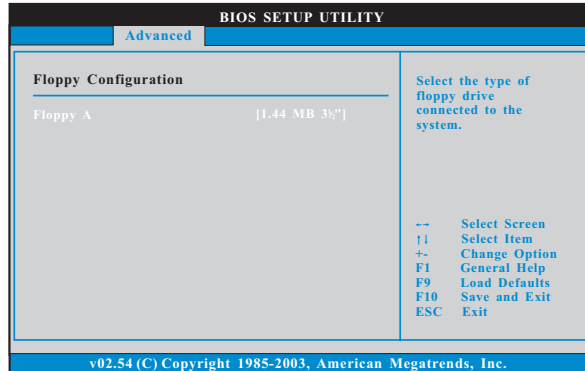
The default value is 32. It is recommended to keep the default value unless the installed PCI expansion cards' specifications require other settings.

### PCI IDE BusMaster

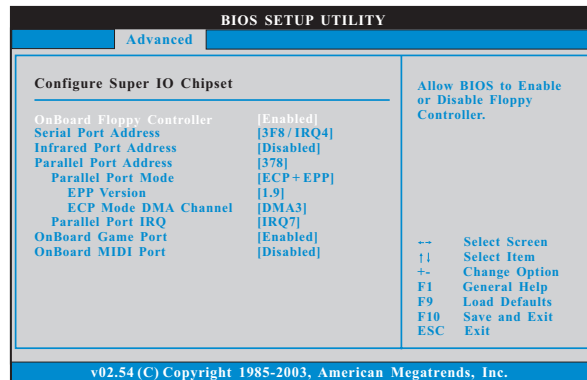
Use this item to enable or disable the PCI IDE BusMaster feature.

### 3.3.6 Floppy Configuration

In this section, you may configure the type of your floppy drive.



### 3.3.7 Super IO Configuration



#### OnBoard Floppy Controller

Use this item to enable or disable floppy drive controller.

#### Serial Port Address

Use this item to set the address for the onboard serial port or disable it.

Configuration options: [Disabled], [3F8 / IRQ4], [2F8 / IRQ3], [3E8 / IRQ4], [2E8 / IRQ3].

#### Infrared Port Address

Use this item to set the address for the onboard infrared port or disable it.

Configuration options: [Disabled], [2F8 / IRQ3], and [2E8 / IRQ3].



### Parallel Port Address

Use this item to set the address for the onboard parallel port or disable it. Configuration options: [Disabled], [378], and [278].

### Parallel Port Mode

Use this item to set the operation mode of the parallel port. The default value is [ECP+EPP]. If this option is set to [ECP+EPP], it will show the EPP version in the following item, "EPP Version". Configuration options: [Normal], [Bi-Directional], and [ECP+EPP].

### EPP Version

Use this item to set the EPP version. Configuration options: [1.9] and [1.7].

### ECP Mode DMA Channel

Use this item to set the ECP mode DMA channel. Configuration options: [DMA0], [DMA1], and [DMA3].

### Parallel Port IRQ

Use this item to set the IRQ for the parallel port. Configuration options: [IRQ5] and [IRQ7].

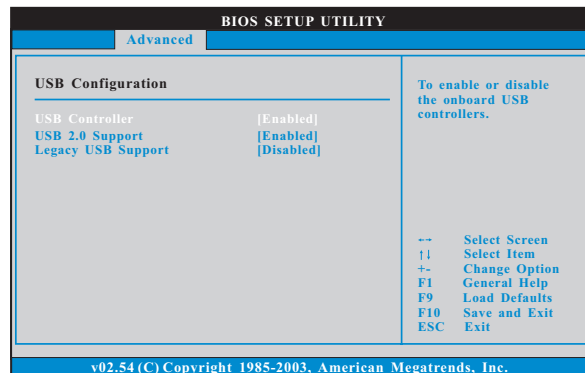
### OnBoard Game Port

Use this item to enable the Game Port or disable it.

### OnBoard MIDI Port

Use this item to select the address for the MIDI Port or disable it. Configuration options: [Disabled], [300], and [330].

## 3.3.8 USB Configuration



### USB Controller

Use this item to enable or disable the use of USB controller.

### USB 2.0 Support

Use this item to enable or disable the USB 2.0 support.

### Legacy USB Support

Use this item to enable or disable the support to emulate legacy I/O devices such as mouse, keyboard,... etc. Or you may select [Auto] so that the system will start to auto-detect; if there is no USB device connected, "Auto" option will disable the legacy USB support.

## 3.4 Hardware Health Event Monitoring Screen

In this section, it allows you to monitor the status of the hardware on your system, including the parameters of the CPU temperature, motherboard temperature, CPU fan speed, chassis fan speed, and the critical voltage.

BIOS SETUP UTILITY					
Main	Advanced	H/W Monitor	Boot	Security	Exit
<b>Hardware Health Event Monitoring</b>					
CPU Temperature	:	37°C / 98°F			
M/B Temperature	:	31°C / 87°F			
CPU Fan Speed	:	2833 RPM			
Chassis Fan Speed	:	N/A			
Vcore	:	1.532 V			
+ 3.30V	:	3.129 V			
+ 5.00V	:	4.877 V			
+ 12.00V	:	11.741 V			
CPU Quiet Fan	:	[Disabled]			
			-->	Select Screen	
			F1	Select Item	
			F1	General Help	
			F9	Load Defaults	
			F10	Save and Exit	
			ESC	Exit	

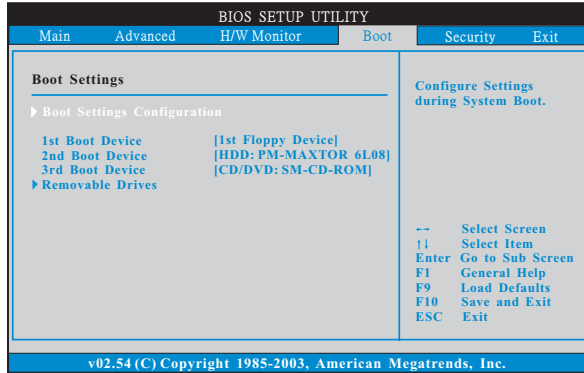
v02.54 (C) Copyright 1985-2003, American Megatrends, Inc.

### CPU Quiet Fan

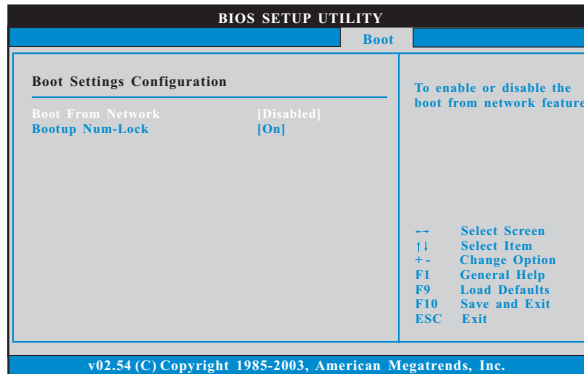
This item allows you to identify the temperature of CPU fan. Configuration options: [Disabled] and [Enabled]. The default value is [Disabled].

### 3.5 Boot Screen

In this section, it will display the available devices on your system for you to configure the boot settings and the boot priority.



#### 3.5.1 Boot Settings Configuration



##### Boot From Network

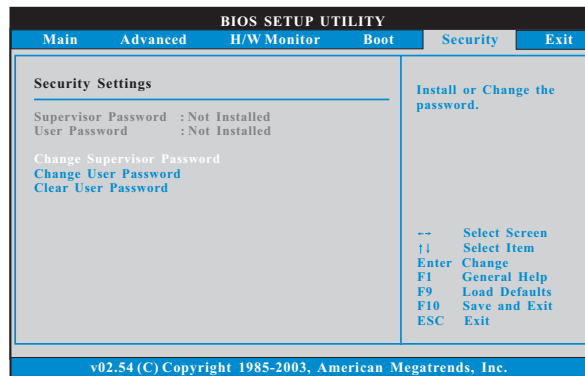
Use this item to enable or disable the Boot From Network feature.

##### Boot Up Num-Lock

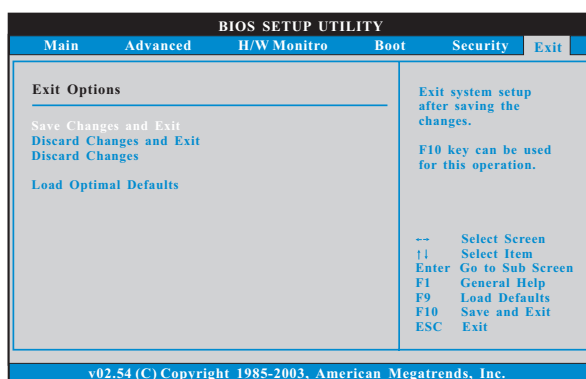
If this item is set to [On], it will automatically activate the Numeric Lock function after boot-up.

### 3.6 Security Screen

In this section, you may set or change the supervisor/user password for the system. For the user password, you may also clear it.



### 3.7 Exit Screen



#### Save Changes and Exit

When you select this option, it will pop-out the following message, “Save configuration changes and exit setup?” Select [OK] to save the changes and exit the BIOS SETUP UTILITY.

#### Discard Changes and Exit

When you select this option, it will pop-out the following message, “Discard changes and exit setup?” Select [OK] to exit the BIOS SETUP UTILITY without saving any changes.

#### Discard Changes

When you select this option, it will pop-out the following message, “Discard changes?” Select [OK] to discard all changes.

#### Load Optimal Defaults

When you select this option, it will pop-out the following message, “Load optimal defaults?” Select [OK] to load the default values for all the setup configurations.

---

## **4. Software Support**

### **4.1 Install Operating System**

This motherboard supports various Microsoft® Windows® operating systems: 2000 / XP / XP 64-bit / Vista™. Because motherboard settings and hardware options vary, use the setup procedures in this chapter for general reference only. Refer to your OS documentation for more information.

### **4.2 Support CD Information**

The Support CD that came with the motherboard contains necessary drivers and useful utilities that enhance the motherboard features.

#### **4.2.1 Running The Support CD**

To begin using the support CD, insert the CD into your CD-ROM drive. The CD automatically displays the Main Menu if "AUTORUN" is enabled in your computer. If the Main Menu did not appear automatically, locate and double click on the file "ASSETUP.EXE" from the BIN folder in the Support CD to display the menus.

#### **4.2.2 Drivers Menu**

The Drivers Menu shows the available devices drivers including ASRock Express GbL PCI Express LAN card driver if the system detects the installed devices. Please install the necessary drivers to activate the devices.

#### **4.2.3 Utilities Menu**

The Utilities Menu shows the applications software that the motherboard supports. Click on a specific item then follow the installation wizard to install it.

#### **4.2.4 Contact Information**

If you need to contact ASRock or want to know more about ASRock, welcome to visit ASRock's website at <http://www.asrock.com>; or you may contact your dealer for further information.

---

## **APPENDIX:**

### **AMD's Cool 'n' Quiet™ Technology**

For power-saving sake, it is strongly recommended to enable AMD's Cool 'n' Quiet™ technology under Windows® system. When using this feature, please make sure to install "AMD Processor Driver" from the "Support CD" first.

If you are using Windows® 2000/XP operating system, please follow the instruction below to enable AMD's Cool 'n' Quiet™ technology:

1. From the Windows® 2000/XP operating system, click the Start button. Select Settings, then Control Panel.
2. Switch to Classic View. (for Windows® XP only)
3. Double-click the Display icon in the Control Panel then select the Screen Saver tab.
4. Click the "Power..." button. The following dialog box appears.
5. From the Power schemes combo list box, select **Minimal Power Management**.
6. Click OK to implement settings.